

OPENING TIMES

NOVEMBER / DECEMBER 2025

FREE



**INSIDE: WIN PRIZES ON THE WINTER
WARMER WANDER / HOMEBREW
COMPETITION / PUB WALK
AND MUCH MORE...**



AFFORDABLE ALES, ALL YEAR LONG

WATERHOUSE

67-71 Princess Street
M2 4EG
0161 200 5380

MOON UNDER WATER

68-74 Deansgate
M3 2FN
0161 834 5882

THE SEVEN STARS

6-8 Dantzic Street
M4 2BS
0161 817 2980

THE PARAMOUNT

33-35 Oxford Street
M1 4BH
0161 223 1820

PICCADILLY

49 Piccadilly
M1 2AP
0161 236 9206

WETHERSPOON MANCHESTER

THE GATEWAY

882 Wilmslow Road
East Didsbury
0161 438 1700

FORD MADDOX

Wilmslow Rd
M13 9NG
0161 256 6660

GREAT CENTRAL

306 Wilmslow Road
Fallowfield
0161 248 1740



- USE ALE FINDER ON THE JDW APP TO SEARCH THE AREA FOR YOUR FAVOURITE ALE,
OR SEARCH FOR NEW ONES - 



FIFTEEN YEARS OVER 3,000 BEERS!



In this issue...

Pubs of the Month.....	5	What's Brewing.....	13
Heard at the Bar.....	7	Scribbles on a Beermat.....	15
More Heard at the Bar.....	9	Stockport's Lost Pubs.....	15
Rail Ale Trail.....	9	Homebrew Competition.....	16
CAMRA Awards.....	10	Pub Walks.....	17
Winter Warmer Wander.....	10	Events and Contacts.....	19
Winter Warmer Wander.....	11		

About Opening Times & Contacts

Opening Times is produced by the Stockport & South Manchester Branch of CAMRA, the Campaign for Real Ale. Additional material is supplied by the High Peak, Tameside & North East Cheshire Branch, Central Manchester Branch and the Macclesfield & East Cheshire Branch.

It is printed by Paper Red Media and distributed throughout Stockport, Tameside, South Manchester and East Manchester. There are also numerous outlets in Macclesfield & East Cheshire, Manchester City Centre, High Peak and Glossop. Online copies are available at: ssm.camra.org.uk/magazine

News, articles and letters are welcome to the editorial address – John Clarke, 45 Bulkeley Street, Edgeley, Stockport, SK3 9HD. Email – stocam@btinternet.com. Phone 0775 383 6898. Advertising rates on request or online at: ssm.camra.org.uk/viewnode.php?id=192265. Local advertising John Clarke (as above) or contact Neil Richards MBE at n.richards@btinternet.com

Subscriptions

Available at £11.50 for one year (make cheques payable to Stockport & South Manchester CAMRA). Apply to Lawrence Devaney, 2 Kingsway, Bramhall, Stockport, SK7 3BG.

Copyright & Disclaimer

All content is copyright of CAMRA. Views expressed in this magazine are those of the individual authors and not necessarily supported by the editor or CAMRA. Please contact the editorial address if you wish to reproduce anything in *Opening Times*. We aim to ensure that the information in *Opening Times* is correct at the time of going to press. If we get something wrong then please get in touch and we'll print a correction.

Pub Opening Hours

We hope you will visit all of the pubs mentioned in *Opening Times*. There isn't the space to print all of their opening hours – however these can be checked on CAMRA's online pub guide: camra.org.uk/pubs

Front Cover

Merry Christmas to all of our readers and advertisers! Don't forget to take part in our Winter Warmer Wander, sponsored by Robinsons Old Tom. Picture by Lawrence Devaney.

Contributors

John Clarke, Alan Gent, Dave Hanson, Peter Butler, Paul Felton, Dave Burston, Steve Davis, Chris Morris, Lawrence Devaney, Neil Worthington, Sue Lightfoot, Carl Burkitt, Dave Stearn, Chris Walkden, Martin Burgess, Pete Farrand, Jack Lyons, Ben Zwierink, Steve Ingham, Colin Phillips, Jim Flynn.

Distribution Manager – Janet Flynn

Copy date for the January/February issue is Friday 5 December

Welcome

There's plenty for you to get involved with in this issue of *Opening Times*!

On the centre pages, you'll find details of this year's **Winter Warmer Wander**, which celebrates the styles of beer which go down so well at this time of year, especially in the run-up to the festive season.

There are lots of prizes to be won, and it's the chance to visit a few pubs which might not be among your local haunts. And of course, there will be lots of great festive beers waiting for you.

Once again, the Winter Warmer Wander has been sponsored by Robinsons Old Tom, one of the classic barley wines. Our thanks go to Robinsons for their continued support.

Homebrewing is increasingly popular, and once again we are running a **Homebrew Competition** to find five beers for next year's Stockport Beer & Cider Festival. This will be the ninth competition we have run, and over the years it's become more and more popular. So, if you are a homebrewer, either a novice or an expert (and anything in between), please do enter. You'll get plenty of useful and constructive feedback from the judges. Full details are on page 16.

Finally, check out part one of the **Crewe to Manchester Ale Trail**. This is a great opportunity to support a rural rail line and enjoy fine pubs and beer while you do so. There are more details and a link to the website on page 9.

With the festive season almost upon us, thoughts turn to Christmas stocking fillers – and what better than CAMRA's *Good Beer Guide*? The 2026 edition is now available and you can get a copy from Jim Flynn, 66 Downham Road, Heaton Chapel, SK4 5EG for just £16.99. You can pay by cheque (made out to CAMRA Stockport & South Manchester), BACS using sort code 16-34-27, account number 11363511 or via the advert below.

All that remains now is for me to wish all our readers, contributors and advertisers a very Merry Christmas and a Happy New Year!

John Clarke, Editor

The UK's No. 1 beer and pub guide



Recognise the best, with the CAMRA Good Beer Guide 2026. The definitive beer drinker's guide for those seeking the best pints in the nation's pubs.

Order your copy now at shop1.camra.org.uk



ORDER NOW

A FAMILY BUSINESS

STEPHENSONS

Supporting The Catering Trade Since 1868

WHILE STOCKS LAST



PROUD SPONSORS OF
PUB OF THE MONTH

Guinness Branded Tulip Pint Glass

VISIT THE NORTH'S LARGEST CATERING
CASH & CARRY

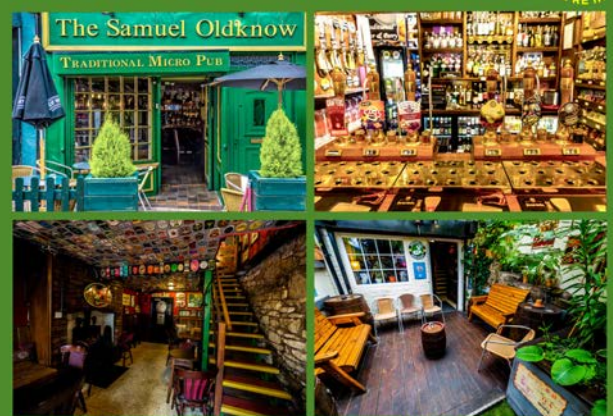
tableware • catering equipment • disposables

   stephensons.com
161 Buxton Road, Stockport, Cheshire, SK2 6EQ.

THE SAMUEL OLDKNOW

BEERS WINES & SPIRITS

GOOD BEER GUIDE *2025* WE'RE IN IT!



Opening Times: Monday - Thursday 1-11 Friday - Sunday 12-11

**Six Real Ales, Craft Beer & Lager
Traditional Cider, Wine & Spirits**

22 Market Street, Marple
0161 425 9530 - samueloldknow.co.uk

The Petersgate Tap
19a St Petersgate
Stockport
SK1 1EB

The Crown Inn
154 Heaton Lane
Stockport
SK4 1AR



Two very different pubs, 14 cask ales, 14 real ciders, 15 keg lines.
One award-winning team!!

Good Beer Guide, 2018, 2019, 2020 - 2025, 2026
Stockport Cider Pub of the Year
2018, 2019, 2020-2025

Originally a brewery in 1823
Beer Garden (with awesome views)
Real Fires (in Winter)

Pubs of the Month

Stockport & South Manchester Winners for November and December



The Pub of the Month for November is the Angel Inn on Stockport Market Place. Jack Lyons has been along to a pub with a surprisingly ancient history.

The Angel occupies one of the oldest buildings in Stockport, dating from the 16th century and with interior timbers dating from the 15th century. The unusual exterior stucco was added in Victorian times. When Robinsons took over the old Bell & Co. brewery in 1949, they inherited a swathe of pubs in Stockport town centre. The Angel was among them, and when it closed two years later, that was likely to be the end of its life as a pub. Selling it on as a free house was out of the question back then.

For the following 67 years, the building was home to a variety of businesses, none of them a bar.

Since reopening in 2018, the Angel has been managed by Hannah Learoyd and Craig Johnson, along with barman Duncan, who are passionate about cask ale. The Angel was also one of the original backers of Foodie Friday, which has increased in popularity.

Little remains of the original pub interior, which has a bar to the left and is nicely broken up into different areas. A snug at the back left is particularly welcoming. At the back is a large, partly covered outdoor area, which has been put to good use and is a real asset to the pub.

The well-appointed bar offers up to six changing cask beers front and centre as you enter. There are three handpumps either side of a pillar, with a regular dark cask beer and one handpump sometimes given over to traditional cider. The Angel endeavours to source local beers but also some from further afield – beers from Farm Yard and Tiny Rebel make regular appearances. There is also an impressive range of German beers on tap and in bottle. Well-chosen Belgian specialities complete the picture.

It's not the first time the Angel has been awarded Pub of the Month, but this further award is well overdue. Join us on the night of Thursday, 27 November, when we present this well-deserved award. Being in the centre of Stockport, the Angel is well-served with public transport.



December's Pub of the Month award-winner is the Horse & Farrier in the centre of Gatley. Peter Butler and Sue Lightfoot tell you all about it.

Dating from before 1910, the Horse & Farrier, with its impressive mock Tudor frontage, is a focal point in Gatley village, opposite the clock, which was the original First World War memorial.

The present building, refurbished in 2016, and again in 2021, is made from two, or possibly three, old cottages, and has a covered entrance with a mosaic floor leading to a multi-roomed traditional pub with food service. A central bar serves all six of the separate rooms and a small area upstairs is available for functions.

To the right of the entrance is a quiet room with a traditional air to it, and a real fire; a couple of cosy seats sit under the stairs. To the left is a little snug, again with a real fire, and beyond that there are two lounges, again with real fires.

An open lounge with Sports TV is to the right of the bar, and beyond that there's a drinkers' area with dartboard. A garden to enjoy, and a wide choice of snacks and meals, make this pub popular with all ages – accompanied children are welcome (except in the Sports area) until 8pm. Four-legged friends are not forgotten either. Live music entertains at weekends, and various events are hosted here, including the popular Party in the Car Park and the occasional Psychic Event (see Facebook and Instagram for updates).

Two changing and five regular cask beers from Hydes are usually available, alongside a good selection of other beers, wines and spirits. Manager Liz Bennett-Greaves oversees all of this with a consummate professionalism that comes from long experience in the licensed trade.

The presentation will be on Tuesday 30 December, from 8pm. Do try and join us. The Horse & Farrier is close to bus routes 11, 370 and 371, and Gatley railway station is 300 metres away.

The Pub of the Month award is sponsored by Stephenson's, a local family firm that has been supplying the local pub and catering trade for over 150 years. Check out their advert on the previous page.





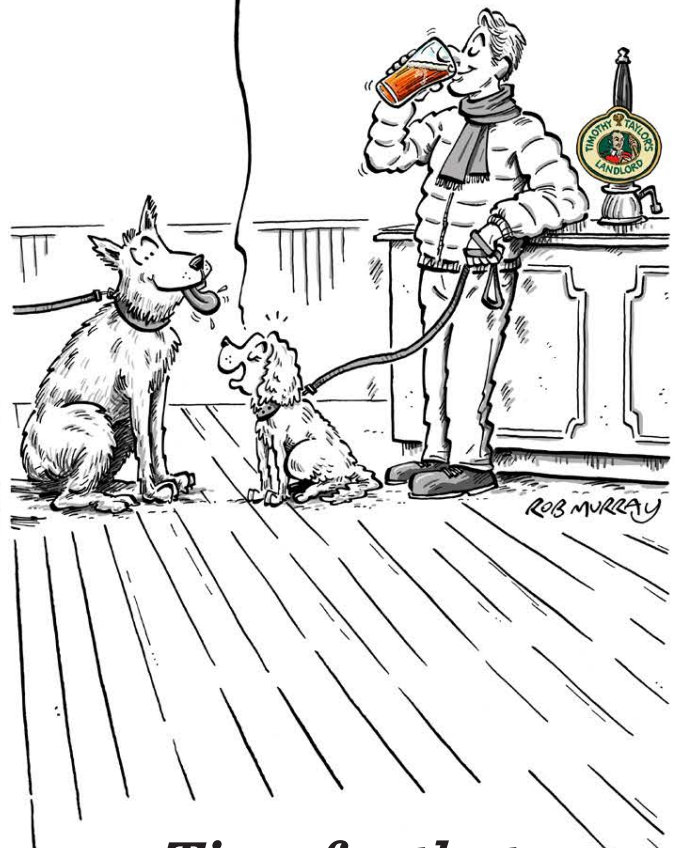
TAP ROOM NOW OPEN



**THE BOLLINGTON
BREWING CO.**
BREWING PASSION

**BROOK MILL
MACCLESFIELD, SK11 7BQ**

I always walk him here
for a pint of his
favourite...



*Time for that
taste of Taylor's*



Heard at the Bar

Pub News from Stockport, Manchester, Tameside and beyond

The Spinners Rest



Since the note in last month's *Opening Times*, the pub formerly known to many as the **Shamrock**, on Bengal Street in Ancoats, is to reopen but under its new name of the **Spinners Rest**. The new name was chosen after a competition opened to customers by Joseph Holt, the new owners of the site.

The name was selected in recognition of the cotton workers who once worked in their thousands in the area. The venue will open in the New Year after a sensitive refurbishment representing an investment by the owners of £1.8million. The hallmark of Holt's refurbishments is one of sensitive treatment, so we can look forward to a welcoming and much improved space.

Denis Maddocks, Holt's estates manager, said the extensive top-to-bottom refurbishment will preserve the building's historic charm, especially as it sits within a designated conservation area. It also includes an expansion of the site – which boasts one of the few beer gardens in the neighbourhood.

Long-Closed Pub Reopens



On 26 September, the **Bird in Hand** at Knolls Green in Moberley reopened after being closed since September 2019. The new licensee Hugh Topham is planning to introduce food, but there have been some delays in getting the kitchen ready, hopefully resolved by the time you read this.

The 18th century pub is worth visiting for the magnificent interior alone, which is divided into four rooms with many original 1930s fittings. Although there is no toilet for the disabled, it is all on one level with the exception of the upper restaurant area. If the weather is good, there are picnic-style tables in front of the pub and a few in an enclosed yard to the side of it.

There is a car park to the rear and the side. However, you can go by bus, on any day except Sunday, as the 88 Altrincham-Wilmslow-Knutsford bus passes the door with the stop close by.

More City Centre News

Former *Good Beer Guide*-listed pub, the **Rising Sun** on Queen Street, has reopened after a short refurbishment. It's now managed by Unity Social Pub Group, which runs a small number of community pubs. Initial concerns that real ale would no longer be available have been assuaged as there are two handpumps on the bar. One cask ale was available when we visited and a second one was promised for the following week.

There's a new pub on Deansgate. The **Bear**, which is on the junction of Peter Street and describes itself as a "Victorian pub, dance rooms and events space", ironically occupies the former headquarters of Manchester Temperance Union.

It had only been open a very short time when *Opening Times* called, but it was already attracting a good trade. It has to be said, it's been converted very well and is an extremely attractive space.



There are three handpumps on the bar but only two were in use when we called, dispensing beers from the Carlsberg Britvic stable – Wainwright Gold and Hobboblin IPA.

The **Brunswick** on Piccadilly has reopened after a lengthy refurbishment. We understand that two cask ales are available – Timothy Taylor's Landlord and Carlsberg Britvic's Wychwood Hobboblin.

Two Under Threat



There's a very active campaign to save the **Apsley Cottage** in Ardwick. Nestled next to the O2 Apollo, the pub is a surprisingly old building, dating back to the 1830s. It's also the only pub left in Ardwick.

The pub has been, or is in the process of being, sold by owners Admiral Taverns, who have come out with the usual expressions of regret. The locals aren't taking this lying down and the Manchester Civic Society has become involved. Applications are under way to not only get the pub listed as an asset of community value but also to get a formal statutory listing. While it's not sold cask beer for years, CAMRA has nevertheless lent its strong moral support to save what is an iconic pub.

Also under threat, this time because it's apparently in an advanced state of disrepair, is the **Crescent** on the Crescent in Salford. This was once a famous and thriving free house but it's been closed for years. It's also been falling apart. This, however, is a listed building and now Salford City Council has served the owner with an enforcement notice to repair it.

Duke, Buxton



After a four-year closure, the **Duke** in the Burbage district of Buxton reopened on 3 October. A £240,000 joint investment has been made by Heineken-owned Star Pubs and new licensee

Rebecca Higgins, together with husband Dan.

Refurbishment work includes repainting the exterior, updating the outdoor seating area, and refitting the interior with new seating, timber flooring and a stripped wooden bar. The kitchen has been replaced to allow the pub to broaden its food offer, which will be available seven days a week, lunchtime and in the evening. Three cask ales on handpump are available.



CASK, KEG & BOTTLES
BREWED IN WREXHAM

MAGICDRAGONBREWING.COM
ORDER: 01978 781 675



LADYBARN

SOCIAL CLUB
EST. 1997

A CAMRA multi-award winning Social Club in South Manchester with a commitment to quality cask ales, both regular and guest beers from local breweries.

Most recently CAMRA Stockport and South Manchester Club of the Year 2025.



We're in the Good Beer Guide 2026!

Ladybarn Social Club @Ladybarn_Social_Club



The Silly Country

Bar & Bottle Shop



Ever rotating selection of cask beer, real cider and bottles / cans.



Featured in the Good Pub Guide Since 2018!

121 Market Street, Droylsden, Manchester M43 7AR
(Next to Droylsden tram stop)

More Heard at the Bar

Pub News from Stockport, Manchester, Tameside and beyond

Ale on the Rails

A new rail-based ale trail has been introduced in the *Opening Times* area as part of the Railway 200 celebrations, writes *Chris Walkden*. Launched on the exact date (27 September) that 200 years ago saw the Stockton and Darlington Railway first carry passengers, the trail involves visiting pubs in towns and villages from Handforth and Styal along the line to Crewe.



There are 21 pubs involved. Ale-trailers must visit 15 different pubs, including one near each of the nine rail station stops on the line, and obtain a sticker from each one. They then qualify for a uniquely branded baseball cap.

The trail has no end date, so there is no rush to complete it. This means that there is plenty of time to visit other attractions in the towns and villages on the route as part of several days out.

Organised by the Crewe to Manchester Rail Partnership, the trail was the brainchild of the Friends of Handforth Station who coordinated the project. 'Friends' of the other stations on the line have recruited pubs in their locations, and sponsorship has come from the Rail Partnership, Discover Crewe, and the Cheshire Pub Company.

Meanwhile, the Macclesfield & East Cheshire, South Cheshire and Stockport & South Manchester CAMRA Branches have all been involved, providing advice on pubs and ale trail organisation.

The way it works will sound very familiar to OT readers. Participants will visit pubs on the trail and purchase at least half a pint of real ale and show their valid train ticket to be given a sticker. This can then be attached to a sticker card, downloadable from the website, although pubs will also have a limited number of cards available. Completed cards are then submitted to claim your prize.

Most of the pubs on the trail are in the Macclesfield and East Cheshire Branch area and their secretary, Pete Farrand, has been involved from the start. He said: "We were delighted to be invited to assist in the organisation of this Ale Trail, as it takes in our core mission to campaign for pubs, live ales, and the people involved with them." Full details of the Ale Trail can be found at the Crewe to Manchester Community Rail Partnership webpage:

www.crewe2manchesterrail.org.uk/days-out/rail-ale-trail-1/

Please support this venture, because if this trail is a success, it is hoped to organise other ale trails involving stations from Handforth and Styal into Manchester. We will keep you advised.

News in Brief

Congratulations are again due to the **Ladybarn Social Club** on Green Street in Ladybarn. After winning the Stockport & South Manchester CAMRA Club of the Year Award, it went forward to the Greater Manchester competition. This was won by the **Dobcross Band Club**, but the Ladybarn Club was a very worthy runner-up. Club secretary Phil Cowtan is seen here with his certificate.

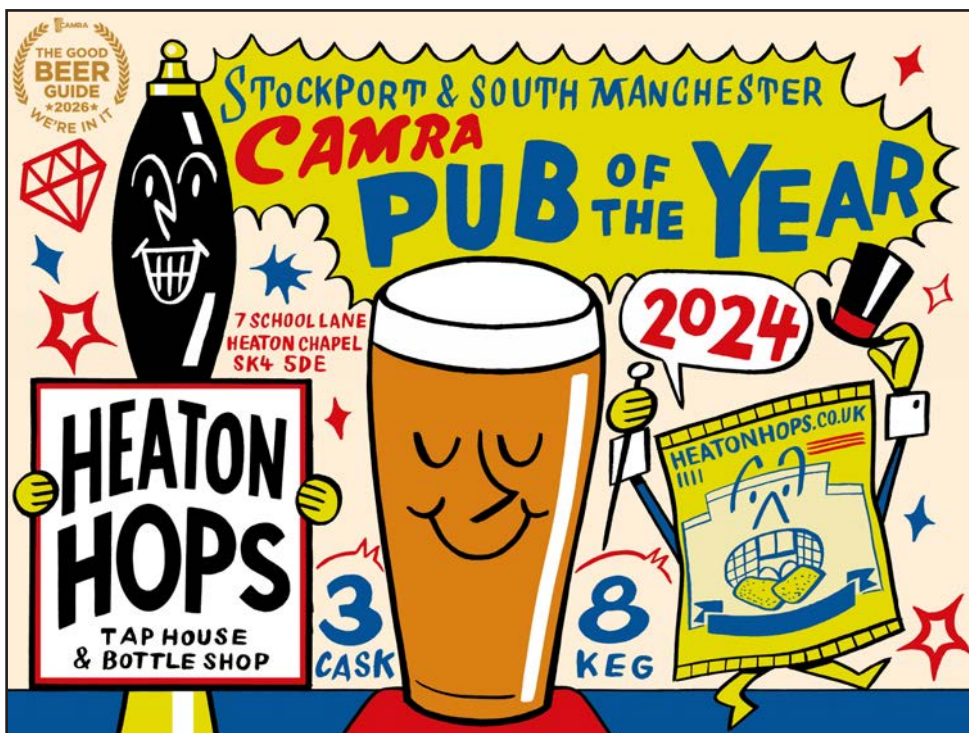


In South Reddish, the **Carousel** has also undergone a major refit. It looks very smart but cask ale has been a casualty, with the handpumps removed. A similar fate has befallen the handpumps in the **George & Dragon** in Cheadle which also no longer sells cask beer.

On 30 September, **Ye Olde Vic** in Edgeley celebrated ten years as a community-owned pub. Having been saved from almost certain closure, the Olde Vic has gone from strength to strength. Licensee Steve Brannan has remained at the helm throughout, and is ably supported by a team of shareholder volunteers, some of whom are shown in this photo taken on the night.



The **Dane Bank** in, naturally, Dane Bank, was closed for an extensive refurbishment as we went to press. This Robinsons house should be open again by the time you read this. Eagerly awaited also is the reopening of the **Station House** in Cheadle Hulme. This Holt's pub, previously called P5, is undergoing what appears to be a radical transformation. Hopefully more on this next time.



CAMRA Awards

Recent Presentations



The first of the awards from Stockport Beer & Cider Festival has been presented. This was the overall Beer of the Festival award for Grendel, an imperial porter brewed by **Torrside** in New Mills. This was a stronger version of a beer by homebrewer Jon Britton, which won its category in the festival's homebrew contest. Torrside's Chris Clough and Sarah Rothko-Wright are seen here with their certificate.



As we reported in the July/August issue, Stockport's **Petersgate Tap** has won two major cider awards. It was judged Cider Pub of the Year for both CAMRA's Greater Manchester area and also the North West region, where it saw off challenges from the Cider Pubs of the Year from Lancashire, Cumbria and the Isle of Man. The Greater Manchester award has yet to be presented, but that for the North West was presented in early September. Pictured here are Petersgate Tap owners Chris and Alan Gent with their certificate.



The Stockport & South Manchester CAMRA Pub of the Month for August was the **Midland** on Wellington Road North, Stockport. Having survived a demolition threat in 2016, the Midland remains a well-run community pub with a large clientele of loyal regulars.

Up to four cask beers are sold, with the range tending to comprise more traditional bitters, with beers from the Wincle brewery often featuring. Landlord Mark Hayter is shown here with his certificate.



The September Pub of the Month was the **Victoria** on Wilmslow Road in Withington. A pub is more than just its structure and décor; its excellence is measured by the quality of its fare and the warmth of the welcome. Under the guidance of its longstanding licensees, Alyson and Paul Mitchell (pictured here with their certificate), the Victoria scores extremely highly on all of these points, and the pub

is a regular in the *Good Beer Guide*.

Winter Warmer Wander 2025

In November and December we are once again running the Winter Warmer Wander, our annual celebration of festive beers to bring you a little winter cheer across the Christmas period.



Just like Mild Magic, this is a chance for you to visit some new pubs and try some new beers. We have lots of great prizes – and different ways to win them.

When selecting your beers, please remember that the reasoning behind the Winter Warmer Wander is to promote particular beer styles – stout, porter, old ale and barley

wine (all of any alcoholic strength), and 'Christmas' or 'seasonal' ales of 4.4% ABV or above, brought out specially for the winter season, such as Winter Nights (Robinsons), Plum Pudding (JW Lees) or Sixx (Holts).

Many thanks to the 65 pubs who have signed up to take part, and a special mention goes to Robinsons brewery, and Old Tom in particular, for sponsoring this year's Winter Warmer Wander.

What you need to do:

- Buy a half or a pint of CASK-CONDITIONED stout, porter, old ale or barley wine (all can be any ABV) or a Christmas/seasonal special (of 4.4% ABV or above).
- Ask the pub for a sticker to put on your WWW entry sheet opposite (additional sheets can be downloaded from ssm.camra.org.uk). If for any reason a sticker can't be found, the staff don't know about WWW or the stickers have been mislaid then **simply get a signature instead**.
- Collect **12** stickers from DIFFERENT pubs, with **6** from the white options opposite, **5** blue and **1** gold, and you win three bottles/cans of beer.
- Collect **24** stickers from DIFFERENT pubs, this time **12** white, **9** blue and **3** gold, and you win a WWW T-shirt, two bottles/cans of beer, and entry into a prize draw for a case of 12 beers.
- Collect **36** stickers from DIFFERENT pubs, this time **18** white, **14** blue and **4** gold, and you win a WWW polo shirt, two bottles/cans of beer, and entry into a prize draw for a case of 12 beers.
- Collect stickers from all 65 pubs, and your prizes are a WWW sweatshirt, four bottles/cans of beer, and entry into a prize draw for a case of 12 beers.

All successful participants will receive at least one bottle of Old Tom as part of their beer allocation and also receive an Old Tom commemorative badge.



Completed sheets need to be returned by **Saturday 10 January** via post. Please note: **Electronic entries will not be accepted.**

Please ensure you include your name and two contact details, such as address/mobile number/email address – and your size if you are eligible for a T-shirt, polo shirt or sweatshirt.

See ssm.camra.org.uk for further details.



Winter Warmer Wander

Sponsored by **ROBINSONS OLD TOM**



All stickers must be from different pubs and collected 14 November to 28 December 2025.

Collect 12 stickers: 6 white, 5 blue, 1 gold to win 3 bottles/cans of premium beer, at least one being Old Tom.

Collect 24 stickers: 12 white, 9 blue, 3 gold to win a WWW T-shirt, 2 bottles/cans (min 1 Old Tom) & draw entry.

Collect 36 stickers: 18 white, 14 blue, 4 gold to win a WWW polo shirt, 2 bottles/cans (min 1 Old Tom) & draw entry.

Visiting all 65 pubs wins you a WWW sweatshirt, 4 bottles/cans of beer (min 1 Old Tom) and entry in prize draw.

Pubs in red text have restricted opening hours, i.e. less than from **1pm to 10pm** every day of the week.

Full details, location map and much more information: <https://ssm.camra.org.uk>

Arden Arms 23 Millgate Stockport SK1 2LX	Ash Tree 9-11 Wellington Road Ashton-under-Lyne OL6 6DA	Bakers Vaults Market Place Stockport SK1 1EU	Blossoms 2 Buxton Road Heaviley Stockport SK2 6NU	Chiverton Tap 8 Mellor Road Cheadle Hulme Stockport SK8 5AU
Ye Olde Vic 1 Chatham Street Edgeley Stockport SK3 9ED	Angel Inn 197 King Street Dukinfield SK16 4TH	Ape and Apple 28-30 John Dalton St Manchester M2 6HQ	Beer Shop 13 Kingsleigh Road Heaton Moor Stockport SK4 3QF	City Arms 46-48 Kennedy Street Manchester M2 4BQ
Wilfred Wood 204 London Road Hazel Grove Stockport SK7 4DF	Wobbly Stamp 130 Stockport Road Cheadle SK8 2DP	3 Drinks Behind 285 Stockport Road Gee Cross Hyde SK14 5RF	Calverts Court 13 St Petersgate Stockport SK1 1EB	Crown 154 Heaton Lane Stockport SK4 1AR
Waterhouse 67-71 Princess Street Manchester M2 4EG	Wallop 97 Lapwing Lane West Didsbury Manchester M20 6UR	Bridge Beers 55 Melbourne Street Stalybridge SK15 2JJ	Church Inn 90 Ravenoak Road Cheadle Hulme Stockport SK8 7EG	Elizabethan 33 Heaton Moor Road Heaton Moor Stockport SK4 4PB
Victoria Tap Victoria Station Long Millgate Manchester M3 1WY	Unicorn 1-7 Ashley Road Altrincham WA14 2DP	Costello's 18 Goose Green Altrincham WA14 1DW	Crown 6 Vale Close Heaton Mersey Stockport SK4 3DS	Gateway 882 Wilmslow Road East Didsbury Manchester M20 5PG
Swan With Two Necks 36 Princes Street Stockport SK1 1RY	Three Tunnes 194 London Road Hazel Grove Stockport SK7 4DQ	Halfway House 123 Whiteacre Road Ashton-under-Lyne OL6 9PS	Duke of York 113 Buxton Road Heaviley Stockport SK2 6LR	Great Central 306 Wilmslow Road Fallowfield Manchester M14 6NL
Station Buffet Bar Rassbottom Street Stalybridge SK15 1RF	Steel Works 242 Stockport Road West, Bredbury SK6 2AN	Jack's Bar 3 Hamnett Street Hyde SK14 2EX	Ford Madox Brown Wilmslow Park Rusholme Manchester M14 5FT	Gullivers 109 Oldham Street Manchester M4 1LW
Red Lion 532 Wilmslow Road Withington Manchester M20 4BT	Society Rooms 49-51 Grosvenor Street Stalybridge SK15 2JN	JP Joule 2A Northenden Road Sale M33 3BR	Ladybarn Social Club 13 Green Street Ladybarn Manchester M14 6TL	Head of Steam 653 Wilmslow Road Didsbury Manchester M20 6QZ
Rain Bar 80 Great Bridgewater St Manchester M1 5JG	Sheldon Arms Lord Sheldon Way Ashton-under-Lyne OL6 7UB	Northumberland Arms 64 Compstall Road Marple Bridge SK6 5HD	Mounting Stone 8 Woodford Road Bramhall Stockport SK7 1JJ	Heaton Hops 7 School Lane Heaton Chapel Stockport SK4 5DE
Piccadilly Tap 8 Gateway House Piccadilly Approach Manchester M1 2GH	Samuel Oldknow 22 Market Street Marple SK6 7AD	Pointing Dog Grove Lane Cheadle Hulme Stockport SK8 7NE	New Oxford 11 Bexley Square Salford M3 6DB	Lower Turk's Head 36 Shudehill Manchester M4 1EZ
Petersgate Tap 19a St Petersgate Stockport SK1 1EB	Royal Oak 22 Stockport Road Cheadle SK8 2AA	Silly Country 121 Market Street Droylsden M43 7AR	Railway 3 Lapwing Lane West Didsbury Manchester M20 2NT	Magnet 51 Wellington Road North, Heaton Norris Stockport SK4 1HJ
Paramount 33-35 Oxford Street Manchester M1 4BH	Reddish Ale 14 Broadstone Road Reddish Stockport SK5 7AE	Red Lion 83 Stockport Road Cheadle SK8 2AJ	Red Bull 14 Middle Hillgate Stockport SK1 3AY	Marble Arch 73 Rochdale Road Manchester M4 4HY
Oxford Road Tap Station Approach Manchester M1 6FU	Old Monkey 90-92 Portland Street Manchester M1 4GX	Norfolk Arms 2 Town Street Marple Bridge SK6 5DS	Molly House 26 Richmond Street Manchester M1 3NB	Millstone 65-67 Thomas Street Manchester M4 1LQ

Name: Post Code:

Communication - 2 of: Email / Phone / Address.....

Shirt (circle if applicable): T-shirt / Polo / Sweatshirt Size: S / M / L / XL / 2XL / 3XL / 4XL Please tick for information about CAMRA

Completed forms to be with: Sue Lightfoot, 10 New Beech Road, Heaton Mersey, Stockport SK4 3DD by Saturday 10 January 2026.

Please note: Electronic entries will NOT be accepted.

Bev + Stu welcome you to
THE STEELWORKS

242 Stockport Road West, Bredbury SK6 2AN

Community Microbar recently awarded the
'Concept of the Year' award at the Made in Stockport awards.



We sell quality wines and spirits, 4x handpulled real ales,
real cider, local and continental beers and 9x premium keg lines.

Quiz night every Tuesday at 7.30pm

Live acoustic music every weekend

Dog friendly, baby changing
facilities and a huge beer garden



OPENING TIMES

Monday Closed

Tuesday - Thursday

3pm-10pm

Friday - Saturday

12pm-11pm

Sundays

12pm-8pm



J.W. LEES

BITTER
ALL-MALT AMBER ALE

**BORN WHEN
BEER
WAS FOR
TALKING OVER.
NOT ABOUT.**

BORN OF A TIME WHEN BEER WAS BEER

What's Brewing

Brewery News from around the region

Two Phoenixes, One Adventure

Earlier this year, Lucy, brewery manager at **Phoenix Brewery** in Heywood, and Becca, their business development manager, took a trip to **PHX Brew Co.** in Phoenix, Arizona.



During their visit in March, they met the PHX team, sampled an incredible range of beers, and watched the brewing process unfold live. It was there that the idea for an 'Across the Pond' collaboration was born (Lucy and Becca are pictured here with the PHX team).

And so, in April this year, it was the PHX team's turn to cross the Atlantic, to visit Phoenix Brewery. The team from the US were amazed by the brewery's history – it first opened in 1874, a full 38 years before the State of Arizona was even founded!



Collaboration brews are nothing new in the world of beer – it's common for local breweries to join forces and create unique, one-off beers for fans to enjoy. Phoenix Brewery has always embraced these opportunities, seeing them as an exciting way to connect with new people, share knowledge, and experiment with ideas.

This collaboration is slightly different, though. Instead of brewing a single beer together, Phoenix Brewery and PHX Beer Co. decided to swap recipes and recreate each other's best-selling brews on opposite sides of the Atlantic – a true 'Across the Pond' twist on the traditional collaboration.

In Arizona, the team at PHX Beer Co. have been busy recreating Phoenix Brewery's famous Wobbly Bob, while in Heywood, the brewers at Phoenix Brewery have taken on PHX's award-winning Arizona Gold. Both teams have worked closely together to perfect the recipes, source authentic ingredients, and ensure that each beer captures the character and craftsmanship of its original home – while adding just a hint of something new from 'Across the Pond'.



With Wobbly Bob now going down a treat in the city of Phoenix, **Arizona Gold** has been released in the UK. This 5% beer is described as a "mouth-watering, hoppy brew. A perfect fusion of British brewing craftsmanship and American ingenuity, this hop-forward recipe bursts with vibrant fruity aromas, balanced bitterness, and a smooth, refreshing finish."

The beer will be available in both can and cask. Also out on cask will be Phoenix's Christmas beer – Crimble Festive Chocolate Stout (4.8%), which will be on cask and in bottle.

If you scan the QR code above, it will take you to a short documentary about the whole story.

New from Robinsons



By the time you read this, Robinsons' annual **Old Tom Day** will probably have been and gone, as it was scheduled for 1 November and we found this out a bit too late for the last issue of *Opening Times*. Nevertheless, we hope everyone was out and about celebrating this classic strong ale.

You will, however, be in time to catch the brewery's seasonal beers for both November and December. For November, we see the long-anticipated appearance of **Broken Record**, a 3.4% light mild. The beer is so named in recognition of the stream of requests for a mild from CAMRA!

For December, look out for the very festive-sounding **Winter Nights**, a 4.5% roasted porter. It's not often that Robinsons have

produced a dark beer as a seasonal, but those that have appeared have been delicious. Both beers will be in selected Robinsons pubs, so look out for them.

Steelfish on the Move



We have previously reported that **Steelfish Brewing** had to move out of the premises it was sharing with **Courier Brewing**, due to the latter's expansion.

The good news is that new premises have been found on Temperance Street, just behind Manchester Piccadilly station. Not

only that, but there will also be room for an on-site brewery tap. As we went to press, everything was very much a work in progress but we hope it will be up and running by Christmas (and possibly before then). More next time.

Anniversaries



Several local brewers have celebrated significant birthdays over the past couple of years. In 2025, Macclesfield's **RedWillow Brewery** is 15 years old, while up in New Mills, **Torrside Brewing** marks ten years in operation. To mark Torrside's decade, the brewery was presented with a birthday card by High Peak CAMRA. Pictured here with the card are: (left to right) Chris Clough, Angharad Hughes, Nick Rothko-Wright and Sarah Rothko-Wright (missing are the third Torrside couple, Peter and Emma Sidwell). Photo by Geoff Williamson.

RedWillow has marked its anniversary year by sweeping up awards left, right and centre. The latest batch came from the Indie Beer Awards, where no fewer than nine of the brewery's entries came away with awards, including a silver for cask **Breakfast Stout** and a bronze for cask **Wreckless**.

Merry Christmas

From,
Phoenix X



**PHOENIX
BREWERY**
EST. 1982

T: 01706 367359
E: BEER@PHOENIXBREWERY.CO.UK
W: PHOENIXBREWERY.CO.UK



PHOENIX BREWERY GREEN LANE, HEYWOOD, LANCASHIRE OL10 2EP

NORTHUMBERLAND ARMS

64 COMPSTALL ROAD, MARPLE BRIDGE SK6 5HD

GREATER MANCHESTER PUB OF THE YEAR 2024

FIVE HANDPUMPS SERVING CHANGING CASK-CONDITIONED BEERS



200 years old Community-Owned

NOT JUST A PUB BUT ALSO A

CHATTY CAFÉ

**PROVIDING THE OPPORTUNITY
FOR A CUP OF TEA OR COFFEE,
A CAKE, AND A CHAT**

**SHOWN HERE
SKY SPORTS,
TNT AND
AMAZON**

**WALKING GROUP LAST
SUNDAY EACH MONTH**



**STREET FOOD FROM AROUND
THE WORLD EVERY THURSDAY**

Opening times

Mon to Thurs - 3pm until 11pm

Fri & Sat - 1pm until 11.30pm

Sun - 1pm until 11pm

www.thenorthumberlandarms.com



Scribbles on a Beermat



Welcome to Scribbles on a Beermat: the quiet corner of a Stockport pub where our Poet in Residence, Carl Burkitt, is sipping a pale ale and scribbling some poems.

We're Talking

He turned 50 this summer
but we're not talking about that.
We're talking about toffee vodka in the Lake District,
custard coloured ale in the Lake District,
takeaway pizza in the Lake District.

He turned 50 this summer
but we're not talking about that.
We're talking about United's goalkeeper situation,
the quality of Stockport County's home shirt,
United's goalkeeper situation,
the quality of Stockport County's away shirt,
United's goalkeeper situation.

He turned 50 this summer
but we're not talking about that.
We're talking about lads in the navy
who never learned how to swim,
who never learned how to polish their shoes,
who never learned how to respect other people.
We're talking about United's goalkeeper situation.

He turned 50 this summer
but we're not talking about that.
We're talking about garden centres,
Wetherspoons, 90s rock bands,
shut down Manchester nightclubs,
chip shops, doing the weeding,
keeping the world safe,
people who are no longer here,
how he pays for
the 24/7 Christmas movie channel
so his mum can watch
Christmas films all year round.

He turned 50 this summer
but we're not talking about that.
We're talking about how he hopes
he doesn't have to wait
until he dies to have a poem written about him.

He turned 50 this summer
but we're talking.

Stockport's Lost Pubs with Dave Stearn

We continue our series looking at the Lost Pubs of Stockport. This issue: the letter M.

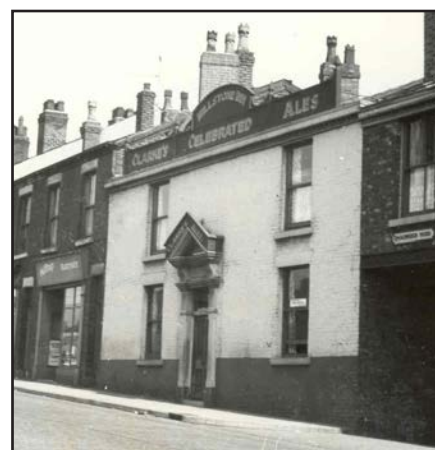


Our first pub, the **Manchester Arms**, on the junction of Wellington Road South and St. Petersgate, was first mentioned in the 1840s, when Edward Hooper was listed as landlord. By the middle of the nineteenth century the pub had been

renamed the Cobden and Manchester Arms in tribute to Richard Cobden, Stockport's MP from 1841 to 1847, and one of the leaders of the anti-Corn Law movement. A statue of the celebrated figure was erected just round the corner in St. Peter's Square. Throughout the twentieth century, the pub was again known as the Manchester Arms. A Bell & Co. house at the start of the century, the Hemphshaw Brook Brewery was taken over by Robinsons in 1949. In the 1980s, it was known as a bikers' pub, popular with a mixed crowd including workers from the nearby Royal Mail sorting office and train station. The early 2000s saw a change of direction, when it was refurbished as a music venue aimed towards a younger crowd and, with a nod to its heritage, it was renamed Cobden's. It finally closed in 2013 and was mothballed for almost a decade before being turned into Cobden House apartments.

Also under the letter 'M', the **Millstone Inn**, the name of two pubs, both now lost. The first was on Portwood Place and dated back to the 18th century, possibly prior to the industrialisation of the area in the 1780s, when a new bridge was built across the Goyt, directly linking Portwood to the Township of Stockport. The pub was located next to Brinnington Manorial Corn Mill, which explains its name. Unlike the rest of Stockport, Portwood was not well-served by public houses. The Millstone was the only licensed house in the area until the 1820s. When it was put up 'To let' in the 1860s, there was a brewery attached to the pub. Brewing ceased shortly after, when it became part of the Daniel Clifton estate, the company which owned Royal Oak Brewery. It was last mentioned in the 1890s, although the building stood until the 1970s.

Our second lost 'Millstone' pub was open within living memory. It stood at 112 Lancashire Hill and was first mentioned in 1853. The beer house got its name from a traditional industry of the area – there was a flour mill just over the road, and up to the 1800s there was a windmill nearby. The pub disappeared in 1967 as part of the post-war redevelopment of that part of town, but amongst



the housing developments of the 1960s/70s the milling heritage of Lancashire Hill lives on, in the name 'Stonemill Terrace'.

Dave Stearn works for Stockport Local Heritage Library, and all the photos in this article are courtesy of them. More images can be seen at www.stockport.gov.uk/stockport-image-archive.

Calling All Homebrewers

Competition launched for 2026 Beer Festival

Stockport & South Manchester Branch of CAMRA is again running a competition for local homebrewers to find five beers for Bar Nouveau at next year's Stockport Beer & Cider Festival.

Bar Nouveau was introduced in 2015 and features brand-new beers launched at the festival. It's proved to be a very successful feature and we will be running it again next year (the festival dates are 18-20 June). There will be up to ten beers, all served on a separate bar and properly cooled to ensure optimum condition.



For the past few years, we have involved local homebrewers and have been delighted by the response. As in past years, each of the five winners will have their beer brewed by a local brewery. The festival will purchase two firkins of each winning beer and the rest will be sold on to the market by the brewers concerned. If you are a home brewer, this is a great chance to join in a brew day at a local brewery, and also see one of your beers out there on sale to the public.

The brewers who have kindly agreed to host the winners are:

- Marble Beers, Salford (Bitter, Pale Ale & Session IPA)
- Cloudwater Brew Co., Manchester (ESB, Strong Pale Ale & IPA)
- Runaway Brewery, Stockport (Speciality)
- Steelfish, Manchester (Mild & Brown Ale)
- Torrside Brewing, New Mills (Stout & Porter)

The five categories are quite broadly drawn so that you can use your imagination. Here's what we are looking for:

Mild & Brown Ale – this is a chance to take old beer styles and run with them. Maximum ABV 5.5%.

Bitter, Pale Ale & Session IPA – session ales, pale ales, brown, amber or blonde – the choice is yours. Maximum ABV 5%.

Strong Pale Ale, ESB & IPA – while we're not style fanatics, you should aim for a minimum ABV of 5.1%. Apart from that, it's up to you – brown, red, black or white IPAs are all welcome. Maximum ABV 6.5%.

Stout & Porter – again this is broadly drawn – added flavours and ingredients optional. Maximum ABV 6.5%.

Speciality – this is where you can really go to town. Saisons, bocks, Rauch biers – all are welcome. Note – all beers with lactose will fall into this category. Maximum ABV 7%.

A few things to bear in mind: although the beers will be judged from bottle, they will have to work as cask beers, so please do consider commerciality. We will be buying some of each brew for the festival, but the host brewers will have to sell the rest into the trade, so the beers will have to be commercially viable for them.

Please also note that we will be looking to ensure the entries observe the ABV limits for each category – a tiny amount of drift is OK but not huge overshoots.

How to enter – just email your name, contact details and which categories you want to enter to: stocam@btinternet.com. **The cut-off date for entering is 11 January (but we won't need details of actual beers until early February).** Judging will take place in late March/early April next year.

Pictured left – judging in progress this year at the Petersgate Tap in Stockport.

Winners Win!

For some years now, the beers from the homebrew competition have fared well in the Beer of the Festival voting, and this year was no exception. In fact, Sheffield homebrewer Jon Britton's beers won at two festivals.

His London porter, brewed at **Torrside** under the name Beowulf, took silver in the Beer of the Festival competition at Chorlton Beer Festival, while the imperial version, Grendel, went one better at Stockport, picking up the overall Beer of the Festival. Jon is seen here (centre) along with Torrside's Chris Clough and Sarah Rothko-Wright, with a trio of certificates. Jon tells us that Torrside are rebrewing both Beowulf and Grendel for the winter season, so if you've not yet tried them, you'll get a second chance.



It was Sheffield's year, because the bronze in the Beer of the Festival was won by another homebrewer from the city – Joe Lee, with Stratagem, a lovely session IPA, brewed at **Marble**. We haven't yet been able to present the certificate for this, but Joe is pictured (second right) receiving his category winner's certificate from Marble head brewer Joe Ince, along with Marble brewers Wyn Davies (left) and

Carl Eccles (right).

Pub Walks with Chris Morris

Woodley to Hyde

A pub walk can be the perfect pick-me-up during the winter months, despite the damp and cold. A gentle stroll through nature can be revitalising, not just for the body but also the mind, whether taking some time out for yourself, or with the good conversation of a friend. We can then add the prospect of a welcoming pub serving fine cask beer, and perhaps warm ourselves next to a real fire. A pub features at the start of this walk, in Woodley, with a choice of four at the finish in Hyde. As with all our pub walks, it is designed to be used with the excellent public transport options in our area.

Bus and Train Information

This walk starts at Woodley Railway Station but it's also suitable for bus users. Train services from Manchester Piccadilly run hourly all week, except Sundays, when there is no service. The 330 bus stops outside the station, and runs from Stockport to Ashton via Hyde and Dukinfield. The service is as frequent as every ten minutes during the day, reduced in the evening and Sundays. The walk finishes in Hyde where Hyde Central Railway Station and Hyde Bus Station use the same train and 330 bus services as before.

The Walk

This flat 2.5-mile leisurely stroll along a delightful stretch of the Peak Forest canal offers a traffic-free corridor of nature in a peaceful setting. The canal towpath is well maintained with gravel, but there may be puddles after wet weather, so choose suitable footwear. All pubs welcome dogs.



If arriving by train, cross over the footbridge at Woodley Station to Platform 1. Then exit the station through the car park and turn left to walk along the main road pavement. We now pass the stops for the 330 service where bus users can join the walk. After 300 yards we arrive at our pre-walk pub,

the **Navigation**. This traditional Robinsons local offers a variety of seating arrangements, including bench seating, in the three cosy and characterful rooms. Unicorn and Trooper were the cask beers available when I last visited. For a pre-walk meal, food is served from noon to 6pm at weekends, 4pm to 6pm Thursday and Friday. A £7 chicken basket is available at other times. Cash is preferred.

From the pub's front door, the path to reach the canal is opposite and to the left. There's a handy traffic island to help us cross over. Walking down the cobbled path, we join the canal towpath and continue straight ahead with the water on our right. After one and a half miles we cross over the canal on a snake bridge from 1801. Its construction cleverly enabled horses to cross over to the other side, whilst still pulling their narrowboats. Rejoining the towpath on the other side, we now find the water on our left. After a further half mile, we reach another snake bridge. Instead of carrying on along on the canal, we walk straight ahead and up to join the main road, where we turn right. We are now entering the centre of Hyde. After 50 yards, we have our first option for a rewarding pint of quality cask beer in a gem of a pub.

The **Cheshire Ring** is the perfect setting for post-walk pints, with a warm welcome and excellent beer. It's been in the *Good Beer Guide* for 20 consecutive years, offering up to six cask beers, a handpump for cider and a good range of quality keg. A fine example of a traditional pub interior awaits, with ceramic tiling and bench seating surrounding the impressive central bar. It also offers a large dose of delightful



plus Hoof from Farm Yard Brew.

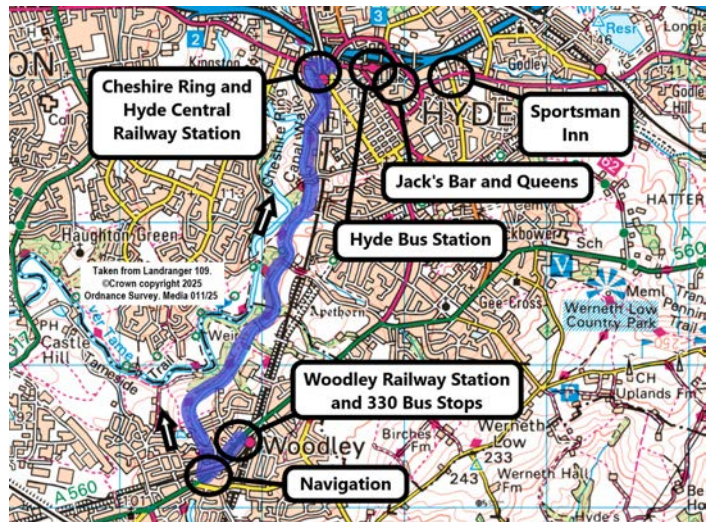


which were from Mallinsons, Millstone and Kirkby Lonsdale when I last dropped by. Dogs are allowed in the outdoor seating at the back.



throughout and small drinking tables. Also listed in the *Good Beer Guide*, a vast range of up to eight Rossendale Brewery cask beers is available, all reasonably priced. The food is very popular and has a Cuban twist.

The **Queens** is open all day, every day and offers a friendly welcome in a traditional no-nonsense local. Bench seating features throughout, including in the impressive pool room. Reasonably priced Holt's Bitter was sampled when I last popped in, with the Holt's Mild just finished.





Unmistakably Northern
— Since 1849 —

Events, Socials and Meetings Plus local CAMRA Contacts

Local CAMRA Contacts

Stockport & South Manchester (SSM)

www.ssm.camra.org.uk

Contact: *Lawrence Devaney*; secretary@ssm.camra.org.uk

Facebook – facebook.com/SSMCAMRA

X – @SSMCAMRA

High Peak, Tameside & NE Cheshire (HPNC)

www.highpeak.camra.org.uk

Contact: *Ben Zwierink*; ben.zwierink@gmail.com

Facebook – facebook.com/HPTNECCAMRA

Macclesfield & East Cheshire (MEC)

www.eastcheshire.camra.org.uk

Contact: contact@eastcheshire.camra.org.uk

Facebook – facebook.com/groups/897449270304045

X – @MECCAMRA

Central Manchester (CMCR)

www.centralmanchester.camra.org.uk

Contact: *Sean O'Mahoney*; chair@centralmanchester.camra.org.uk

Facebook – facebook.com/groups/CentralManchesterCamra

X – @MCRCentralCamra

CAMRA National website: camra.org.uk

Formal Branch Meetings

CAMRA members only at these meetings.

Saturday 8 November – Snug, 122 Market Street, Droylsden, M43 7AA. Starts 2pm. (HPNC)

Thursday 13 November – Blossoms, 2 Buxton Road, Heaviley, SK2 6NU. Guest speaker: David Bremner, Robinsons Director of Marketing. Starts 8pm. (SSM)

Tuesday 2 December – Cotton Tree, Ingersley Road, Bollington, SK10 5RE. Starts 8pm. (MEC)

Thursday 11 December – Nursery, 258 Green Lane, Heaton Norris, SK4 2NA. Meeting will be followed by a prize quiz. Starts 8pm. (SSM)

Social Events & Presentations

Everyone welcome at these events.

Tuesday 4 November – Weekday wander in Chorley: meet 10:40am in the 'Platform 13/14 waiting room' at Piccadilly station for Barrow-in-Furness train. First pub: Sir Henry Tate, New Market Street, PR7 1DB. (SSM)

Friday 14 November – Winter Warmer Wander launch: 6:30pm Red Lion, Wilmslow Road, Withington, M20 4BT. Followed by Head of Steam, Gateway, Crown (Heaton Mersey) and finishing in the Crown Inn, Heaton Lane, Stockport. (SSM)

Saturday 15 November – Pub of the Season presentation: New Inn, 2-3 Market Place, Buxton, SK17 6EB. From 2pm. (HPNC)

Friday 21 November – Edgeley & Shaw Heath Stagger: 7:30pm Alexandra, 195 Northgate Road, SK3 9NJ; 8:30pm Armoury, 31 Shaw Heath, SK3 8BD; final pub Ye Olde Vic, 1 Chatham Street, SK3 9ED. (SSM)

Saturday 22 November – Newcomer Award: G&J Muckers, 36-38 Sunderland Street, Macclesfield, SK11 6JL. From 1pm. (MEC)

Sunday 23 November – Greater Manchester Cider Pub of the Year presentation: Petersgate Tap, 19a St Petersgate, Stockport, SK1 1EB. From 2pm. (SSM)

Wednesday 26 November – Trip to Chesterfield: catch the 10:55am train from Stockport. (HPNC)

Thursday 27 November – Pub of the Month presentation: Angel Inn, 19-20 Market Place, Stockport, SK1 1UN. From 8pm. (SSM)

Wednesday 3 December – Weekday Wander to Altrincham: meet 11:15am at Stockport train station. First pub: Unicorn, 1 Ashley Road, WA14 2DP. (SSM)

Wednesday 10 December – Branch Christmas Meal: Queens Head, Park Lane, Congleton, CW12 3DE. From 7:30-10pm. (MEC)

Friday 19 December – Christmas Stagger: Hillgate to Stockport Market Place. Start 7:30pm at the Blossoms, 2 Buxton Road, Heaviley, SK2 6NU; 8:30pm Red Bull, 14 Middle Hillgate, SK1 3AY. (SSM)

Monday 29 December – Post-Christmas Social: Wharf, 107 Brook Street, Macclesfield, SK11 7AW. From 7:30pm. (MEC)

Tuesday 30 December – Pub of the Month presentation: Horse & Farrier, 144 Gatley Road, Gatley, SK8 4AB. From 8pm. (SSM)

Tuesday 6 January – Weekday Wander: Piccadilly Station Gyratory. Meet 10:55am Piccadilly Station concourse near Platform 4. First pub: Waldorf, 12 Gore Street, M1 3AQ. (SSM)

Pubs, Pints, People.

Give a gift membership to the beer lover in your life!

Beers are best shared with others. So, treat someone you like to a CAMRA gift membership and bring them along to the pubs and festivals that matter.

Set the membership to start on someone's special day!

They'll receive all the great discounts, benefits and vouchers you do, through the post.

Gift a membership today!
camra.org.uk/gift-membership

JOIN TODAY

CAMRA



BACK IN CASK FOR 2025

EXCLUSIVELY AT SELECTED ROBINSONS PUBS
THROUGHOUT NOVEMBER & DECEMBER

WWW.ROBINSONSBREWERY.COM