

OPENING TIMES

NOVEMBER / DECEMBER 2024

FREE



**INSIDE: WIN PRIZES ON THE WINTER
WARMER WANDER / CIDER
NEWS / PUB WALK AND
MUCH MORE...**

2024



Campaign
for
Real Ale

REDWILLOW BARS LOYALTY CARD

DRINK PINTS, GET POINTS!

SCAN THE QR TO JOIN AND
START EARNING REWARDS IN
OUR MACC AND BUXTON BARS.



AFFORDABLE ALES, ALL YEAR LONG

WATERHOUSE

67-71 Princess Street
M2 4EG
0161 200 5380

MOON UNDER WATER

68-74 Deansgate
M3 2FN
0161 834 5882

THE SEVEN STARS

6-8 Dantzic Street
M4 2BS
0161 817 2980

THE PARAMOUNT

33-35 Oxford Street
M1 4BH
0161 223 1820

PICCADILLY

49 Piccadilly
M1 2AP
0161 236 9206

WETHERSPOON MANCHESTER

THE GATEWAY

882 Wilmslow Road
East Didsbury
0161 438 1700

FORD MADDOX

Wilmslow Rd
M13 9NG
0161 256 6660

GREAT CENTRAL

306 Wilmslow Road
Fallowfield
0161 248 1740



- USE ALE FINDER ON THE JDW APP TO SEARCH THE AREA FOR YOUR FAVOURITE ALE,
OR SEARCH FOR NEW ONES - 

Contents & Information

In this issue...

Pubs of the Month 5	Pub Walk 15 & 19
Heard at the Bar 7	Homebrew Competition ... 21
Cider & Perry 9	GBBF Winter 22
Poem / Lost Pubs 11	Membership Promotion ... 22
Winter Warmer Wander .. 12 & 13	Diary & Awards 23
News Extra 15	

About Opening Times & Contacts

Opening Times is produced by the Stockport & South Manchester Branch of CAMRA, the Campaign for Real Ale. Additional material is supplied by the High Peak, Tameside & North East Cheshire Branch, Central Manchester Branch and the Macclesfield & East Cheshire Branch. It is printed by Paper Red Media and distributed throughout Stockport, Tameside, South Manchester and East Manchester. There are also numerous outlets in Macclesfield & East Cheshire, Manchester City Centre, High Peak and Glossop.

News, articles and letters are welcome to the editorial address – John Clarke, 45 Bulkeley Street, Edgeley, Stockport, SK3 9HD. Email - stocam@btinternet.com. Phone 0775 383 6898. Advertising rates on request or online at: www.ssmcamra.co.uk/viewnode.php?id=192265. Local advertising John Clarke (as above) or contact Neil Richards MBE at n.richards@btinternet.com

Trading Standards

For complaints about short measure pints etc. contact the Citizens Advice Consumer Service. This works with all the Trading Standards services in the North West and is supported by the Office of Fair Trading. You can contact the Consumer Service at the following address:

www.citizensadvice.org.uk/consumer/get-more-help/if-you-need-more-help-about-a-consumer-issue

Their telephone number is 03454 04 05 06. To report a matter to Trading Standards go to:

www.citizensadvice.org.uk/consumer/get-more-help/report-to-trading-standards

Subscriptions

Available at £10.50 for one year (make cheques payable to Stockport & South Manchester CAMRA). Apply to Lawrence Devaney, 2 Kingsway, Bramhall, Stockport, SK7 3BG.

Copyright

Unless otherwise stated, all material in *Opening Times* is the copyright of CAMRA, the Campaign for Real Ale. Please contact the editorial address if you wish to reproduce anything in *Opening Times*.

Public Transport

Opening Times does not recommend you drink and drive. Local public transport information can be obtained online as follows:

- * Transport for Greater Manchester: www.tfgm.com. 0161 244 1000
- * East Cheshire: 0300 123 5500
www.cheshireeast.gov.uk/public_transport/public-transport.aspx
- * Derbyshire: www.derbybus.info

Pub Opening Hours

We hope you will visit all of the pubs mentioned in *Opening Times*. There isn't the space to print all of their opening hours – however these can be checked on CAMRA's online pub guide: whatpub.com

Disclaimer

We aim to ensure that the information in *Opening Times* is correct at the time of going to press. If we get something wrong then please get in touch (editorial contact details on the left) and we'll print a correction. Please also note the opinions expressed in *Opening Times* are not necessarily those of CAMRA either locally or nationally.

Your Local CAMRA Contacts & Websites

Stockport & South Manchester

www.ssm.camra.org.uk

Contact: Lawrence Devaney; secretary@ssm.camra.org.uk

High Peak, Tameside & NE Cheshire

www.highpeak.camra.org.uk

Contact: Ben Zwierink; ben.zwierink@gmail.com

Macclesfield & East Cheshire

www.eastcheshire.camra.org.uk

Contact: contact@eastcheshire.camra.org.uk

Central Manchester

www.centralmanchester.camra.org.uk

Contact: Sean O'Mahoney; chair@centralmanchester.camra.org.uk

Social Media

Many of the local CAMRA branches have Facebook and Twitter accounts you can follow:

Stockport & South Manchester:

Facebook – www.facebook.com/SSMCAMRA

X – @SSMCAMRA

High Peak, Tameside & NE Cheshire:

Facebook – www.facebook.com/HPTNECCAMRA

Macclesfield & East Cheshire:

Facebook – www.facebook.com/groups/897449270304045

X – @MECCAMRA

Central Manchester:

Facebook – www.facebook.com/groups/CentralManchesterCamra

X – @MCRCentralCamra

CAMRA Discounts

A list of local pubs generously offering a discount to CAMRA members can be found online at www.camra.org.uk/join/membership-benefits/real-ale-discount-scheme/

Front Cover

Ronnie Bell, landlady of the Sun & Castle in Hillgate in Stockport (and dog Molly) get into the Christmas spirit. This is a great Holt's local – do drop in over the festive season. Photo by Lawrence Devaney.

Contributors

John Clarke, Alan Gent, Dave Hanson, Peter Butler, Paul Felton, Dave Burston, Steve Davis, Chris Morris, Lawrence Devaney, Neil Worthington, Sue Lightfoot, Carl Burkitt, Dave Stearn, Peter Edwardson, Jim Flynn, Dave Sheldon, Cath Potter, Steve Ingham, Ben Zwierink, Pete Farrand,.


Distribution Manager – Janet Flynn

Copy date for the Jan/Feb issue is Friday 6 December

A FAMILY BUSINESS

STEPHENSONS

Supporting The Catering Trade Since 1868






PROUD SPONSORS OF
PUB OF THE MONTH


A forgotten British classic:
The 10-sided Lantern Tankard

VISIT THE NORTH'S LARGEST CATERING
CASH & CARRY

tableware • catering equipment • disposables

   **stephensons.com**
161 Buxton Road, Stockport, Cheshire, SK2 6EQ

THE SAMUEL OLDKNOW
BEERS WINES & SPIRITS



Opening Times: Monday - Thursday 1-11 Friday - Sunday 12-11
Six Real Ales, Craft Beer & Lager
Traditional Cider, Wine & Spirits

22 Market Street, Marple
0161 425 9530 - samueloldknow.co.uk

The Petersgate Tap



Winner, Stockport Pub of the Year, 2023

Winner Stockport Cider Pub of the Year
2018, 2019, 2020, 2022, 2023, 2024

Winner Gtr Manchester Region
Cider Pub of the Year, 2018, 2019, 2024

Champion Mild Pub 2018, 2019, 2023

Good Beer Guide
2018, 2019, 2020, 2022, 2023, 2024, 2025

6 rotating cask ales, 8-10 real ciders
Bottle Shop with 150+ beers and ciders

Events:

Leaf Promotions live music, 1st Fri
Double Indemnity (music & poetry) 3rd
Wed

Torrside Brewing Monsters Weekends
6 tutored tastings a year

19a St Petersgate, Stockport SK1 1EB
Our pub charity is Stockport Mentell

Pubs of the Month

Stockport & South Manchester Winners for November and December



The November Pub of the Month is the Sun in September in Burnage. Peter Edwardson has been along.

The Sun in September stands on Burnage Lane in South Manchester close to the junction of Kingsway and Fog Lane. It was originally a detached Victorian villa in extensive grounds, which was converted to pub use by Samuel Smith's in the 1980s. At first, the décor had something of an Indian Raj theme, which is where the name came from, but successive refurbishments have greatly toned this down. The grounds now provide an attractive beer garden featuring several mature trees, which is a popular spot in summer.

After a period of closure, the pub was taken over in October 2019 by John and Kerry Fitzmaurice. Unfortunately, this was quickly followed by the onset of Covid, but since lockdowns came to an end they have succeeded in developing it into a very popular local with a strong band of regulars and often a lively buzz of conversation, and it is this achievement that has won them the award. It supports a number of social activities including a darts team and regular quiz nights. After several closures over the years, it is now the only traditional pub remaining for some distance in any direction.

The main door leads you through into the spacious lounge, which has an L-shaped bar on the left, and four distinct seating areas centred around an impressive feature fireplace, one section with tramcar-style seating. There is also a plainer public bar with its own entrance around the back of the pub. The only cask beer is Old Brewery Bitter, kept in reliably good condition, while the pub also offers the usual Sam's keg range, including the highly-regarded Extra Stout and two good-value milds.

Join us on Thursday 28 November from 8.30 pm onwards and help John and Kerry celebrate their well-deserved award. The pub is only a five-minute walk from Burnage Station on the Piccadilly-Manchester Airport line.

The Pub of the Month award is sponsored by Stephenson's, a local family firm that has been supplying the local pub and catering trade for over 150 years. Check out their advert on the previous page.

A FAMILY BUSINESS
STEPHENSONS
Celebrating 150 Years of Inspiring the Caterer



The Stockport & South Manchester CAMRA Pub of the Month award for December 2024 goes to the Blue Bell, Barlow Road, Levenshulme, writes Jim Flynn

Tucked away a short walk from the A6 (turn down Cromwell Grove and keep walking), there has been a pub on this site for seven hundred years (Oliver Cromwell's troops were billeted here and a perhaps unlikely legend has it that Dick Turpin once slept in this old coaching inn). The current Blue Bell, though, was built on the site in the 1930s, but during the last war the building suffered bomb damage, with shrapnel marks still evident on the west wall.

Sam Smith's have owned this impressive pub since 1948, and in 2005 the pub was shut for 11 months while a very extensive refurbishment took place. Prior to its reopening very early the following year, Mark and Mary Dunn were appointed as licensees (Mark has worked for Sam Smith's for 30 years) and they have been at the pub ever since; and it must be said what a fine job they have made of it. Not very long after their appointment came the excellent cask beer, Old Brewery Bitter.



Having removed most of the post-war additions during the refurbishment, the pub has an elegant authentic feel to it, with a spacious vault, a large lounge with a roaring fire and a small snug, both off the main lounge bar area. The extensive light oak woodwork gives the pub a warm and cosy feel, and it is understandably very popular with a wide range of locals (a variety of groups use the facilities). To the rear is the well-hidden gem of the pub, its extensive tree lined garden, which in the summer is a real sun trap.

What really makes the Blue Bell special though is the dedication of Mark and Mary, the fine beer and the pub's special position at the heart of the community. That is why the local CAMRA branch will be marking Mark and Mary's commitment to excellence over the last 19 years on Monday, 30 December from 8pm onwards, when a great night will we are sure be enjoyed by all, no doubt in front of a roaring fire.

The pub is less than 10 minutes from the 150, 171 192 and 197 bus routes, and adjacent to the 172 route, and Levenshulme train station, so there is no excuse not to turn up and celebrate with us.



TAP ROOM NOW OPEN



**THE BOLLINGTON
BREWING CO.**
BREWING PASSION

**BROOK MILL
MACCLESFIELD, SK11 7BQ**

**THE VALE
COTTAGE**



“The Country Pub In Town”
The Best Kept Real Ales

From:



MOORHOUSES

+ Regular
Guest Ales

Great Beer, Great Quizzes,
Great Staff a Great Gorton Pub

Fine Home Cooking
Lunchtimes Mon-Fri 12:00-3:00



**1 CROFT BANK, GORTON,
MANCHESTER, M18 8WH**
Tel: 0161 843 3545
www.thevalecottage.co.uk



Arden Arms

23 Millgate, Stockport

0161 480 2185 info@ardenarms.com



**At least 4
Cask Beers**

**Fresh Food
served
7 days a week**

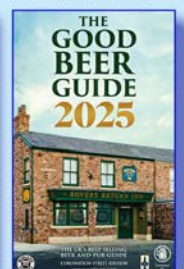
**Ask about our Christmas Menu
Live Bands Every Saturday**

Swan with Two Necks

36 Prince's Street, Stockport

0161 480 2141 geoff.troughton@outlook.com

**At least
3 Cask
Beers**



Heard at the Bar

Pub News from Stockport, Manchester, Tameside and beyond

New-look Nursery



Hydes' **Nursery Inn** on Green Lane, Heaton Norris, reopened on Saturday 5 October after a short closure for refurbishment. Built in 1939, it has a superb unspoilt interior, which has gained it Listed Building status and a three-star entry on CAMRA's National Inventory of Historic Pub Interiors. This has been

carefully preserved, and the work can be best described as a thorough refresh and reupholstering.

The pub has acquired new and substantial-looking loose furniture, including comfortable chairs in the lounge with backs and arms. The cask beer range is Original, Hopster and Lowry: at present there are no Hydes' seasonal ales. The food offer majors on variations on the theme of Pie, Mash and Gravy supplied by Pieminister.

Hesketh Finally Reopens



After a protracted closure involving any number of options, the **Hesketh**, on Hulme Hall Road in Cheadle Hulme, has finally reopened in much the same guise as before. Externally, there's not much difference apart from a collection of red 'Spanish umbrellas'.

Inside, it's been smartened up but in broadly the same decor (the currently fashionable grey). Whilst the general layout is largely unaltered, the most notable change is the addition of a games room featuring a pool table, a darts board and large screen TV showing sport.

On the bar, well, not much change either; a plethora of keg lines and two lonely handpump 'soldiers' – when *Opening Times* called, these were dispensing Theakston's Best Bitter and a special from Timothy Taylor's. The pub opens at noon every day and food is served until 8pm.

Britons Protection Latest

Mark West, Allan Hudd and all other staff at the **Britons Protection**, on Great Bridgewater Street in the City Centre, have reason to celebrate, with the resolution of their dispute with Star Heineken. An agreement has been struck which will see the pub in the safe hands of the business partners for a further period of ten years, with the renewal of their business lease for the same term.



Speaking recently, Allan Hudd said it was a successful outcome that would see the future of the Britons Protection assured under the current management team. Allan is looking forward to the certainty of

providing what they do best. Steve Ingham, pub preservation officer for Central Manchester CAMRA, said what this means is that they will be able to offer a range of local, regional and national beers and a vast range of whiskies of their choosing, which was the underpinning principle of the campaign.

During the campaign, Allan, with the support of CAMRA, submitted an application to the City Council and the pub is currently the only premises in the city centre which has received the status of Asset of Community Value, and this is due primarily to Allan's efforts.

Macclesfield Update



After much delay, **G&J Muckers** on Sunderland Street has eventually opened. It is owned by Glyn Naden, the long-term tenant of the nearby **Jolly Sailor**. This conversion of the former Soma Bar has a traditional pub feel, with a log burner set inside a large fireplace keeping the place warm. It is on two floors, with a bar on the ground floor serving Draught Bass and, reflecting its freedom from tie, a changing beer from the nearby Storm Brewery, along with other guest beers. The first floor will be a Thai restaurant operated as part of the pub.

It has been announced that the **Dolphin** on Windmill Street will close when the current licensee retires. It is believed that Robinsons will 'mothball' the pub. At the time of writing, the tenancy is not currently advertised on the Robinsons website. This is possibly because they are more concerned with supporting new tenants at the more centrally located and larger **Silk Trader** on Brook Street.

City Centre News

In early September, **Lamb of Tartary** on Newton Street (that had replaced the once-popular Cottonopolis) closed suddenly after only six months in operation. It had never appeared busy. When it opened, it was the only regular outlet for a Buxton brewery cask ale in central Manchester. However, cask ale was removed due to poor sales shortly before its closure.

Central Manchester CAMRA's Steve Davis attended the Joseph Holt 175th beer festival as a brewery guest and took the opportunity to enquire about the plans for the closed **Shamrock** in Ancoats. Holts acquired this a couple of years ago, but it has not yet been developed. Steve was assured that Holts still intend to develop and reopen the pub, but they had had numerous planning issues with Manchester City Council. However, they are now making progress with these issues so hopefully something will happen next year.



More Pub and Brewery News on Page 15



A BREED APART.

BLACKSHEEPBREWERY.COM



GREAT BEER. REAL CHARACTER.

PURITYBREWING.COM



Our mission is to navigate an exhilarating journey through **the world of beer**. A world where traditional quality brands are fused with a passion for innovation.

We are dedicated to pushing the boundaries of flavour; constantly exploring and creating new and exciting beers that captivate the senses, while energising the UK brewing community



Cider and Perry

News, Awards and Events



CAMRA's prestigious National Cider and Perry Pub of the Year competition recognises the best pub or club that promotes and encourages the sale of real cider and perry across the UK.

In recent years, the winner has been at the far end of the country, but the 2024 champion is within easy travelling distance for *Opening Times* readers.

That Beer Place, on Foregate Street in Chester, has become a hub for both beer and cider enthusiasts alike, with a real focus on showcasing a diverse range of ciders and perries. The judges were impressed with the select and interesting variety of draught ciders and perries, supplemented by a diverse and wide choice of bottles. The newly crowned pub boasts of up to 140 real ciders and perries, promoting producers from the UK, Europe, America and beyond, along with around 350 beers. The popular and inclusive venue attracts thirsty visitors from far and wide and is well respected within the local community.

Reacting to being crowned the best cider pub in the UK, Lisa Lord (who owns the pub with her husband Dale) said:

“We’re chuffed to bits to be named CAMRA’s National Cider and Perry Pub of the Year 2024! For the past three and a half years, we’ve had a passion for being at the forefront of championing real cider and perry, and it’s great to finally be recognised on a national level. Our goal has always been to make Chester a destination for cider and perry celebration in the UK. This award only solidifies that vision.”

Judges praised the extensive knowledge and enthusiasm for cider and perry shown by the pub’s team, and their deep commitment to educate the public about these wonderful drinks. That Beer Place regularly stages events with independent UK cider makers and industry experts, with future plans to launch a training programme named That Cider School to teach local restaurants and drinks buyers about the diversity and variety of cider.

The pub hosts monthly Chester Cider Club evenings which aim to foster a community of cider lovers who are open to exploring new flavours and reject the chapitalised, diluted, industrial drinks that masquerade under the same name – something CAMRA wholeheartedly agrees with.

CAMRA's competition co-ordinator, Sarah Newson said: “That Beer Place is a very worthy winner, and I congratulate Lisa and Dale for

creating such a positive environment for cider and perry education to flourish. Their desire to put cider front and centre in the UK drinks scene is admirable and one we can all support”.

Sarah also praised the other three finalists in the competition: the Frothblowers, Peterborough; the Hop Inn, Hornchurch, and the Woodman, Bridport.

Susanna Forbes

The cider world was shocked and saddened by the untimely death in September of Susanna Forbes, writes Cath Potter.



Without her, Manchester wouldn't have the cider culture that we are proud of today. Nationally and internationally, she was the guiding light of the new cider renaissance and the rise of aspirational cider. For us here in Manchester, she was a friend and supporter of Manchester Cider Club from its formation in 2019.

Susanna and husband James launched Little Pomona Cider & Perry in 2015, which has since become one of the most exciting and important cider producers in the world. She was always so generous with her time and expertise, offering help and support with projects large and small with her relentless energy, cheerful voice and positivity.

A lasting legacy can be seen in Cider Women – a beacon for inclusivity within cider and the wider drinks industry. We will miss her leadership and guidance but she leaves a great legacy and Cider Women will continue to grow and live up to her vision.

She was a great supporter of CAMRA and was awarded our national Pomona Award in 2021. Manchester Cider Club held a special gathering in FellnQ to remember her and drink delicious cider.

Wassail Susanna – you will never be forgotten.



CELEBRATING 25 YEARS OF BREWING

A progressive and passionate independent brewery located in the heart of Yorkshire. Borne of family values; unity, team work and integrity. Crafted over two decades, we've perfected the science of producing ales of consistently high quality and honed the art of brewing beers that are loved by all.



Scribbles on a Beermat



Welcome to Scribbles on a Beermat: the quiet corner of a Stockport pub where our Poet in Residence, Carl Burkitt, is sipping a pale ale and scribbling some poems.

Ah Bugger It, I'll Get a Curly Fries From Across the Road on the Walk Back, I've Got Some Bread and Butter at Home for a Good Chip Barm

John don't give an F tonight. He's binning off the broccoli quiche he had planned and he's decided to get curly fries

from across the road on the walk back because he's got some bread and butter at home for a good chip barm.

His monosyllabic mates – Mick, John, Paul and Ron – all agree it's the right move because the curly fries from across the road are perfect for a good chip barm.

John agrees, itches his pork scratching nose, and plans to get a double portion just in case his wife is hungry too.

Friendspotter

He sits in the pub window spotting potential friends flying by.

There's the Long-Bearded Dawdler wearing wrestling T-shirts strolling like a man with everywhere and nowhere to go.

There's the Rapid Forehead using its pointed radar moving as quickly as the smile travels across his face.

There's the Cold Weather Shorts Wearer, his feathered chest plumped, rocking in time with a strut fit for a turkey in summer.

There's the Timid Southerner tripping over his accent, pecking his beak down streets looking for somewhere to land.

He sits in the pub window spotting potential friends flying by.

Stockport's Lost Pubs with Dave Stearn

We continue our series looking at the Lost Pubs of Stockport. This issue: the letter G.



Our first pub, the George, was originally built on the corner of Heaton Lane, shortly after the creation of the 'New Road', Wellington Road as we know it, in the early 1820s. It replaced Hillgate as the main route for travellers passing through the town, and the hotel was one of several large

commercial premises which sprang up to cater for the increasing number of people catching the stagecoach to Manchester and beyond. The inn took its name from the reigning monarch at the time, George IV.

In addition to giving a resting place for weary travellers, it specialised in hosting large events and banquets for groups and political parties, and held an event to mark the laying of the 'finishing stone' of the new viaduct in 1840.

The photo shows the original pub building around 1900, when horse-drawn trams had replaced the stagecoach as the preferred form of transport.

In the 1930s, the George was rebuilt in the fashionable 'Art Deco' style, giving the feel of a stylish picture house foyer, all curves, veneer and mirrors, even a revolving front door.

After several reinventions, for a time it was called the Manhattan, the George finally closed its doors in 2018. It is the site of a planned 15-storey apartment block.

Our second lost pub under the letter 'G' is the Grosvenor Hotel on Union Road. It started life in the 1820s as the Union Tavern next to the new 'Vernon' footbridge, built over the Mersey on land donated by Stockport Philanthropic Society.



When it opened, in addition to the tavern, the Union had its own brewhouse capable of producing 40 barrels of beer a week. It had cellars, stabling for horses, a cart house and its own piggery. Brewing on the site appears to have come to an end in the 1850s.

In 1872, proprietor Joseph Bateman advertised 'wines, spirits, ales and porter' and promised 'Refreshments on the shortest notice – good accommodation for railway and other travellers and good stabling'.

The Union Tavern was rebuilt in the 1890s, one of many old inns given a Victorian makeover. It became a hotel and with it gained a new name, the Grosvenor. Grosvenor is the family name of the Dukes of Westminster, Lord Lieutenant of Cheshire at that time.

The hotel, which was located opposite the old Woolworth's store, was demolished in the mid-1960s to make way for the Merseyway Shopping Centre. Union Road is now Deanery Way.

Dave Stearn works for Stockport Local Heritage Library, and all the photos in this article are courtesy of them. More images can be seen at www.stockport.gov.uk/stockport-image-archive.

Winter Warmer Wander

Friday 15 November to Sunday 29 December 2024



In November and December we are once again running the Winter Warmer Wander, our annual celebration of festive beers to bring you a little winter cheer across the Christmas period. Just like Mild Magic, this is a chance for you to visit some new pubs and try some new beers. We have lots of great prizes – and different ways to win them.

When selecting your beers, please remember that the reasoning behind the Winter Warmer Wander is to promote particular beer styles – stout, porter, old ale and barley wine (all of **any** alcoholic strength), and 'Christmas' or 'seasonal' ales of 4.4% ABV or above, brought out specially for the Christmas period, such as Tom & Berry (Robinsons), Plum Pudding (JW Lees) or Sixex (Holts).

Many thanks to the 65 pubs who have signed up to take part, and a special mention goes to Robinsons brewery, and Old Tom in particular, for sponsoring this year's Winter Warmer Wander.

What you need to do:

- ★ Buy a half or a pint of CASK-CONDITIONED stout, porter, old ale or barley wine (all can be any ABV) or a Christmas/seasonal special (Of 4.4% ABV or above).
- ★ Ask the pub for a sticker to put on your WWW entry sheet opposite (additional sheets can be downloaded from ssm.camra.org.uk).
- ★ Collect 12 stickers from DIFFERENT pubs, with **6** from the white options opposite, **5** blue and **1** gold, and you win three bottles of premium beer, one of which is Old Tom.
- ★ Collect 24 stickers from DIFFERENT pubs, this time **12** white, **9** blue and **3** gold, and you win a WWW T-shirt, two bottles of beer and entry into a prize draw for a case of 12 beers.
- ★ Collect 36 stickers from DIFFERENT pubs, this time **18** white, **14** blue and **4** gold, and you win a WWW polo shirt, two bottles of beer and entry into a prize draw for a case of 12 beers.
- ★ Collect stickers from all 65 pubs, and your prizes are a WWW sweatshirt, four bottles of beer and entry into a prize draw for a case of 12 beers.

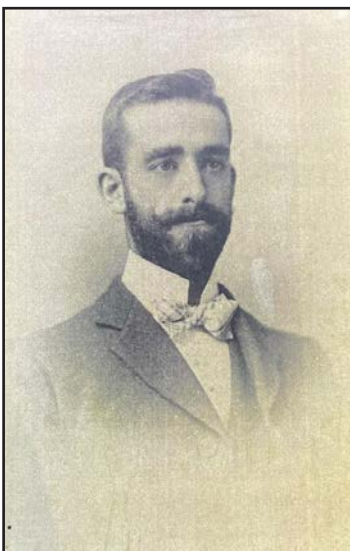
All successful participants will receive a bottle of Old Tom as part of their beer allocation and an Old Tom commemorative badge.

Completed sheets need to be returned by **Saturday 11 January** via post. **Please note: electronic entries will not be accepted.**



Please ensure you include your name and two contact details, such as address/mobile number/email address – and your size if you are eligible for a T-shirt, polo shirt or sweatshirt.

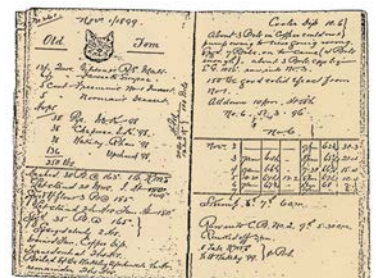
Beer In The Blood



Brewery Buildings, near the Wheatsheaf in Langham, Rutland, was where Alfred Evan Munton (later to be known as Fred) started life in 1870, *writes Sue Lightfoot*. His father, also Alfred, worked as a cooper and brewer in the nearby brewery (which later became Ruddles).

In the late 1870s, the family moved to Edward Street in Salford where Alfred senior continued working as a brewer, later moving to work in Stretford where he died in 1893. Young Alfred became a brewer himself, and by the time he was 30 he had his own family and lived in Loyalty House, Loyalty Place, in Stockport. He had married Emma Robinson, a daughter of Frederic Robinson, in 1893 and continued family tradition by naming his first son Alfred, born in 1899.

This proved an important year in another way as it was on 1 November 1899 that Fred devised a recipe for a new beer, Brew No. 261, and drew a sketch of the brewery cat, Old Tom, who inspired the name of the beer. The historic page from the brewer's book is shown here.



Alfred 'Fred' Munton was head brewer at Robinsons for nearly 30 years and his son became a brewer as well. Old Tom went on to win some of the industry's most prestigious awards, including World's Best Ale. Read more about the history of Old Tom here – www.robinsonsbrewery.com/our-beers/about-old-tom/old-tom-history/.



Winter Warmer Wander

Sponsored by **ROBINSONS OLD TOM**



All stickers must be from different pubs and collected 15 November to 29 December 2024.
 Collect 12 stickers: 1 gold, 5 blue & 6 white to win 3 bottles of premium beer, one being Old Tom.
 Collect 24 stickers: 3 gold, 9 blue & 12 white to win a WWW T-shirt, 2 bottles & entry in prize draw.
 Collect 36 stickers: 4 gold, 14 blue & 18 white to win a WWW polo shirt, 2 bottles & entry in draw.
 Visiting all 65 pubs wins you a WWW sweatshirt, 4 bottles of beer & entry in prize draw.

Pubs in red text have restricted opening hours, ie not 1pm to 10pm every day of the week.

Full details, location map and much more information <https://ssm.camra.org.uk>

Arden Arms 23 Millgate Stockport SK1 2LX	Ash Tree 9-11 Wellington Road Ashton under Lyne OL6 6DA	Bakers Vaults Market Place Stockport SK1 1EU	Blossoms 2 Buxton Road Heaviley Stockport SK2 6NU	Chiverton Tap 8 Mellor Road Cheadle Hulme Stockport SK8 5AU
Ye Olde Vic 1 Chatham Street Edgeley Stockport SK3 9ED	3 Drinks Behind 285 Stockport Road Gee Cross Hyde SK14 5RF	Angel Inn 197 King Street Dukinfield SK16 4TH	Ape and Apple 28-30 John Dalton St Manchester M2 6HQ	City Arms 46-48 Kennedy Street Manchester M2 4BQ
Wilfred Wood 204 London Road Hazel Grove Stockport SK7 4DF	Wobbly Stamp 130 Stockport Road Cheadle SK8 2DP	Arden Arms Ashton Road Bredbury Stockport SK6 2RY	Archive 2 Mellor Road Cheadle Hulme Stockport SK8 5AU	Duke of York 113 Buxton Road Heaviley Stockport SK2 6LR
Waterhouse 67-71 Princess Street Manchester M2 4EG	Wine & Wallop 97 Lapwing Lane West Didsbury Manchester M20 6UR	Bridge Beers 55 Melbourne Street Stalybridge SK15 2JJ	Beer Shop 13 Kingsleigh Road Heaton Moor Stockport SK4 3QF	Elizabethan 33 Heaton Moor Road Heaton Moor Stockport SK4 4PB
Victoria Tap Victoria Station Long Millgate Manchester M3 1WY	Unicorn 1-7 Ashley Road Altrincham WA14 2DP	Costello's 18 Goose Green Altrincham WA14 1DW	Calverts Court 13 St Petersgate Stockport SK1 1EB	Gateway 882 Wilmslow Road East Didsbury Manchester M20 5PG
Swan With Two Necks 36 Princes Street Stockport SK1 1RY	Three Tunnes 194 London Road Hazel Grove Stockport SK7 4DQ	Halfway House 123 Whiteacre Road Ashton under Lyne OL6 9PS	Church Inn 90 Ravenoak Road Cheadle Hulme Stockport SK8 7EG	Great Central 306 Wilmslow Road Fallowfield Manchester M14 6NL
Station Buffet Bar Rassbottom Street Stalybridge SK15 1RF	Tapsters 31 Old Street Ashton under Lyne OL6 6LA	Jack's Bar 3 Hamnett Street Hyde SK14 2EX	Crown 6 Vale Close Heaton Mersey Stockport SK4 3DS	Gullivers 109 Oldham Street Manchester M4 1LW
Red Lion 532 Wilmslow Road Withington Manchester M20 4BT	Steel Works 242 Stockport Road West, Bredbury SK6 2AN	JP Joule 2A Northenden Road Sale M33 3BR	Ford Madox Brown Wilmslow Park Rusholme Manchester M14 5FT	Head of Steam 653 Wilmslow Road Didsbury Manchester M20 6QZ
Red Bull 14 Middle Hillgate Stockport SK1 3AY	Society Rooms 49-51 Grosvenor Street Stalybridge SK15 2JN	Northumberland Arms 64 Compstall Road Marple Bridge SK6 5HD	Hatters Arms 81 Church Lane Marple SK6 7AW	Heaton Hops 7 School Lane Heaton Chapel Stockport SK4 5DE
Rain Bar 80 Great Bridgewater St Manchester M1 5JG	Sheldon Arms Lord Sheldon Way Ashton under Lyne OL6 7UB	Pointing Dog Grove Lane Cheadle Hulme Stockport SK8 7NE	Ladybarn Social Club 13 Green Street Ladybarn Manchester M14 6TL	Lower Turk's Head 36 Shudehill Manchester M4 1EZ
Piccadilly Tap 8 Gateway House Piccadilly Approach Manchester M1 2GH	Samuel Oldknow 22 Market Street Marple SK6 7AD	Silly Country 121 Market Street Droylsden M43 7AR	Mounting Stone 8 Woodford Road Bramhall Stockport SK7 1JJ	Magnet 51 Wellington Road North, Heaton Norris Stockport SK4 1HJ
Petersgate Tap 19a St Petersgate Stockport SK1 1EB	Red Lion 83 Stockport Road Cheadle SK8 2AJ	Reddish Ale 14 Broadstone Road Reddish Stockport SK5 7AE	Railway 3 Lapwing Lane West Didsbury Manchester M20 2NT	Marble Arch 73 Rochdale Road Manchester M4 4HY
Paramount 33-35 Oxford Street Manchester M1 4BH	Old Monkey 90-92 Portland Street Manchester M1 4GX	Norfolk Arms 2 Town Street Marple Bridge SK6 5DS	Molly House 26 Richmond Street Manchester M1 3NB	Millstone 65-67 Thomas Street Manchester M4 1LQ

Name: Post Code:

Communication - 2 of: Email / Phone / Address.....

Shirt (circle if applicable): T-shirt / Polo / Sweat Size: S / M / L / XL / 2XL / 3XL / 4XL Please tick for information about CAMRA

Completed forms to be with: Sue Lightfoot, 10 New Beech Road, Heaton Mersey, Stockport SK4 3DD by Saturday 11 January 2025.

Please note: electronic entries will NOT be accepted.

EATERY DRINKERY TOMFOOLERY

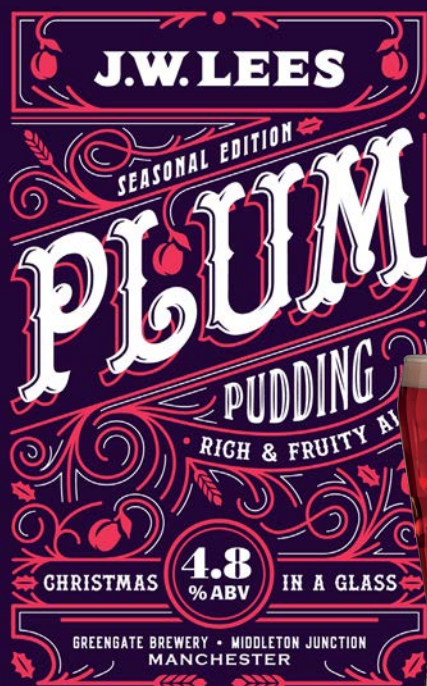
wallop

CERTIFIED
High Grade
BEERMONGER

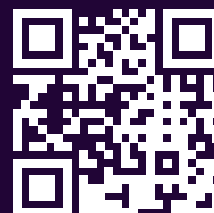
AND
PEDDLER OF
FINE WINE



97 LAPWING LN, WEST DIDSBURY 76-78 KING ST, KNUTSFORD 403 BURY NEW RD, PRESTWICH



Style	Fruity Ale
Hops	Styrian Golding
Malt	Pale Ale 7 Crystal
	Mahogany
	Fruit, Rich, Smooth
	Fruit, Sweet
Bitter	
Sweet	



CHRISTMAS IN A GLASS

J.W. LEES

News Extra

More pub and brewery news from across the area

Oldknow Expands



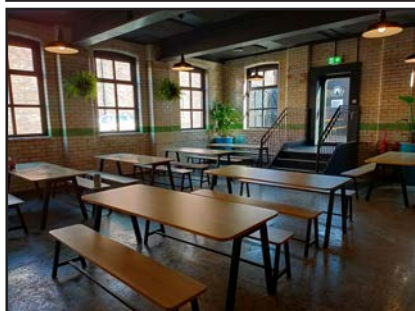
The **Samuel Oldknow**, on Market Street in Marple, is going from strength to strength. It's busy every day from opening, and is now set to expand upwards, having taken possession of the flat on the floor above. This will allow for much-needed additional seating.

In addition, the Oldknow's Anthony Meynell, and his younger brother Martin, are to open a new bar in the centre of Romiley, in a former café opposite the Forum. It will be named the **Voltigeur**, after a famous racehorse, and also the name of a former pub in Hartlepool; run by their great-great-grandfather (there's only one other pub with this name, we think, and that's in Spennymoor, County Durham). All being well, the pub should be open in November, with six handpumps and nine keg lines.

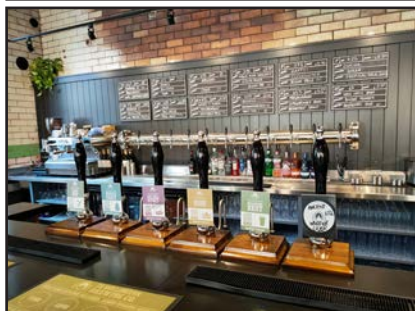
Bollington Brewery On The Move



In a story as old as time in the craft brewing industry, breweries grow up, expand and need new premises. Since day one, Bollington Brewing knew their time at Adlington Road, across the road from their first pub, the Vale Inn, was limited. The site had an uncertain future, so there was always one eye on a move. But after ten years and several failed attempts to move, nothing suitable had materialised.



Until one day in late October 2023, midway through the project to build their fifth venue – the Foundry in Congleton – a chance conversation with a local builder resulted in a viewing being booked at an old mill in the back streets of Macclesfield. Brook Mill was perfect: space for a brewery and a Taproom, close to the centre of town, and five minutes' walk from the bus and train stations.



They moved in during February this year and,

after three months of digging drains, laying floors, and welding pipes, brewing commenced in May. Then came the job of building the Taproom. The mill was originally built as the local Co-op bakery in the 1900s, and one room has glazed bricks which are a statement piece of the new **Taproom**. The bar itself has been built out of sections reclaimed from the Cask Tavern, their third pub, bought back in July 2013. The other statement piece is the keg wall, repurposed from

the old chimney. The old chimney which was adapted with 12 keg taps that serve both Moravka lagers, Bollington craft kegs, including Solaris and Resonance, and keg beers from other craft breweries.

There's a line-up of Bollington cask beers on five handpumps, including weekly specials, one of which has been Oat Mill Biscoff Stout. Other drinks on offer include wine, cider – still and keg – and soft drinks.

The Taproom (on Parker Street, SK11 7BQ) is open on Thursday and Friday 4pm to 11pm, Saturday 12-11pm and Sunday 12-8pm. Occasional street food will be on offer over the coming months while the kitchen is being developed. We think this is another serious addition to the ever-improving Macclesfield beer scene. Well worth a visit.

Mild Magic Awards



It's cheers to the **Castle** in Macclesfield, which has scooped the Best Pub award in the 2024 Mild Magic Ale Trail, organised by Stockport & South Manchester CAMRA.

The annual ale trail, now in its 30th year, covered 100 pubs in and around the Stockport and Manchester area, and, for the first time, pubs in Macclesfield were invited to join in. The Castle was voted Best Pub for mild ale by thirsty drinkers, but that's not all. One of the many milds that the pub served up in the five-week trail, **Sarah Hughes Dark Ruby**, was voted Best Mild of the trail. So it was only fitting that both awards should be made at the pub.



Sarah Hughes Brewery is based at the Beacon Hotel in Sedgeley in the West Midlands, and the owner, Simon Massey, travelled up to Macclesfield to receive the award. He revealed that 60 per cent of the Dark Ruby output went to the Beacon, but was delighted that some was available for other pubs to enjoy.

So, when Castle regular Kevin Rothwell heard that the pub was participating in Mild Magic, he asked owner Rebecca Prunty to try and order some Dark Ruby. She managed to obtain three nine-gallon barrels, and each sold out within 24 hours when word got round. Needless to say, there was another nine-gallon barrel available for the awards ceremony on 28 September, and this, too, only lasted 24 hours!

Pictured above, Simon Massey (left) receives his award from Mild Magic organiser Darren Berry. In the bottom photo, we see Kevin Rothwell receiving the pub's award from Darren, with bar staff Dave Dooley and Tommy Lewis looking on.

YOUR LOCAL
JOSEPH HOLT PUBS

THE FIVEWAYS

MACCLESFIELD ROAD
HAZEL GROVE
SK7 6BE

THE GREY HORSE

99 BROADSTONE ROAD
REDDISH
STOCKPORT
SK5 1AS

THE GRIFFIN HEALD GREEN

124 WILMSLOW ROAD
HEALD GREEN
CHEADLE
SK8 3BE

THE GRIFFIN HEATON MERSEY

552 DIDSBURY ROAD
HEATON MERSEY
STOCKPORT
SK4 3AJ

PLATFORM 5

47 STATION ROAD
CHEADLE HULME
CHEADLE
SK8 7AA

THE SUN & CASTLE

MIDDLE HILLGATE
STOCKPORT
SK1 3DG



170 YEARS OF
AWARD-WINNING

ALES AND LAGERS



JOSEPHHOLTBREWERY



@JOSEPHHOLT



@JOSEPHHOLT1849

Pub Walks with Chris Morris

Stockport Pub Round, Part 5 - Bramhall to Cheadle

The Stockport Pub Round is a series of linked pub walks, along traffic-free nature trails, visiting fine pubs in the process. Continuing from where we finished stage four (High Lane and Middlewood to Bramhall), stage five features a number of peaceful woodlands and attractive riverbanks. A good pub features at the start, midway and at the end. As with all these walks, they are easily accessible by public transport.

Public Transport Information

Stage five starts at Bramhall railway station, with train services every hour. Buses stop close by, too, for the 378, 378A and 379. The walk finishes in Cheadle, with bus stops for 11, 42B, 42C, 312, 370 and 371 services (Cheadle's railway station is due to reopen at the end of 2025). A couple of bus stops can be found midway if you wanted to cut the walk short.

The Walk

Part five is four miles long and mostly flat, so not challenging. However, some sections may be muddy after wet weather. All pubs welcome dogs.

From outside Bramhall station, cross over the main road at the pedestrian lights, walking left on the other side, then immediately right. This is signposted Bramhall Lane South and passes an attractive thatched cottage. Entering woodland and crossing a footbridge over a stream, carry on straight ahead along the tarmacked path until you reach the main road. The trail route is right here, but for those wanting an early pub stop, for food or drink, turn left instead and, after 300 yards along Ack Lane East, you will find **Duttons**, which is part of the JW Lees estate.



Recently refurbished to a high standard, including a name change from the previous Victoria, Duttons now has a smart and sophisticated interior with art deco undertones. A good mixture of seating arrangements can be found, including outside seating at the front, side and rear. Food is popular and is available from 11am until late all week. The cask beers on handpump were Lees Bitter and MPA when I last visited.

Continuing our walk, we now retrace our steps back along the main road to our previous position. Carry on further along Ack Lane East for a few yards and turn right along Hillbrook Road. Walk under the railway bridge and left along the road. Walk anticlockwise around the roundabout and before the railway bridge turn right after a wall to enter a woodland. After passing through a kissing gate, carry straight ahead on the main path as it passes through Carr Wood for half a mile until we reach a main road. Carry straight across at the pedestrian lights to the path opposite, which passes through more woodland and then a car park.

Turn left here and go straight on at the crossroads which leads to a café, toilets and the spectacular frontage of the 14th century Bramhall Hall – a look around is recommended. When looking at the main door of the hall, our route is behind us, past the sundial and right before the ditch and then down the steps. Carry on straight ahead at the bottom, passing between two attractive lakes. Ignoring the bridge ahead, turn left with the lake on our left, continue straight ahead until

you climb up steps to a main road. Cross over here and rejoin the path on the other side, down more steps and next to the brook on our right. Take care on this stretch as it can get very muddy after wet weather.



We take the left fork in the path to leave the brook's edge, cross a little footbridge before eventually rejoining the riverbank. Ignore the bridge to the right and continue ahead through a gap in the fence, past a little brick building on our left and straight ahead towards open fields accessed through another gap in the fence. Walk through two fields keeping the brook on your right and passing under the railway viaduct. At the main road beyond, turn right and cross over at the pedestrian lights, then left at the next road, signposted to our mid-walk pub, the **March Hare**, which is found at the end of the road. Bus stops for the 368 and 313 are close by.

Although built in the 1980s, the March Hare has been skilfully furnished to give the look and feel of a cosy country pub. Low ceilings, exposed timbers and subtle lighting add to the relaxed environment, with a peaceful beer garden popular in summer. Although the main focus is food, drinkers are not forgotten, with Wainwright and Doom Bar available on cask when I last dropped by.

Heading back through the car park, take a left after the large car park gate, walk through a gap in the fence, then left to rejoin our trail along more woodland. Continue straight ahead along this path for one mile. When approaching a housing estate, take a left to continue through woodland. The path then reaches a main road. Cross straight over here to the lane opposite. After 150 yards take a left, passing through bollards and a lane passing between houses. Cross over the brick block street and then turn right along a track with garden fences on our right. Take a left at the fork which eventually rejoins the riverbank. Take a left up five wooden steps, right, then down five more and left to continue with the river on our right.

After 100 yards take the right fork and then through a gap stile. Our route here has been temporarily altered around a new construction. Walk straight ahead between the fence and riverbank. At the corner of the fence turn left over the grass and then right to join a tarmacked path that becomes a kerbed road. Continue straight ahead until you reach a main road. Turn right here and cross over at the second pedestrian lights, right on the other side then immediately left along a gravel path with the river now on our left. After 150 yards turn left and walk straight ahead for a further 100 yards. Now left at the fork, across a stone footbridge and right to rejoin the riverbank, with the water now on our right. After 100 yards turn left, away from the brook. Following this path leads us past a wooden gate and along a residential road. Turn right to join a street and then right at the main road which takes us into the centre of Cheadle, where a choice of pubs is available.

Continues on page 19

BREWING GREAT BEERS FOR OVER 40 YEARS.



T: 01706 367359

E: BEER@PHOENIXBREWERY.CO.UK

W: PHOENIXBREWERY.CO.UK



PHOENIX BREWERY GREEN LANE, HEYWOOD, LANCASHIRE OL10 2EP

CITY BEERS


STALYBRIDGE
BUFFET BAR

TOWN PRICES

LOOKING FOR AMAZING REAL ALE AND CRAFT BEERS?

You don't have to pay city prices to get city quality beer. The original Victorian Buffet Bar at Stalybridge Railway Station is just **minutes outside of Manchester** and part of the **Original Ale Trail!**



BEERHOUSES.CO.UK/
CITYBEERSTOWNPRICES



Pub Walks Continued



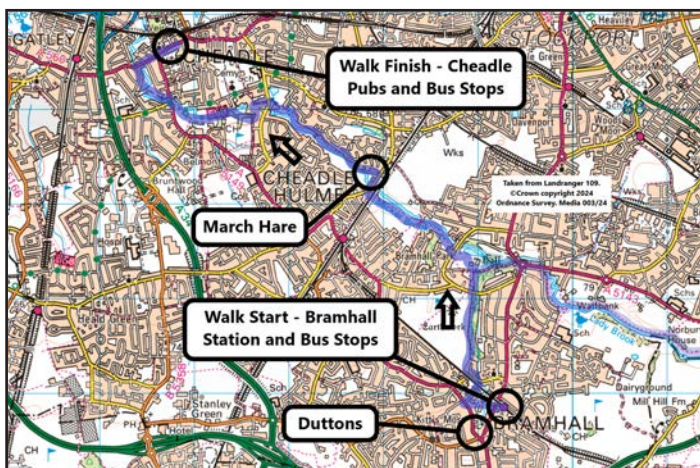
The **Crown** is a popular wet-led pub with a warm welcome that attracts all ages. The traditional interior features attractive tiling, wood panelling and old photos of Cheadle which adorn the walls. Sports are shown on a number of screens. When I last called in, the reasonably priced Hydes cask beers were Original, Lowry and Happy Campers – part of the brewery’s seasonal range celebrating classic TV programmes.



Hydes beers also feature at the **James Watts**, but inside, the interior is very different. Stylish and contemporary furnishings feature throughout, with a mixture of seating arrangements to suit all tastes. Outside seating is found at the rear. On last inspection, the cask beers were Original, Hopster

and the seasonal Survey Says.

For full pub details, including opening times, visit whatpub.com.



Only the finest farmers make it into our beauty parade

Shortly after harvest each year the best hop farmers in the UK journey to our brewery in Yorkshire. They bring with them carefully packed parcels of their finest crops. In what has become known as the *hop beauty parade* our expert brewers meticulously assess each batch, judging not just looks but also personality. The brewers rub each hop in their warm hands to feel the quality of the resins and release the delicate aromas that are vital to the signature flavour and balance of our beer. Only then are the *choicest* whole leaf hops selected to brew your *beautiful* pint of Landlord.

All for that taste of Taylor’s



Stagger

Portwood to Heaton Lane by Paul Felton

A warm night in August saw a group of us out for a wander around the pubby joys of Portwood, on the eastern edge of Stockport town centre.



We began at the **Midway** on New Bridge Lane. In the 1980s this was a rare example of a free house, but now it's more of a restaurant that serves cask beer. Lots of 'tasteful' grey wood (you will doubtless know the sort of thing), not especially welcoming

to anyone who might be a drinker rather than a diner. The single cask beer on offer was an interesting choice, Timothy Taylor's Golden Best, the sort of light mild you don't see that often. But the price! £6 for a beer that's only 3.4 per cent in strength! Blimey! Very ordinary in quality as well. And given the fact that the pub (restaurant?) wasn't particularly busy, service was very slow. Not a good start to the evening.



Next was the longest walk of the night, over to Robinsons' **Queens** on Great Portwood Street. Mention must be made of the many hanging baskets outside the pub, giving a most colourful and attractive first impression. Inside, it was rather quiet. "In the evening, people tend

to come in at tea-time, or around 9 o'clock", said the chap behind the bar. One interesting feature is the raised area on the right hand side of the pub: wood panelling comes up to your shoulder when you're sat down, but fixed to the top of the panelling is frosted glass, Portwood's equivalent of a snob screen, perhaps. Two Robinsons beers were available, Unicorn and Dizzy Blonde, and both were pretty good.



Staying with Robinsons, we went on to the **Swan With Two Necks** on Princes Street, an attractive three-storey building with mock-Tudor windows (and more hanging baskets). It's an unspoilt classic, and is on CAMRA's National Inventory of historic pub interiors: it's quite narrow from the outside, just room for a vault and a bar corridor; but it goes back a long way from the pavement, with two further lounges (one with a very attractive skylight) and a pleasant beer garden at the rear. Three beers were available: Unicorn and Dizzy Blonde were joined by the seasonal Amo – the latter

tasted a bit off, but was changed without demur and a new cask put on instead. All three beers were good.

We had to make sure of a prompt arrival at the **Runaway Brewery Tap** on Astley Street, given the fact that last orders are around 9:30



and that it closes at 10pm (and only opens Thu to Sat). It's an attractive brick exterior, which would cost the owners a fortune if a new window tax were to be brought in. The décor of the main room is a little spartan – you may have visited

similar small brewery taps and micropubs where the tables seem to have come from a school dining room. The brewery itself can be seen through windows on the left-hand side. There's another room upstairs, and a largish outside area with its own pizza oven and a fine view of the viaduct. All the beers were Runaway's own: two cask offerings are usually available (although some of us were unfortunate enough to arrive just as one of them ran out!) and there's a large bank of taps for around a dozen key-kegs. Both the cask beers were very good, the pale Styrian Wolf being the pick of the night.



The final pub was the **Crown** on Heaton Lane, once the undisputed king of Stockport's free houses, but a place which has had a chequered recent history with several changes of licensee. It's an attractive place, famously in the shadow of the mighty viaduct, with a multi-



roomed interior. The beer choice isn't what it was: while there are about a dozen handpumps, only half of them are in use, and the beers offered tend to be more national than local. Having said that, as well as Fuller's London Pride as an example of 'national', a couple of Ossett beers

from West Yorkshire were available: Silver King (okay) and White Rat (rather good). There's an outdoor drinking area here too, perhaps to be ignored if you feel intimidated by being sat virtually underneath a very large brick structure ...

So, all in all a decent evening, none of the beer was bad, and most was pretty good. But the price of the Golden Best at the Midway – to repeat: £6!

Calling All Home Brewers

Competition launched for 2025 Beer Festival

Stockport & South Manchester Branch of CAMRA is again running a competition for local home brewers to find five beers for Bar Nouveau at next year's Stockport Beer & Cider Festival.

Bar Nouveau was introduced in 2015 and features brand-new beers launched at the festival. It's proved to be a very successful feature and we will be running it again next year (the festival dates are 19-21 June). There will be up to ten beers, all served on a separate bar and properly cooled to ensure optimum condition.



For the past few years, we have involved local home brewers and have been delighted by the response. As in past years, each of the five winners will have their beer brewed by a local brewery. The festival will purchase two firkins of each winning beer and the rest will be sold on to the market by the brewers concerned. If you are a home brewer, this is a great chance to join in a brew day at a local brewery, and also see one of your beers out there on sale to the public.

The brewers who have kindly agreed to host the winners are:

- * Marble Beers, Salford (Bitter, Pale Ale & Session IPA)
- * Sureshot Brewing, Manchester (ESB, Strong Pale Ale & IPA)
- * Runaway Brewery, Stockport (Speciality)
- * Steelfish, Manchester (Mild & Brown Ale)
- * Torrside Brewing, New Mills (Stout & Porter)

The five categories are quite broadly drawn so that you can use your imagination. Here's what we are looking for:

Mild & Brown Ale – this is a chance to take old beer styles and run with them. Maximum ABV 5.5%.

Bitter, Pale Ale & Session IPA – session ales, pale ales, brown, amber or blonde – the choice is yours. Maximum ABV 5%.

Strong Pale Ale, ESB & IPA – while we're not style fanatics, you should aim for a minimum ABV of 5%. Apart from that, it's up to you – brown, red, black or white IPAs are all welcome. Maximum ABV 6.5%.

Stout & Porter – again this is broadly drawn – added flavours and ingredients optional. Maximum ABV 6.5%.

Speciality – this is where you can really go to town. Saisons, bocks, Rauch biers – all are welcome. Note – all beers with lactose will fall into this category. Maximum ABV 7%.

A few things to bear in mind: although the beers will be judged from bottle, they will have to work as cask beers, so please do consider commerciality. We will be buying some of each brew for the festival, but the host brewers will have to sell the rest into the trade, so the beers will have to be commercially viable for them.

Please also note that we will be looking to ensure the entries observe the ABV limits for each category – a tiny amount of drift is OK but not huge overshoots.

How to enter – just email your name, contact details and which categories you want to enter to: stocam@btinternet.com. **The cut-off date for entering is 12 January (but we won't need details of actual beers until early February).** Judging will take place in late March/early April next year.

Pictured left – judging in progress this year at the Petersgate Tap in Stockport.

Winners Win!

As we reported in previous issues, this year's competition was rather dominated by Levenshulme Homebrew Club, whose members won four out of five categories. Not only that, but three of those beers went on to win Gold, Silver and Bronze in the Beer of the Festival competition.



They, and the host brewers, received certificates to mark their achievements. First to be presented was the Silver Award, which went to Will Shaddock and Adam Pierce, whose Imperial Dark Hempstress was brewed at **Torrside**. They are pictured here (left) with Torrside's Nick and Sarah Rothko-Wright.



The Gold and Bronze awards were presented on the same night at an event held at **Station Hop** in Levenshulme, which is run by **Blackjack**, brewers of Gold Award winner Nice One Cyril, and also happens to be the HQ of Levenshulme Homebrew Club.



Bronze first, and this was won by Mike Cunliffe and Enda Bradley, who brewed their King of the Mild Frontier at **Steelfish**. They are seen above, alongside Steelfish's Simon Goodier (right).

In the bottom photo, getting their Gold Award for Nice One Cyril, are Martin Parsons and George Lee (holding Cyril!) and Blackjack's John Seath (right).

Be part of the CAMRA story

Real ale is just the start...

Our story is your story. So join us in supporting everything from pubs, clubs and drinkers' rights, to licensees and breweries, uniting us in the story we all love.

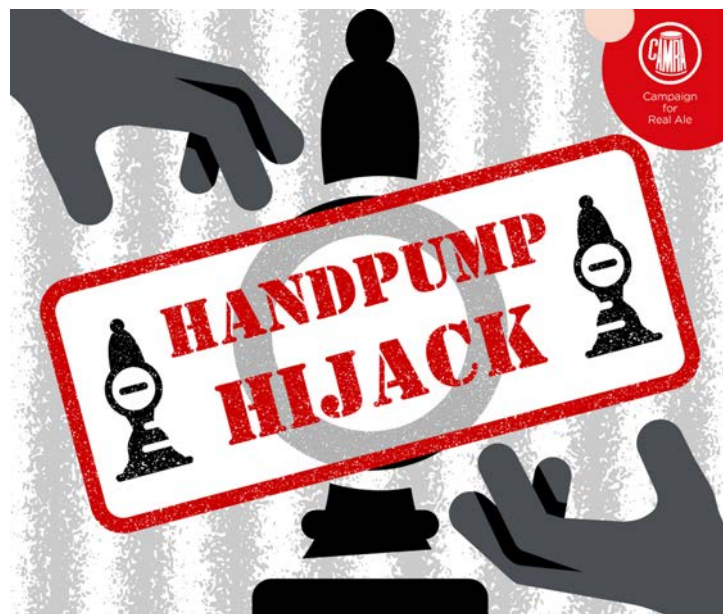
As a thank you for being a hero in our story, you receive great membership benefits, such as **£30 of beer vouchers**, quarterly **BEER magazine**, access to the online news platform **What's Brewing**, partner **benefits and discounts**... just a few perks of joining us.

Join the CAMRA story
camra.org.uk/join



Campaign
for
Real Ale

Real stories, real people, real ale



Campaign
for
Real Ale

ASK, "IS IT CASK?"

The launch of 'Fresh Ale' by Carlsberg Marston's Brewing Company (CMBC) is a handpump hijack, which misleads consumers into thinking they will be served a cask-conditioned beer - which is far from the case.

Serving so-called 'Fresh Ale' though a handpump also boots a genuine cask beer off the bar, depriving consumers of choice.

CMBC claim to champion cask beer but have instead closed breweries and removed cask lines from bars.

THE HOTTEST BEER FESTIVAL THIS WINTER

With Cask, Keg, Cider, Perry, Wine & Gin

GREAT BRITISH BEER FESTIVAL

WINTER 2025

MAGNA  

12-15 FEBRUARY 2025

MAGNA SCIENCE ADVENTURE CENTRE ROTHERHAM

WINTER.GBBF.ORG.UK

What's On

Local CAMRA Branch Diaries

Forthcoming events for the following local branches:

- * **Stockport & South Manchester (SSM)**
- * **High Peak, Tameside & NE Cheshire (HPNC)**
- * **Central Manchester (CMCR)**
- * **Macclesfield & East Cheshire (MEC)**

Formal Branch Meetings

CAMRA members only at these meetings.

Monday 11 November – Tapsters, 31 Old Street, Ashton-under-Lyne, OL6 6LA. Will be followed by the Pub of the Season presentation. Starts 7:30pm. (HPNC)

Tuesday 12 November – Peer Hat, 14-16 Faraday Street, Manchester, M1 1BE. Starts 6:30pm. (CMCR)

Thursday 14 November – Blossoms, 2 Buxton Road, Heaviley, SK2 6NJ. Guest speaker – Oliver Robinson. Starts 8pm. (SSM)

Tuesday 3 December – Farmers Arms, 79 West Street, Congleton, CW12 1JY. Starts 8pm. (MEC)

Thursday 12 December – Nursery, 258 Green Lane, Heaton Norris, SK4 2NA. Will include Christmas quiz with beery prizes. Starts 8pm. (SSM)

Social Events & Presentations

Friday 15 November – Winter Warmer Wander launch Stagger. Starts 6:45pm at Jack's Bar, 3 Hamnett Street, Hyde, SK14 2EX, then 3 Drinks Behind, Gee Cross; Steel Works, Bredbury and finishing Bakers Vaults, Stockport. (All)

Saturday 16 November – Social trip to Clitheroe. Catch 10:43 train from Victoria station. (HPNC)

Friday 22 November – Gatley & Cheadle West Stagger: 7:30pm Prince of Wales, Gatley Green, SK8 4NF; 8:30pm White Hart, 90 High Street, Cheadle, SK8 1PX; final pub James Watts, 13 High Street, SK8 1AX. (SSM)

Saturday 23 November – Disley Wander. Meet 12:35pm at Rams Head, SK12 2AE. (MEC)

Thursday 28 November – Pub of the Month presentation: Sun in September, 588 Burnage Lane, M19 1NA. From 8pm. (SSM)

Wednesday 4 December – Weekday Wander – collecting Winter Warmer Wander stickers in Stalybridge and Ashton. Meet 10:45 at Piccadilly Station for 10:58 train to Stalybridge. First pub: Society Rooms, 49-51 Grosvenor Street, Stalybridge, SK15 2LN. Full details on branch website. (SSM)

Saturday 14 December – Branch Christmas Party: Sportsman, 57 Mottram Road, Hyde, SK14 2NN. From 4pm. (HPNC)

Friday 20 December – Annual Stockport Hillgate Stagger: 7:30 Blossoms, 2 Buxton Road, Heaviley, SK2 6NU; 8:30 Sun & Castle, 54 Middle Hillgate, SK1 3DK; final pub: White Lion, 20 Great Underbank, SK1 1LW. Will also visit some Market Place pubs if time permits. (SSM)

Friday 27 December – Post-Christmas Social: Wharf, 107 Brook Street, Macclesfield, SK11 7AW. From 7pm. (MEC)

Saturday 28 December – 'Drown the Turkey' social: meet 1pm at Piccadilly Tap, Station Approach, Manchester M1 2GH. (HPNC)

Monday 30 December – Pub of the Month presentation: Blue Bell, 170 Barlow Road, Levenshulme, M19 3HF. From 8pm. (SSM)

Tuesday 7 January – Weekday Wander: Along Oxford Road, Manchester. See branch website for final details. (SSM)

CAMRA Awards

Recent Presentations



As we reported in the last issue, the Greater Manchester CAMRA Pub of the Year 2024 is the community-owned **Northumberland Arms** on Compstall Road in Marple Bridge.

The pub is small, but punches well above its weight. Small rooms help give a very comfortable feel to the inside. Outside, customers can sit in the garden, maintained by an enthusiastic gardening group, to the side of the pub, or under gazebos at the front. Five handpumps dispense regularly changing cask beers. Robinsons Unicorn is ever-present, but other beers of all styles appear on the beer list. A good selection of wines, sourced from a local supplier, is also available.

The award was presented in glorious sunshine on 31 August. Pictured above is pub manager Phil Jarvis (fourth left) receiving his award from High Peak CAMRA chair Ben Zwierink (second right) while local MP Lisa Smart (right), looks on.

The Stockport & South Manchester CAMRA Pub of the Month for August was the **Wobbly Stamp** on Stockport Road in Cheadle.

The 'Stamp' is now a popular meeting point for many locals, with a strong cask lineup and a varied keg selection. Four casks are made up of the regular Stancill Brewery Wobbly Best Bitter, plus three rotating guests: one dark, one pale and a stronger IPA. The high quality of the cask beers has made the pub a regular in the national *Good Beer Guide*. Co-owner Darren Shaw is pictured above with his certificate.



The Pub of the Month for September was **Ye Olde Vic** on Chatham Street in Edgeley. This former Wilsons pub reopened as a free house in 1983 and hasn't looked back. Characterful licensee Steve Brannan oversees a constantly changing lineup of guest beers in what is Stockport's first community-owned pub. Investment in the pub continues, but it has also become something of a local institution and attracts beer

lovers from both Stockport and further afield. Steve is seen here (right) with cellar man Andy Pugh with their certificate.

Tom & Berry

Back for November
& December!
4.4% Festive Ale



Available at selected
Robinsons Pubs

ROBINSONS



WWW.ROBINSONSBREWERY.COM

