

October 2011

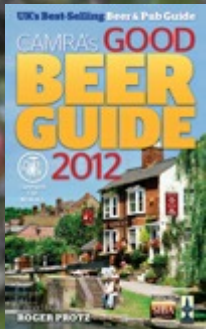
Opening

TIMES

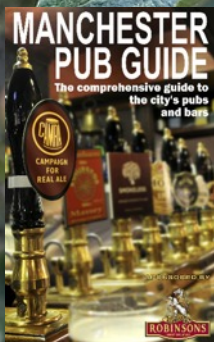
THE FREE CAMRA REGIONAL MAGAZINE

COVERING THE CITIES OF MANCHESTER & SALFORD, STOCKPORT, TAMESIDE, TRAFFORD, N.E. CHESHIRE & MACCLESFIELD

**Wassail! It's Cider Month –
Win prizes on our Cider
Circuit. See page 15.**



**Out Now – 2012 Good Beer
Guide. See Page 17.**



**Out this month – Manchester
Pub Guide. See Page 25.**

THE MAGNET



Pub of the Region 2011



14 Handpumps



Bottled Beers

Real Cider

Car Park

Games Room



Brew Dog Evening

Thursday 10th November at 8.00pm
Ticket only; £2 in advance from the bar
(to be donated to Kidneys for Life)



Opening Hours

Monday-Wednesday 4-11pm Thursday-Sunday 12-11pm



51 Wellington Road North, Stockport, SK4 1HJ
Tel: 0161 429 6287 www.themagnetfreehouse.com

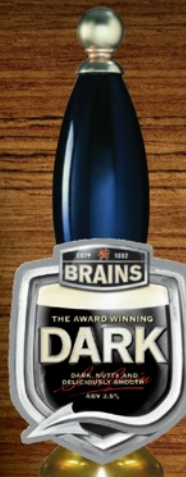
Famous Five



Perfection in a glass

The Brewery, Moorhouse Street, Burnley BB11 5EN
Tel: 01282 422864 • www.moorhouses.co.uk

OVER 600 OF THE
FINEST ALES SOLD
NATIONALLY AT
J D WETHERSPOON
FEATURING GREAT ALES SUCH AS



BRITAIN'S NO.1 SUPPORTER OF MICROBREWERIES

THE MANCHESTER & COUNTY

49 PICCADILLY, MANCHESTER
TEL: 0161 236 9206

THE MOON UNDER WATER

68-74 DEANS GATE, MANCHESTER
TEL: 0161 834 5882

THE PARAMOUNT

33-35 OXFORD STREET, MANCHESTER
TEL: 0161 233 1820

THE WATERHOUSE

67-71 PRINCESS STREET,
MANCHESTER
TEL: 0161 200 5380

THE FORD MADOX BROWN

OXFORD ROAD, MANCHESTER
TEL: 0161 256 6660

THE SEVEN STARS

THE PRINTWORKS,
MANCHESTER
TEL: 0161 817 2980

MARDI GRAS

THE ORIENT,
TRAFFORD CENTRE,
MANCHESTER
TEL: 0161 629 2130

Subject to local licensing restrictions and availability at participating free houses.

wetherspoon



CAMPAIGN
FOR
REAL ALE



Pub OF THE Month AWARD



The Stockport & South Manchester CAMRA Pub of the Month for October is the Fletcher Moss on William Street in Didsbury. Stuart Ballantyne is a fan of Didsbury's pubs and explains why it won.



TUCKED away on a side street off the busy Wilmslow Road the Fletcher Moss can easily be overlooked by visitors unfamiliar with Didsbury. Consequently the pub's main trade is with locals and it does not pander towards the transient student population.

Very much a community local, the pub supports local charities such as St. Ann's Hospice and Christie Hospital by hosting regular charity quizzes and acoustic music nights. The pub is everything a community pub should be; it doesn't feature gimmicks such as sport on TV, it is not a food driven operation and despite the introduction of local high profile competition, the pub has, if anything, become even busier. But how can this be you may ask?

It's all down to licensee Ken Mallion, his wife Lynn, deputy manager Mark and their team who make the running of a good pub look easy. Such is the quality of the service and the beers on sale that the Fletcher Moss now seems to be a perennial entry in the national Good Beer Guide. This year is no exception.

In addition to the regular three Hydes beers sold (Original, 1863, and Manchester's Finest) Hydes seasonal ale is also on sale. The Fletcher Moss has also very successfully introduced three guest beers and a traditional cider.

With record beer sales it will come as no surprise that the Fletcher Moss is to host its own beer festival featuring between 25 and 30 beers. This will take place from Thursday 6 to Sunday 9 October. If you want to dine whilst visiting the beer festival then why not try the Fletcher Moss paella which will be cooked in the beer garden on Thursday night? Also don't overlook the live solo artist who will be playing on Sunday night.

So for continued excellence, the introduction of an extended beer range and for just being a damn good local's pub the Fletcher Moss has won the pub of the month award for October. Why not join the CAMRA group for the pub of the month presentation on Wednesday 26 October when the pub is likely to be very busy. **Please note – the date of the presentation has been brought forward from the usual Thursday to Wednesday to avoid a clash with the Didsbury beer festival.**

A FAMILY BUSINESS

STEPHENSONS

Supporting The Catering Trade Since 1868


The Pub of the Month award is sponsored by Stephenson's, a local family firm that has been supplying the local pub and catering trade for over 140 years. Check out their advert on this page.

LOW PRICES!

A FAMILY BUSINESS

STEPHENSONS

Supporting The Catering Trade Since 1868




crockery • cutlery • glassware
bar sundries • clothing • kitchen equipment
cleaning • paper • disposables

Proud Sponsors Of
PUB OF THE MONTH!

Visit the Largest Catering Equipment
Cash & Carry In The North!
Find Us On the A6, Next To The Alma Lodge Hotel

161 Buxton Road, Stockport, Cheshire, SK2 6EQ

Customer Service Team: 0161 483 6256
Buy Online: www.stephensons.com



Proud to be a CAMRA National Pub of the Year 2008 finalist




The Crown Inn, Heaton Lane

16 Handpumps
Real Cider Guest Lagers Foreign Beers
Lunches Served
12 - 3pm Monday - Friday
Special Occasions Catered For

Folk & Acoustic night
every Tuesday from 8.30 pm
Come along and have a sing or strum

Open every day from Noon
<http://thecrowninn.uk.com/>

WE WOULD LIKE TO WELCOME YOU TO THE



REAL BEER. REAL FOOD. SERVED IN A REALLY NICE PUB

Offering a mix of cask ales including regularly changing handpicked guests, world lager selection and quality wines, discerning drinkers will undoubtedly be spoiled for choice.

For the best in freshly prepared flavoursome food the carefully constructed menu offers something for everyone featuring inspired pub classics such as Hand Battered Fish & Chips, a range of delicious Pies, Hearty Grills, not forgetting Sausage & Mash. On Sundays, diners will be able to enjoy a hearty Sunday Roast, as the chefs are committed to producing the freshest most succulent roasts around.

VOUCHER
33% OFF FOOD

Come and sample our new menu and receive 33% off your food bill. Simply complete your details below and hand to a member of staff when placing your order.

Name

Email Address

Mobile Number

Hydes Brewery would like to keep you informed of events, special offers and promotions taking place at the Sir Joseph Whitworth & 256 Wilmslow Road. If you do not wish to receive these updates then please tick here

Terms & Conditions:

1. Voucher valid until Sunday 9th October 2011.
2. 33% will be deducted from the value of your food bill.
3. Voucher can only be used once.
4. Discounts cannot be claimed in conjunction with any of the daily food offers, promotional offers & menus or privilege card discounts.
5. Management reserve the right to withdraw this promotion at any given time.
6. Promoter: Hydes Brewery Ltd, 46 Moss Lane West, Manchester M15 5PL.

Horse & Jockey

the inn on the green



9 The Green, Chorlton, M21 9HS
Tel: 0161 860 7794
www.horseandjockeychorlton.com



The jewel in the crown of Chorlton's thriving real ale scene in an idyllic village green setting, dating back to 1512.



Resident, seasonal and one-off brews from our in-house 4 barrel microbrewery, complemented by a sublime selection of local and national guest ales in constant rotation. Over 40 whiskies, and over 30 Belgian, German and world beers.



British cooking at its best - food served all day every day in the pub, and every evening from 6pm (all day weekends) in our newly extended restaurant.



THE CRESCENT

18-21 the crescent, Salford, Lancs
www.thecrescentsalford.co.uk
0161 7365600



CURRY NIGHT EVERY WEDNESDAY 1700-2000
CHOOSE UPTO 3 CURRIES FOR £5.00

Up to 9 Real Ales available

Up to 4 Real Ciders

Quiz night every Monday night for 21.30

Curry night every Wednesday night 5-8

Car park & beer garden to the rear of the building

Food served 7 days a week !!

Opening Hours:

Mon - Thurs:- 1200-2300

Fri & Sat:- 1200-2300

Sun :- 1200-2230

ELECTRIK

publicsocialhousecafebar

Some good reasons to come in for a pint:



Real Cider and Scrumpy from Bristol, Devon & the New Forest. Freshly prepared food to order
CAMRA pub of the season
& the coffee is very good too...

Electrik, 559 Wilbraham Road, Chorlton.
www.electrikbar.co.uk

Comment, Notes & Contents

What's On

Opening Times – Comment

Welcome to Cider & Perry Month. This is the time of year when the nation's craft cider makers are busily pressing their apple and pear juice. This will spend the next few months maturing and fermenting to produce the increasingly wide range of traditional ciders and perries that add interest to the bars of more and more pubs. Oh, and by the way – it's **always** perry and **never** pear cider.

With record sales at beer festivals, and more pubs selling the real thing, it seems that real cider and perry's day has come. Why not take part in our cider circuit – you'll visit a wide range of great pubs and bars, and get a chance to sample some fantastic drinks.

This month we also celebrate the launch of the 2012 Good Beer Guide. Look out for the Good Beer Guide logo on many of our adverts this month - these signify pubs that are in the new Guide and are all worth a visit.

Finally, we report this month on the shock closure of the Vale Cottage in Gorton. As ever it's a dispute between a successful licensee and a pub company. As ever, the pub company is Enterprise Inns. 'Nuff said'.

Opening Times - Information

Opening Times is produced by the Stockport & South Manchester Branch of CAMRA, the Campaign for Real Ale. Additional material is supplied by the High Peak & NE Cheshire, Trafford & Hulme, North Manchester and Macclesfield & E Cheshire Branches. The views expressed are not necessarily those of CAMRA either locally or nationally. 7,200 copies a month are printed by Phil Powell Printing of Failsworth. All articles copyright CAMRA unless otherwise stated.

News, articles and letters are welcome to the editorial address 45, Bulkeley St, Edgeley, Stockport, SK3 9HD. E-mail stocam@btinternet.com. Phone 0161 477 1973. Advertising rates on request.

Postal subscriptions are available at £9.00 for 12 issues (make cheques payable to *Opening Times*). Apply to *Opening Times*, 4 Sandown Road, Cheadle Heath, Stockport, SK3 0JF.

Trading Standards – for complaints about short measure pints etc contact Consumer Direct (North West). Consumer Direct works with all the Trading Standards services in the North West and is supported by the Office of Fair Trading. You can email Consumer Direct using a secure email system on their website (www.consumerdirect.gov.uk) which also provides advice, fact sheets and model letters on a range of consumer rights. Their telephone no. is 0845 404 05 06.

Copy Date for the November issue is Wednesday 12 October

Front cover – cider apples on the tree at Westcroft Cider

Contributors to this issue: John Clarke, John Tune, Dave Hanson, Peter Butler, Robin Wignall, Peter Edwardson, Frank Wood, Phil Booton, Jim Flynn, Mike Rose, Stuart Ballantyne, John O'Donnell, Alan Gent, Mark McConachie, Charlotte Bulmer.

Opening Times 326 - Contents

Pub of the Month	3	Good Beer Guide	17
Stagger	9	Curmudgeon	21
High Peak Pub Scene	11	Brewery News	23
Pub News	13	T & H Pub of the Season	25
Cider Presentation	14	Didsbury Beer Festival	25
Apple Day at the Vale	14	Manchester Pub Guide	25
Cider Circuit	15	Great Nothern Beer Fest	25

Local CAMRA branches organise regular events in pubs across the region – members of other branches & general public are welcome to attend except some Branch business meetings (contact branch contact if in doubt). Organising branch in brackets.

October

Saturday 8th – Stoke-on-Trent crawl. Details tbc. (MEC)

Wednesday 12th – Special Award for 20 years in Good Beer Guide; Lamb, Eccles. From 8pm.

Thursday 13th – Sale Moor & Sale Social: Carter's Arms 8pm, then Leigh Arms, Temple and finish Steamhouse / J P Joule (TRH)

Thursday 20th – Urmston Social: Tim Bobbin 8pm; Chadwick 8.40; Steamhouse 9.15. Finish Nelson.

Friday 21st – Stockport South & Hillgate North Stagger: 7.30pm Nelson, Wellington Road South, 8.30 Little Jack Horner, Lord Street. (SSM)

Saturday 22nd – Trip to Outstanding Brewery to present Beer of Festival Silver Award. Meet Bulls Head, London Road 12-12.30 then tram to Bury. Contact John Clarke on 0161 477 1973 (SSM)

Monday 24th - Bollington Crawl. Start Vale Inn at 7.30pm (MEC)

Wednesday 26th – Pub of the Month Award to the Fletcher Moss, Disbury. From 8pm. **Note change of date.** (SSM)

Wednesday 26th – National Cider & Perry Month crawl: Marble Arch 7.30pm; Angel 8.15pm. (NM)

Thursday 27th-Saturday 29th – Branch stall at Didsbury Beer Festival (SSM)

Tuesday 1st November – Pub of the Season Award to the Waterhouse, Princess St, Manchester. Starts 8pm. All Welcome. (TRH)

Wednesday 2nd November – Most Improved Pub Award: Wheatsheaf, Oak Street, City Centre, From 8pm. (NM)

Thursday 3rd – Volunteer Arms, Cross Street, Sale. Starts 8pm. (TRH)

Your Local CAMRA Branches:

SSM: Stockport & South Manchester www.ssmcamra.org.uk
Contact: Mark McConachie 0161 429 9356, mark.mcconachie@o2.co.uk

NM – North Manchester www.northmanchestercamra.org.
Contact: Dave Hallows 07983 944992, davehallows2002@yahoo.co.uk

HPNC – High Peak & North Cheshire www.hpneccamra.org.
Contact: Mike Rose 07986 458517, mikewrose@gmail.com

MEC – Macclesfield & East Cheshire www.eastcheshirecamra.org.uk
Contact Tony Icke 01625 861833, contact@eastcheshirecamra.org.uk

TRH – Trafford & Hulme www.thcamra.org.uk
Branch Contact: John Ison 0161 962 7976, enquiries@thcamra.org.uk

CAMRA Branch Business Meetings

Thursday 6th – Branch AGM – Timperley Taverners, Park Lane, Timperley. Start 8pm (TRH)

Thursday 13th – Olde Woolpack, Brinksway, Edgeley. Short meeting followed by tutored cider tasting. Starts 8pm. (SSM)

Monday 17th – Gun Inn, Holingworth. Starts 8.30pm. (HPNC)

Wednesday 19th – Kings Arms, Bloom St, Salford. Starts 7.30pm. (NM)

Thursday 10th November – Railway, Wellington Road North. Includes New Faces Event and talk by David Bremner, Robinsons Director of Marketing. Starts 8pm. (SSM)

THE ARDEN ARMS

23 Millgate, Stockport, SK1 2LX. 0161 480 2185



MEN City Life Pub of the Year 2008/9

www.arden-arms.co.uk. Email us at steve@ardenarms.com

*Joe & Steve warmly welcome you to the "Arden Arms".
The pub has a heritage interior with open fires in the winter &
a sunny courtyard outside for drinking & dining. We stock a
wide range of Robinson's cask ales & serve fine food & wine.*

*Open from 12 noon to midnight seven days a week. Lunch served from
noon till 2.30pm in the week & noon to 4.00pm at weekends*

Jazz Night is Monday from 8.30.

Charity Quiz in aid of St Annes Hospice at 9.30 Tuesday

Our 2011 Christmas Menu is now available.

Please phone or email us for your copy or visit our website

*COMING SOON: From January 2012 we will be serving food
in the evening. Please contact us for further details.*



HYDES
THE MANCHESTER BREWER
ESTD 1863



CAMRA GOOD BEER GUIDE 2012 WE'RE IN IT!



THE FLETCHER MOSS

1 William Street, Didsbury,
Manchester, M20 6RQ.
Telephone: 0161 438 0073



THE FRIENDSHIP INN

353 Wilmslow Road, Fallowfield,
Manchester, M14 6XS.
Telephone: 0161 224 5758



THE NURSERY INN

Green Lane, Heaton Norris,
Stockport, SK4 2NA.
Telephone: 0161 432 2044

The Waters Green Tavern

Local CAM-
RA Pub of
the Season
Winter '08



96 Waters Green,
Macclesfield,
Cheshire SK11 6LH
Tel 01625 422653



Ever Changing Guest Beers including:
Pictish, Off Beat, Whim, Oakham, Phoenix,
Acorn, Kelham Island
and many more.

Your Hosts, Brian and Tracey

Bar Meals Served Mon to Sat Lunch

This **is** not a free house

Church Inn

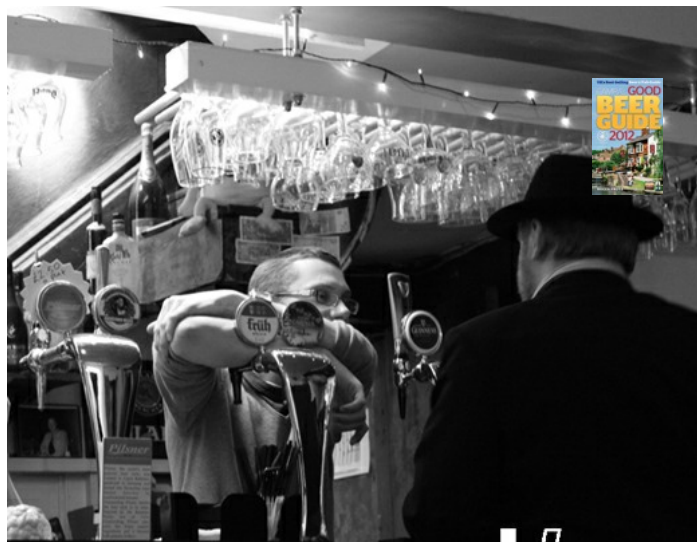
90 Ravenoak Road, Cheadle Hulme, SK8 7EG

"A superb country-style pub
in an urban setting"

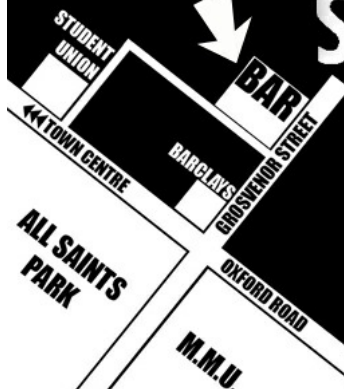
Robinsons Hatters, Unicorn
and Seasonal Beers

Excellent food in
Edwardo's Restaurant
open until 9.30 Monday to Saturday
Sunday 12 - 7.30 - £10.95 3 Courses

Telephone 0161 485 1897



sandbar



120
grosvenor street
all saints
manchester
m1 7hl



THIS MORNING
OUR BREWER WAS UP
AT 2AM
SITTING NEXT TO THE
FERMENTER
LIKE A PROUD FATHER.
HE DOESN'T DO IT FOR THE
FAME
THE GLORY
AND CERTAINLY NOT THE
MONEY
IT'S HIS PASSION.



THE BOLLINGTON BREWING CO.

CASKS • BOTTLES • BOXES
WWW.BOLLINGTONBREWING.CO.UK

DRINK.

SOUP KITCHEN
CANTEEN CAFE CELLAR BAR

Two casks always on with
one from local breweries
Pint of any cask and Soup or
Sandwich for £5

Weekend Cellar Bar now open
Friday & Saturday
evenings with two more casks,
Phoenix Pilsner
and 2 Belgium beers on draught

Coming soon:

October Ale Festival
6th-9th October
6pm-very late Thurs & Fri
(Entertainment
Provided)
12pm-8pm Sat & Sun (Families
Welcome, under 18's free)
£3/£1 CAMRA each session

10+ Casks all from
Greater Manchester
Breweries
+ Special
Edition
Greater
Manchester
Kegs
+ Imported
Oktoberfest
Kegs TBA
+ Vastly Extended
Bottle Conditioned
Range

All enquiries info@soup-kitchen.co.uk



31 - 33 Spear Street
Stevenson Square
Manchester
M1 1DF



What's On at the Victoria

WITHINGTON'S FAVOURITE LOCAL

MONDAY - 10% Discount on all Hydes Beers & Harp Lager

WEDNESDAY - Buy 2 large (250ml) glasses of wine and
receive the rest of the bottle free - after 6pm

Offer applies to selected wines only

THURSDAY - All cask ales only £2.19 a pint - all day

Quiz Mania every Thursday from 9.30pm
- including 'Open the Box'

Free entry, drinks offers plus a gallon of beer
for the winners!

FRIDAY - Live Entertainment

PLUS...

Fantastic cask ale range with a choice of 8 beers & ciders



Enjoy all your favourite live **SKY SPORTS** here



438 WILMSLOW ROAD, WITHINGTON, MANCHESTER, M20 3BW
Tel: 0161 434 2600

Email: victoria@hydesbrewery.com Follow us on Facebook (The Victoria)

THE 4TH ANNUAL

DIDSBURY BEER FESTIVAL

LOCAL & REGIONAL BEERS, CIDERS & PERRIES

27 - 28 - 29 OCTOBER 2011

ST. CATHERINES SOCIAL CLUB
SCHOOL LANE, DIDSBURY MANCHESTER, M20 6HS

THURSDAY 27th OCT 7pm - 11pm | ENTRY £3

FRIDAY 28th OCT 6pm - 11pm | ENTRY £5

SATURDAY 29th OCT 12pm - 5pm | ENTRY £3

SATURDAY 29th OCT 5pm - 11pm | ENTRY £4



CHARITIES BENEFITTING
WOOD STREET MISSION
CORNERSTONE

WWW.DIDSBURYBEERFESTIVAL.ORG.UK

THE ANDREW ARMS



COMPSTALL SK6 5JD

Tel: 0161-484-5392

HOME OF GOOD FOOD & FINE ALES

Separate Dining Room

Spacious and Secluded Beer Garden

Tuesday night: Chippy Night

Thursday: Quiz + Play Your Cards Right

Friday Night: Steak Night Special
(Full Menu always available)

To reserve your table: ring 484-5392

YOU'LL BE SURE OF A VERY
WARM WELCOME
AT THE ANDREWS!!

Stagger...

Hazel Grove

With Jim Flynn

APPROPRIATELY the sun was out when we got to the **Rising Sun**, conveniently next to the 192 bus terminus. The exterior of the building is impressive with its mock Tudor black and white frontage. On the wall is a plaque proudly proclaiming the history of this coaching inn dating back to 1754 which tells of bear and bull baiting. Nothing like that was going on on our visit but rather we were greeted by the friendly licensee (a feature of the better pubs on this stagger). The inside of this hostelry has changed beyond recognition since the days described on the plaque and it's now a well appointed, relaxing but largely featureless open planned pub with an L-shaped bar. There were four beers available Deuchars IPA, Caledonian Nectar, Theakston's Bitter and Wells Bombardier. We tried the first two, finding them to be in reasonable nick, although the Nectar was a little too sweet for some.

We headed to the **Bulls Head** where I was prevented from entering as I had shorts on; after all it's well known that the average hooligan likes nothing more than showing off his bare legs as a prelude to a night of wanton violence. I needn't have worried, none of their five handpumps were in use. From then on we found a string of bars; **Lounge, Ba-One** and **Browns** but none had cask ale until we reached the **White Hart**. This is one of the area's most improved pubs with a well decorated and comfortable lounge area with red plush seating (it nevertheless still bears some of the scars inflicted by Robinson's unfortunate 1970s design team). To the rear is a pleasant drinking area. We were again welcomed by an amiable licensee who pointed out the large photos of aircraft on the walls, memories of his time working at British Aerospace and the new handpumps. Both the Unicorn and the Hatters were a significant improvement on previous staggers and like our first port of call this is worth a visit these days.

On past another non-cask bar, **Huffies** (despite the handpump) to the area's newest pub, Wetherspoon's **Wilfred Wood**. This welcome addition to the district was absolutely packed and it wouldn't be an exaggeration to suggest that there were probably more customers here than in all the other places we visited put together. That did not stop the manager having served us from coming from behind the bar to briefly welcome us to her pub. The beers available in addition to the usual Ruddles and Abbot were White Horse Giant Star, Moorhouses Pendle Witch, Titanic Sundial and George Wright Brewers Revenge as well as a choice of ciders. It was standing room only as we drank our beer (which we found to be on good form) next to a metal

sculpture of an anvil commissioned from Stockport's own blacksmith, Luke Lister to commemorate Hazel Grove's past as Bullock



Smithy. It was very difficult to see much more of the pub except to say that it's a standard medium sized Wetherspoon's one room affair which looks to have an outside drinking area near the back which seemed closed off.

By now the heavens had opened and we had to leg it to the **Grapes** where we were greeted by the ever friendly licensee and staff as we dripped onto the lounge carpet. This has got to be one of the most charming, warm and welcoming pubs in the borough and very much recommended. The lounge is split into three areas and on the other side of the bar is the vault. At the rear is a very pleasant drinking area but given the weather we declined to venture outside. Both the Robinson's Hatters and Unicorn were in excellent form and it might be an idea for the brewery to take a few of their other local licensees for a bit of cellar training here because after this things deteriorated.

Next door is the **Three Tunnes**, another pub with a mock Tudor exterior (given the weather I declined to study it in any detail). Robinson's were refurbishing and apparently opening out the pub at the time and therefore it was both difficult to see much of the interior and pretty pointless to comment much here. The one feature of note still visible was a large black traditional fireplace with what looked like a built in bread oven. The Unicorn and the Hatters were average or below but again given the upset in the pub at the time this may not be a fair reflection going forward.

Opposite is the **Horse and Jockey** which having flirted with real ale is now keg only. A number of our party now left and what a wise move this was because our next stop was the **Cock Hotel**. There was no mistaking it was disco night as the noise from the largely empty back room greeted us on entering. There were relatively few customers so we were able to sit in the least noisy room, the low beamed room behind the bar. Then we tasted our beers! The Hatters was truly awful and I would have asked to swap it for Unicorn only to be told that this beer was only marginally better. The beer in many Robinsons houses has improved immeasurably but here they need to do

something quickly. I was so keen to leave I must admit I wrote very little about the pub itself.

Across the road is the **Bird in Hand** which had a board outside from Robinsons proclaiming the lease to be available. There was karaoke on and although there is only one L-shaped room it was quieter than across the road and my brain was attentive enough to notice all the pictures of old Stockport on the walls. There were four handpumps dispensing Unicorn, Hatters, Dizzy Blonde and increasingly rare Old Stockport. I chose the latter but soon wished I hadn't and others chose the Dizzy Blonde only to find it had run out and so drank the Unicorn which was little better. The beer here was an improvement on the Cock but nevertheless they might be best to reduce the beer range to improve on quality.

For what is traditionally the end of the stagger we deviated off London Road, down Commercial Road to another Robinsons house the **Royal Oak**. Other than perhaps the Wetherspoons this was probably the largest pub of the stagger and probably due to its size it seemed empty in comparison to some earlier pubs. The dominant feature of this multi roomed 1930's pub is the wood panelled staircase next to which was a karaoke (this



wasn't as loud as the Bird in Hand's and the singers were better). To the rear is a large games room and on the other side of the bar is another room which seemed to be shut on our visit. For the first time in a while we were greeted by a friendly enthusiastic licensee and surprise, surprise the Hatters and the Unicorn were on very good form (could the two be connected?).

Back on the A6 the next three pubs are due to be demolished to make way for the new ASDA. The unlamented Grove and Woodman were shut but the **Anchor** was still open so we decided to end the stagger here. As you would expect the pub had a nautical theme to its decor with pictures of ships adorning the walls. The Unicorn was served from an electric pump and was not a bad pint.

This was a stagger of mixed quality to say the least from the excellent to the terrible and yet Robinsons featured in both categories which shows the difference a good licensee can make. Give it a try and find out for yourself.

SSM CAMRA Pub of the Year 2010

The Railway

Good Beer & Good Cheer

Joseph HOLTS
+ 4 changing GUEST ALES

1st Thurs - Trad Jazz

Friday - Open Mic Nite

Sunday - Jazz Nite

Darts Teams **Wednesday -**
Stockport Pub League **Tango Poker**
Mixed - Mon **League**
Mens - Tues
Ladies - Wed
Lancashire Super League - Sun

For more information see www.nwjazzworks.org/manchester

74 -76 Wellington Rd North, Stockport SK4 1HF
Tel: 0161 477 3680

Elaine and George Welcome You To

Grapes



London Road, Hazel Grove 483 4479
Robinson's Unicorn and Hatters

Opening Hours
11.30am - 11pm (Midnight Fri/Sa)
12 Noon - 10.30pm Sunday

Beer Garden

'A Classic Town Pub'



The Deansgate



321 Deansgate, Manchester

4 cask beers including guest ales
Home cooked food every day 12 noon - 8pm

Roof Bar **Function Room**
and Terrace **for Hire**

Open 12 - 11 Sunday to Thursday
12 - 2am Friday & Saturday

Telephone 0161 839 5215

HOME OF ENGLISH FOOD

AND REAL CASK ALES

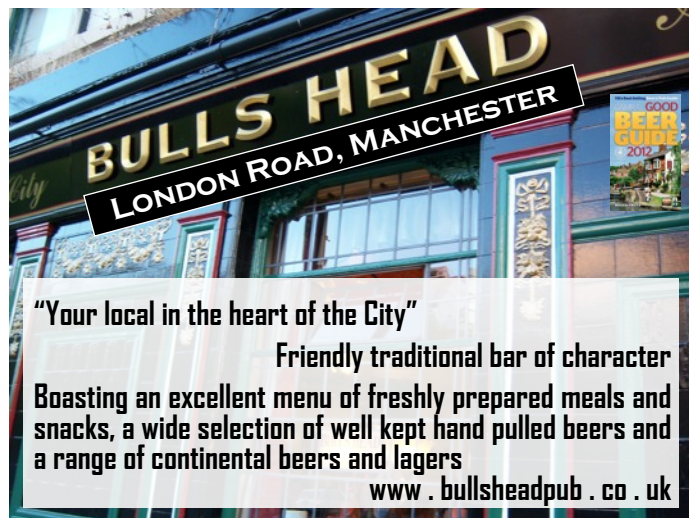
Banks of the Irwell,

Opposite Peoples History Museum

Stanley Street, Salford M3 5EJ

Phone : 01618324080

www.markaddy.co.uk



"Your local in the heart of the City"

Friendly traditional bar of character
Boasting an excellent menu of freshly prepared meals and
snacks, a wide selection of well kept hand pulled beers and
a range of continental beers and lagers

www.bullshheadpub.co.uk

High Peak Pub Scene

Frank Wood with Pubs News from High Peak & North East Cheshire CAMRA plus Robin Wignall's monthly round-up of the Peak District Pub scene

High Peak Pub News

With Frank Wood

THE **Centurion** at Melandra Castle Road, Gamesley, has been re-opened by owners Hydes after several months of closure when rumours abounded that it had closed its doors permanently. It is one of only two Hydes pubs in the Glossopdale Valley, so is worth supporting to keep the brewery alive in the area.

In Charlesworth, both the **Grey Mare** and the **George & Dragon** are open all and every day whenever I pass but the **Hunters** at Chisworth looks doomed. This Robinsons pub has been closed for some time and recently, the pub sign was taken down, which seems to give further clues to its future.

On the same road, further towards Marple Bridge, the **Rock Tavern** has also been closed for some time. More clues here too, as in recent weeks, builders have been active in the daytime and in mid July, a big placard has been erected temporarily, stating it will soon re-open as the Jodhpur Lounge, a restaurant and bar. Of course, the former Good Beer Guide pub the **Lane Ends** has been shut for around a year now but the **Travellers Call** across the road (Robinsons) seemed active enough when I called in on a recent mid evening.

Down into Marple Bridge then and the **Windsor Castle** had Unicorn and Hatters when I called in recently and the landlady Jo, informed me that she was indeed a CAMRA member and was proud of her beer being kept in top form, as it was that evening.

The **Sportsman** in Strines has been in the Good Beer Guide for some years now and it rarely disappoints. On my recent visit the five handpumps were all in use as ever, dispensing Tatton Blonde, Saddleworth Honey Smacker, Phoenix Arizona, Allgates Ahtanum and Hornbeam Old Peg. Various of the beers were tried by the group and all were in good form.

By the time you read this edition of Opening Times, Pugh and Co. will have auctioned off several pubs in our area as follows: **Stamford Arms**, Denton Road Audenshaw, **Oddfellows Arms**, Moor End Road Mellor (a former Good Beer Guide regular entry and advertised as suitable for conversion to a dwelling!) and the **Royal Oak**, Huddersfield Road, Millbrook. This small paragraph is becoming a regular feature of our Branch notes - unfortunately. However, do not despair as there are gains too in our areas, with a sprinkling of pubs in our area that have opened in the past few years such as the **Robert Sheldon** in Ashton, **Wrens Nest** in Glossop, **Nats Kitchen** in Buxton and the **Fallow Deer** at Chapel en le Frith, all selling food as their primary function but real ale features in them too.

Whilst on positive notes, some of our more enterprising pubs in the High Peak part of the Branch area have held very good beer festivals in the later Summer months, with the **Dog & Partridge** at Bridgemont, the **Devonshire Arms** at Peak Forest, **Dove Holes Cricket Club** (alongside the annual jazz festival), the **White Lion** at Disley, the **Swan** at Kettlethulme and the **Old Hall** at Whitehough. I called in at all of these and they were all great successes in their own kind of way. I particularly enjoyed the White Lion and the group that played on the Saturday evening for the National Winter Ale Festival in January.

Out in Holmfirth

FINALLY, just out of the Branch but in the Dark Peak area, the beer festival at the **Nook** in Holmfirth over the August Bank Holiday was as good as ever, and their own Nook beers, brewed in a mini tower type brewery at the rear of the pub, are very moreish. They continue to increase the range they brew and are delivering in quite a wide area as well as devoting several handpumps to their own beers in the Nook pub. The five barrel plant is compact but very efficient and joint owner Sheila was happy to show a small party round whilst we were there, which was the icing on the cake for me after a mornings walk over the hills of Ogden Moor, Snailsden Moor and down through Hade Edge into the little "Summer Wine" town. Also whilst in the village, the large off-licence that opened around a year ago in the new set of shops on the main road through town, dispenses local beers from 4 handpumps at the bargain price of £5.00 for a 4 pint carryout, though you have to purchase the plastic carryout on the first occasion you go in....now I am not getting drawn into the debate of whether to drink at home or in the pub, simply relaying information in case you are travelling through. Personally I would prefer to nip down to the off licence for a carryout of freshly pulled real ale, rather than buy a case of Carling or some such from the local supermarket but you the reader can make your own mind up on this issue.

Peak Practice

With Robin Wignall

THE front page of August's Opening Times looked forward to Beer Festivals during the August Bank Holiday weekend. There were obviously more festivals around the OT circulation area than most people would get to. I managed to visit the **White Lion** at Disley and the **Dog & Partridge** at Bridgemont, Whaley Bridge. Even so I missed out the festival which I understand took place at Hope in the Hope Valley, and the bash at Heaton House Farm at Rushton Spencer, in the south west of the Peak District. This latter is an annual event, advertised in *Out Inn Cheshire* and *Potters Bar*, local quarterly equivalents of OT for the

Cheshire and Potteries branches of CAMRA respectively.

The White Lion festival promised 20-plus beers at any one time, either in the Bar, or out in the marquee, with a list of over 50 beers to last the weekend. With beers from the north of Scotland to Cornwall and from Wales to East Anglia, there was certainly something for everybody's taste. Of the beers that I tried all were in good form, but Springhead The Leveller and Kirkby Lonsdale Monumental were my choices. The first was described in the brewer's tasting notes as having a 'dark, smoky intense flavour, with a toffee finish. Brewed in the style of Belgian Trappist ales.' This claim is a little extravagant for a beer of only 4.8%. The Monumental was a golden coloured ale, and easily my choice of paler beers.

The Dog & Partridge at Bridgemont has held an August Bank Holiday Beer Festival for several years now. 20-plus beers were available over the weekend with a changing range in the main bar and a list of 16+ out in the beer tent. Most of the beers were from fairly local microbreweries, Buxton, Storm, Wincle, Beartown and Greenfield. A new one to me and not quite so local was Cross Bay from Morecambe. There were also beers from some of the Marston subsidiary breweries. I enjoyed both Dusk and Nightfall from Cross Bay, but my choices for the afternoon were both from Greenfield, with Summer Ice as a pale beer, and Ale and Hearty as a darker brew. There was live music during some of the sessions, and this included a very good rock/pop trio, Eddie and the Elderly Brothers. Both the White Lion and the Dog & Partridge are Enterprise Inns, sourcing many of their beers from the company's SIBA list. Between them they created a good choice of good beer for the weekend, and helped to keep the 199 bus on the A6 busy as festival goers moved from one pub to the other. Look out for these two festivals next August Bank Holiday Weekend.

The first weekend in September saw the beer festival at the **Swan** in Kettlethulme. This was busy on Saturday afternoon despite there being little obvious publicity. Again there was a changing range of beers in the main bar, including Storm PGA. The festival bar set up in an outbuilding had beers on hand pump and gravity. The beers were mainly from microbreweries across northern England. Red Willow (Sutton, Macclesfield) Wreckless and Buxton Wild Boar IPA were my choices of normal premium beers. Thornbridge Geminus was in a category of its own. This is another beer festival worth noting for next year, presumably over the first weekend in September.

And of course by the time you read this, many of you will have enjoyed the festival at the Old Hall at Whitehough, Chinley during the last weekend in September.



Specialists in Guest Ales
& CAMRA approved
traditional Ciders
01422 310 311

WEEKLY DELIVERIES

Rotating guest ales & ciders every month – at least 30 per month



OCTOBER: Banktop • Blacksheep • Blackhole • Bradfield • Bridestones
Copper Dragon • Cuerden • Elland • Empire • Little Valley • Mollinsons •
Prospect • Redscar • Saltaire • Springhead • Thwaites • Wentworth •



Burrows Hill • Broadoaks • Bridge Farm • Gwenty Ddraig • Dove Syke
Hecks • Moorlands • Olivers • Orchard Pig • Ross On Wye • Ribble
Valley • Sandfords • Tomos Watkins • Tumpy Ground • Wilkins • Westcroft

Please call for stock availability

01422 310 311 / info@beverageexpress.co.uk

or your local rep Mike Hodgson: 07950 026 002

www.beverageexpress.co.uk

The Sportsman FREE HOUSE

Good Beer, Good Food, Good Company

Up to 5 Real Ales on Tap at All Times

**Beautiful
views across
the
Goyt Valley**



**Food served from
Mon-Sat 12pm - 2pm, 6pm - 9pm
Sunday 12pm - 8pm**



Joe & Sue Stockton

105 Strines Road, Strines, Stockport SK6 7GE

Tel 0161 427 2888

Visit our web site www.the-sportsman-pub.co.uk

Pennine

Pennine Ale (Rossendale) Limited, The Griffin Inn, 84-86, Hud Rake, Haslingden, Lancashire BB4 5AF;
Telephone: 01706 21 40 21; Fax: 0871 247 3484; www.rossendalebrewery.co.uk

THE ROSSENDALE BREWERY

Contact Robin: 07709 874 783; robin@rossendalebrewery.co.uk
Or Geoff: 07816 912 794; geoff@rossendalebrewery.co.uk

Meet our beers - Beer Tasting Notes

 <p>Floral Dance 3.8%</p> <p>A pale and fruity session beer, with body that is more than a match for many stronger beers!</p>	 <p>Hameldon Bitter 3.8%</p> <p>An unusually dark traditional bitter, with a dry and assertive character that develops in the finish.</p>	 <p>Glen Top Bitter 4.0%</p> <p>A citrusy, full bodied, pale beer. Intentionally not over hopped with quite a dry after taste.</p>	 <p>Rossendale Ale 4.2%</p> <p>A malty aroma leads to a complex, malt dominated flavour, supported by a dry, increasingly bitter finish.</p>	 <p>Halo Pale 4.5%</p> <p>A citrusy, pale ale brewed with Cascade aroma hops, finishing with a slightly bitter aftertaste.</p>	 <p>Pitch Porter 5%</p> <p>A full bodied, rich beer with a slightly sweet, malty start, counter-balanced with sharp bitterness and obvious roast barley dominance.</p>	 <p>Sunshine 5.3%</p> <p>A hoppy and bitter golden beer with a citrus character. The lingering finish is dry and spicy.</p>
---	---	--	--	---	--	---

Please do not hesitate to contact us for further info!

All of our beers can be sampled at -
The Griffin, 84-86, Hud Rake, Haslingden Lancashire (Brewery Tap) - 01706 21 40 21
The Sportsman, 57, Mottram Road, Hyde Cheshire - 0161 368 5000
www.rossendalebrewery.co.uk

All of our beers are suitable for Vegetarians & Vegans.

Pub News



Vale Cottage Closes

In a shock development the popular **Vale Cottage** in Gorton has closed following a lease dispute between licensee John Smith and owners (almost inevitably) Enterprise Inns. To say this is a tragedy is something of an understatement as the Vale Cottage was easily the best pub in the area and sold consistently good beer, making it almost a fixture in the Good Beer Guide. "Do not miss this hidden gem" says the new edition – sadly it seems we will all be missing it from now on. Thanks Enterprise.



Tiviot Saved

There is better news about this Stockport institution. There have been fears for the pub's future when the upper floors were declared unsafe.



Indeed at one stage it was predicted that the pub would be closing for good this month. However owners Robinsons have risen to the rescue and are undertaking the work to make the pub safe. Dave and Jill have declared themselves "very pleased indeed" with the happy outcome which secures the pub's future. In five years' time the pub will have been in Dave's family for 50 years – a remarkable achievement.

Crown, Heaton Moor

Licensee, Stuart Davies has been at the helm of Punch Taverns' **Crown** in Heaton Moor since mid-July now. Stuart is from north Wales, he started life in the military, but has been in the pub trade for a good number of years now, latterly spending seven years in London. His aim is to keep the status quo at the Crown, by maintaining a tidy and well-ordered house. As it is primarily a drinks-led pub, Stuart has been using Punch's "Finest Cask" range to supply guest beers at fortnightly intervals. These will supplement the other four regular beers - Boddies; Copper Dragon Golden Pippin; Wells Bombardier; and Marstons Pedigree. We wish him well.



Meanwhile over in Heaviley, the **Duke of York** (Robinson's) having had a nice redecoration, it is sad to report that it no longer sells any

cask beer! At one time it sold Unicorn, now however even that is gone. The barman even told our reporter to go to the **Blossoms** if he wanted cask! – not a bad idea as under the stewardship of temporary manager Eric Mills, the Blossoms goes from strength to strength.

Star Shines

Welcome to the new tenants at the **Star** in Cheadle: Tony Howie and his partner Bonnie took over in August. Tony has been in the trade for 20 years, most recently at the Sundial (a free house) near Settle and before that in Wrexham and Burscoe. He says his beer will be "second to none" (it's certainly very good as I write a week after his arrival); he intends to re-establish the Star as a drinker's pub, putting it firmly back on the real ale scene, increasing the number of beers, on draught and bottled, and introducing Cheadle's first real cider. There'll be live music on Sunday afternoons (folk and Irish) and a mini beer festival is planned



Chorlton Update

Chorlton's **Horse & Jockey** has expanded its range of traditional ciders and perries, with customers now having a choice of three to select from blackboards at the end of the bar - the blackboards forming part of a custom made housing for the increasingly popular "bag in a box" dispense.



The **Nook**, opposite Chorlton Tram stop on Wilbraham Road has recently refurbished its downstairs room "The Cranny" in a 1930's speakeasy style. The Cranny opens on weekend nights offering a quiet sanctuary from the busy upstairs bar, including a new bar with one real ale pump (in addition to the two upstairs) and real cider from the Natural Cider Company. Wells & Young are the main ale suppliers with guests coming from Titanic, Hornbeam or Nook Brewery.

City News

Cask bar on Liverpool Road in the City Centre has yet again expanded its range of handpumps. Despite the name, Cask originally had only one handpump, later expanding to two, then three. A fourth has now been added giving the option of a permanent cask cider alongside three cask ales, almost always featuring local breweries. Also in the City Centre, cask ale has been introduced at

The Old Grapes with Timothy Taylor's Landlord & Black Sheep Bitter on the bar. The pub on Little Quay Street in the shadow of The Opera House was famed for being part owned by Coronation Street's Vera Duckworth, aka actress Liz Dawn. Although the actress sold her interest in 2010 after ill health forced her retirement from the soap, the pub is still adorned with countless images from her long career.

Just over the border in Salford, the **Mark Addy** has increased the number of handpumps to six. There is a house beer brewed by RedWillow Brewery plus five ever changing guest beers all from micros – Shaws Vanilla Stout was notably good when OT called recently. Staying in Salford, the **Crescent** is running themes across its guest beer range over the coming months. This month West Yorkshire will feature, followed by Northumberland in November and Liverpool for December.

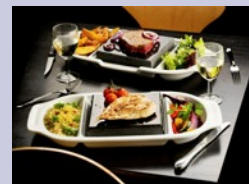


Bridge, Altrincham

Altrincham's Bridge Inn finally gave up its fight against closure in late August. Although an administrative error delayed the enquiry into the building's compulsory purchase by the local council, with the building's owners making it clear they had no intention of keeping the pub, landlord Lee Rawlings finally closed the doors for good on one of Altrincham's few remaining traditional public houses. Lee continues to run Sale's Ryans Bar.

Duke of York, Romiley

The pub is thriving following its takeover by Tracey and Grant Derbyshire who previously ran the Friendship up the road. They brought with them manager Claire Martin and the professionalism of the whole team shines through in the new operation.



Grant is a cask ale fan and the range now comprises Wells Bombardier and John Smiths Bitter as regular plus a range of changing guest beers. The response so far has been "overwhelming" Tracey told OT.

Not only is the beer good and varied but so is the food. Of note is the introduction of Black Rock where you cook your steak on a bed of hot volcanic rock (pictured). Reaction has been very favourable – review to follow in a future issue.

THE STAR INN

2 HOWARD STREET, GLOSSOP
TELEPHONE 01457 853072

CIDER FESTIVAL

FRIDAY 28TH OCTOBER

TO

SUNDAY 30TH OCTOBER

OPENS MIDDAY EACH DAY

8 CIDERS & 3 PERRIES
(WHILE STOCKS LAST)

USUAL VARYING RANGE OF
GASK ALES ON MAIN BAR



WE ARE NEXT TO THE
RAILWAY STATION



BIER CELL

SPECIALIST BEER EMPORIUM

Opening Times

WEDNESDAY & THURSDAY 4pm - 7.30pm

FRIDAY & SATURDAY 1pm - 7.30pm

34b greenwood street, altrincham, cheshire WA14 1RZ
tel: 0764 280 9354 - email: biercell@talktalk.net - www.biercell.co.uk



Cider Presentation

In July the Greater Manchester Cider & Perry Festival had a presentation night in the Railway (Portwood). The award for "cider of the festival" went to Gordon Battersby of Stockport's Madhatters Cider for his "Nine Holes".

It was a great night with cider tasting from the cider range from Madhatters and a fantastic buffet from Sue Hitchens the landlady. It was the first cider and perry only festival in Manchester and also the first award for Madhatters so it looks good for the region as it's not known for cider and perry. Pictured below – Gordon Battersby (right) receives his award from Mike Gilroy who, along with Dave Preston, is one of the Stockport & South Manchester CAMRA Cider reps.



Apple Day at the Vale

Along with beer brewing last year at Bollington Brewery they also made a Cider which has just been released after 12 months. An Apple Day was held at the newly refurbished Vale on 1 October.

This involved people coming along to the apple pressing day and either getting involved or just watching. Anyone who helped got a voucher for a free pint of cider which they can redeem when the Cider is done. If demand was high a second day was planned for two weeks later – so contact the pub to see if this will take place.

The Bollington crew also encouraged people to bring along their own apples which they could press and take away to drink or make Cider themselves.

APPLE DAY



Saturday 1st October

APPLE PRESSING DAY

help us make real local cider and receive a voucher to redeem when its ready, or

BRING YOUR APPLES & SOMETHING TO PUT JUICE IN

and we will provide the press and equipment for you to make your own apple juice or cider and its all free

10am to 4pm

@VALE INN
www.valeinn.co.uk


THE BEER SHOP,

Thanks to all CAMRA members and others who supported our licence application by emails, letters and personal representations to councillors; we could not have succeeded without your help.

We are looking for part-time and full-time staff; please apply in writing to dean@sat3pm.com only.

Opening date and other info to be announced on our website www.ukbeershop.com

The Beer Shop, 13 Kingsleigh Road, Heaton Moor, SK4 3QF



Cider Circuit

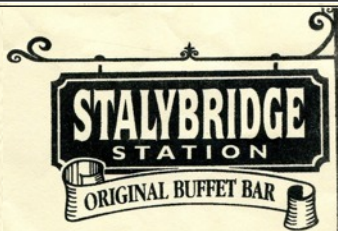
This month we are offering you the chance to win a 36 pint "box" of cider. Kindly donated by John Reek of Merrylegs Cider as we re-run our Cider Circuit. Not only that but it is once again very easy indeed to win a prize. All you have to do is visit one of our participating pubs and buy a pint or a half of traditional cider or perry, and then get the bar staff to put a sticker on the pub's entry on the form below. Get 12 stickers and you will win a large bottle of traditional cider or perry. Get a sticker from all participating pubs and you will not only get a bottle of cider or perry but you will also be entered into the draw for the 36-pint box. We hope to have some other cider and perry prizes, too.

The Cider Circuit runs from Saturday 8 October to Sunday 13 November. Completed forms should be sent to; Cider Circuit, 45 Bulkeley Street, Edgeley, Stockport, Cheshire, SK3 9HD to arrive no later than Saturday 19 November. If you are entering the grand draw, make sure you specify whether you would prefer dry, medium or sweet cider. **Please make sure you include your name, address, telephone no. and email address so we can contact you.** All the prizes will be presented at a special cider afternoon to be held at the Cheshire Ring, Manchester Road, Hyde on Sunday 4 December from 2pm onwards.

New Oxford Bexley Square Salford M3 6DB	Crescent The Crescent Salford M5 4PF	Star 13 High Street Cheadle SK8 1AX	Alexandra 195 Northgate Road Edgeley SK3 9NJ	Olde Woolpack 70 Brinksway Stockport SK3 0BY
Railway Avenue Street Stockport SK1 2BZ	Blossoms 2 Buxton Road Heaviley SK2 6NU	Marble Beer House Manchester Road Chorlton M21 0PW	Elektrik 359 Wilbraham Road Chorlton M21 0AE	Knott 374 Deansgate Manchester M3 4LY
Pi 99 Manchester Road Chorlton M21 9GA	Dulcimer 567 Wilbraham Road Chorlton M21 0AE	Oddest 414 Wilbraham Road Chorlton M21 0SD	Rising Sun 22 Queen Street Manchester M2 5HX	Horse & Jockey 9 Chorlton Green Chorlton M21 9HS
Steam House Station Approach Urmston M41 9SB	Font 7-9 New Wakefield St Manchester M1 5NP	Marble Arch Rochdale Road Manchester M4 4HY	Cheshire Ring Manchester Road Hyde SK14 2BJ	Fletcher Moss 1 William Street Didsbury M20 6RQ
Globe 144 High Street West Glossop SK13 8HJ	Star Howard Street Glossop SK13 7DD	Micro Bar Arndale Market High Street Manchester	Angel 6 Angel Street Manchester M4 4BQ	Sand Bar Grosvenor Street Manchester M1 7HL
Magnet 51 Wellington Road N Stockport SK4 1HJ	Station Buffet Bar Rassbottom Street Stalybridge SK15 1RF	Plough 82 Heaton Moor Road Stockport SK4 4NZ	Swan with two Necks 36 Princes Street Stockport SK1 1RY	Victoria 438 Wilmslow Road Withington M20 3BW
Friendship 353 Wilmslow Road Fallowfield M14 6XS	Waters Green Tavern Waters Green Macclesfield SK11 6LH	Park Tavern 158 Park Lane Macclesfield SK11 6UB	<p>Join CAMRA See page 26</p>	

Name	Tel No.
Address	

One of the few remaining Victorian station buffet bars.



Friendly staff, eight ever changing real ales, draught farm cider, Belgian and other foreign bottled beers.



Old fashioned snacks, coffee & tea by the pot.

Open: Mon-Sat 11am - 11pm, Sun noon - 10.30pm

Stalybridge Station Buffet

www.bufferbar.org

Old Market Tavern



Old Market Place, Altrincham, Cheshire WA14 4DN
0161 927 7062

- 11 Hand Pumps and a Real Cider**
- Foreign and British Beers**
- Free Function Room**
- Free WiFi and Games**
- Good Home Cooked Food**
- Wednesday Quiz 9.30pm with free food**

GREAT BEER & FINE FOOD

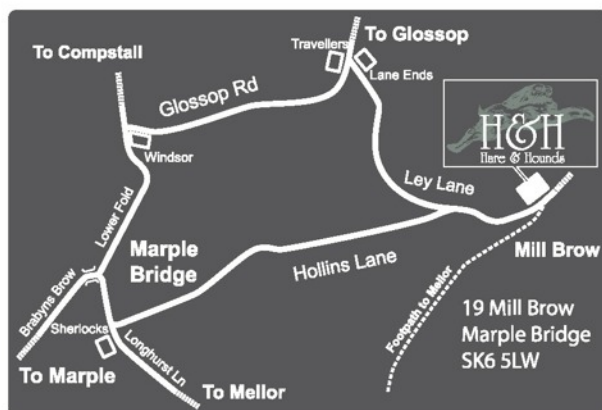
A rare gem of a traditional country pub Award-winning beer and exceptional food

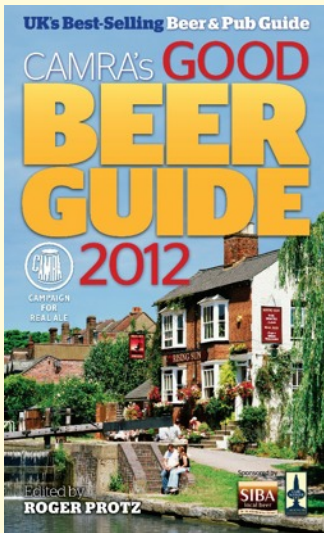


The Hare & Hounds

Reservations - 0161 427 4042

19 Mill Brow, Marple Bridge, SK6 5LW





"The definitive rundown of the best places in the UK to get a pint of real ale, from cosy country inns to upmarket style bars." - Time Out Magazine

The 2012 Good Beer Guide was published on 15 September. This, the 39th edition of the country's best beer and pub guide, features 4,500 of the best pubs in the UK, chosen by CAMRA members from across the country.

The Guide has heralded a 'golden era' for British brewing after new research has found 99 new breweries having opened across the nation over the past 12 months. Radical growth in the sector now takes the total number of breweries

to 840 across Britain!

New growth figures are symbolised by counties such as Cheshire, which in the space of just 12 months has seen 12 new breweries crop up in the area, almost doubling the number of brewers operational (from 14 in 2010, to 26 in 2012). Meanwhile, further expansion in real ale hotspot Yorkshire means there are now a staggering 98 breweries in the region.

Britain's 840 real ale breweries are comprehensively listed in the CAMRA Good Beer Guide 2012. As CAMRA's flagship title, the Guide features over 4,500 urban and rural pubs, giving details of the real ales, food, opening hours, beer gardens, accommodation, transport links, disabled access and family facilities.

The Guide is completely independent, and there is no charge for entry. The Guide is compiled by CAMRA's 130,000 members, who exhaustively update and revise the Guide each year, thereby guaranteeing the reader with the most up to date publication to Britain's best real ale pubs.



Roger Protz, CAMRA Good Beer Guide editor (pictured left), said:

'With astonishing growth in an industry starting downturn in the face at the beginning of the 21st century, there has never been a better time to release a Guide to Britain's best real ale pubs!'

While there continue to be ongoing issues in the pub industry such as high beer taxes, unfair competition from supermarkets, pubs being demolished without planning permission, and problems with the way large pub companies are treating their tenants, we as consumers remain spoilt for choice with a sheer array of quality when deciding where to go for a pint. The Good Beer Guide remains the number-one, independent guide to good beer and pubs, and is the result of a year of surveying by CAMRA's 130,000 members, who work relentlessly to ensure the reader gets the most up to date edition. In CAMRA's 40th year, I'd like to raise a glass to all their hard work in making this Guide such a success.'

Pubs are surveyed by local CAMRA members and scored on a variety of aspects that make a great pub. These include customer service, the clientele mix (i.e. the pub appeals to 18 and 80 year olds), value for money, décor and of course the quality of the real ale. CAMRA members therefore guarantee to supply the reader with the most up to date publication to help locate the best pint of real ale.

You can keep your copy of the Good Beer Guide up to date by visiting the CAMRA website (www.camra.org.uk). Click on "Good Beer Guide" then "Updates to the GBG 2012".

Copies of the Good Beer Guide can be obtained from Jim Flynn at a price of £15.99 (includes p&p). Please send a cheque payable to "CAMRA Stockport & South Manchester" to 66 Downham Road, Heaton Chapel, Stockport, SK4 5EG.

Bar Fringe

Swan St, Manchester
0161 835 3815



Five ever changing cask ales plus traditional cider. A range of Belgian and German draught and bottles.
In the Good Beer Guide for untold consecutive years
Come along Sample and Enjoy

Mark & Claire Welcome you to

The Junction Inn



Home of the Rhino Fishing Club

A Traditional Pub in the heart of the valley as seen in 2011 Good Beer Guide
Selection of Robinsons Cask Ales Available

NUTS POKER LEAGUE (as seen on Dragons Den) every Tuesday from 8pm. New Players Welcome.

Traditional Home Cooked Menu Available Using Only The Finest In Fresh, Locally Sourced Produce

Parties tastefully catered for (including Christenings, Bereavements, etc)

Ramblers, Bikers, Cyclists & Dog Walkers Welcome

Opening Times:

Monday & Tuesday: 5pm - 12am
Wednesday to Sunday: 12pm - 12am

Food Opening Times:

Wednesday: 12pm - 2.30pm
Thursday: 12pm - 2.30pm and 6pm - 8pm
Friday: 12pm - 2.30pm and 6pm - 8pm
Sunday: 1pm - 5pm



Mossley Road, Ashton Under Lyne, OL6 9BX

Tel: 0161 343 1822

www.junctioninn.com

Large Car park Available

the

THE SOCIETY OF INDEPENDENT BREWERS PRESENTS

GREAT NORTHERN BEER FESTIVAL

In Association with Greater Manchester CAMRA

27 – 29 OCTOBER 2011

RAMADA PICCADILLY
MANCHESTER CITY CENTRE

DOORS OPEN THURSDAY 4PM – 10.30PM FOLLOWING
THE SIBA NORTH REGION BEER COMPETITION 2011
FRIDAY & SATURDAY, NOON – 10.30PM

***250* cask & 100
bottled beers all
Northern and wi'
a proper 'ead!***

YOUR PRESENCE IS REQUESTED WITH
DR BUTLER'S HATSTAND MEDICINE
BAND ON SATURDAY EVENING.

ONLY £3 ENTRY INCLUDING £1 REFUNDABLE
DEPOSIT ON A SOUVENIR GLASS

Concessions apply

*Served through 64 handpulls



www.siba.co.uk/gnbf



The Rising Sun

22 Queen Street Manchester

5 cask ales + 1 real cider

Traditional pub

Cask Marque accredited



SIBA



Food served 12 - 2.30pm Mon - Fri

The Good Beer Guide we're in it!



“A real ale haven”

“Best beer festival I’ve ever been to, and I’ve been to many in my time!”

“welcoming, good food, good local ale...everything an Inn should be!”

“great excuse to visit the Peak District..”

www.old-hall-inn.co.uk

Whitehough, Chinley, SK23 6EJ. 01663 750529 (5mins walk from Chinley Train Station)

THE ARMOURY

SHAW HEATH, STOCKPORT TEL: 0161 477 3711



**WARM FRIENDLY WELCOME
ROBINSON'S HATTERS, UNICORN
DIZZY BLONDE AND SEASONAL
BEER GARDEN - LIVE SPORT**

**FOOD AVAILABLE MON TO FRI NOON - 4PM
ROOM AVAILABLE FOR SMALL FUNCTIONS
SUNDAY - THURSDAY 11AM - MIDNIGHT
FRIDAY - SATURDAY 11AM - 1.00AM**

Stella and Tom Welcome You to *The Lantern Pike Inn*

45 Glossop Road, Little Hayfield, High Peak, SK22 2NG

*Taylor's Landlord, Whim Hartington Bitter,
Howard Town Wren's Nest*

Great Food

Lunch Tuesday to Friday: Noon - 2:30pm

Dinner Tuesday to Friday: 5pm - 8:30pm

Saturdays and Sundays: Noon - 8:30pm

Accommodation

www.lanternpikeinn.co.uk



Tony Welcomes You to

The Hatters Arms

Church Lane, Marple, 0161 427 1529

*Draught Robinson's Hatters,
Unicorn & Seasonal
Budvar (Czech) in Bottles*



Beer Garden

Lunches 12 - 2



Quiz night Thursday from 9pm

We would like to
Welcome you to
The new look



the Shady Oak

Redford Drive, Bramhall



Where we hope you can enjoy our extensive range of
ever changing fine cask ale and good food

Our NEW home cooked menu is now available,
Plus an ever changing specials menu

Tuesday - Friday 12 - 2 and 5 - 8

Saturday - Sunday 12 - 8

Bank Holidays 12 - 8

Sunday Lunches are available

Pensioners' Special

Tues - Weds - Thursday Lunchtime
2 course meal £3.95

Children's menu available £3.95

Gavin & Amy welcome you to

The Dysart's Arms - Mossley

Traditional country pub

Three Robinson's cask ales

Selection of lagers

Quiz night every Thursday

Food now being served

Find us in The Good Beer Guide

Phone 01457 832103 for
directions & information



Cock & Pheasant at Bollington

There is always a warm welcome,
good food and fine cask ales.

15 Bollington Road, Bollington Cross,
Macclesfield SK10 5EJ
Tel. 01625 573289

DAVENPORT ARMS (THIEF'S NECK) Woodford



GOOD BEER GUIDE 1988 - 2012
25th GLORIOUS YEAR

IN THE SAME FAMILY FOR 79 YEARS

Season's Greetings to Customers Old & New
From Yvonne & Staff
Robinson's Traditional Draught Beers

Stockport October Beer Festival



21st -22nd October 2011

Friday 1700 - 2300 Saturday 1200 - 2300

Stockport Guild Hall,
169 Wellington Road South
Stockport
SK1 3UA

local real ales, quality ciders
and fine wines

This voucher entitles the bearer to
£1 discount on entrance

This voucher cannot be used with any other offer

www.fancybeermate.com

ot



Bar Humbug

"We may have lost a lot of pubs," the argument goes, "but plenty of new bars have sprung up in their place." However, the reality is that it's not remotely a like-for-like exchange.

For a start, the bars aren't opening in the places where pubs have closed. In fact, they're very much concentrated in middle-class urban enclaves. There may be a cluster in Chorlton, but they're not spread evenly across the board. In recent years, the large Cheshire village of Helsby has lost two of its four pubs. Are there any new bars to replace them? What do you think? It's not much use if you have to go eight miles down the road to Chester to find one.

Most of these new bars are targeted at the younger end of the market and have little to offer the more mature pubgoer. They don't have the across-the-board appeal of proper pubs. And, although there are some honourable exceptions, most offer nothing of interest on the beer front. What is more, how can a small, boxy converted shop be regarded as any kind of acceptable substitute for an impressive Victorian or inter-wars building that was full of character and had served its community over several generations through a succession of licensees? Most will be fly-by-night operations with a limited lifespan and no continuity.

Realistically, the idea that the growth of new bars offers any kind of adequate replacement for closed pubs, except in very limited circumstances, is absurd. Chorlton is not representative of the rest of the world, and is very much the exception.

Supermarket Sweep

I remember on CAMRA trips many years ago a song being sung with the refrain "The brewery tap's a supermarket now." And in recent years that has proved all too prophetic, with a number of pubs in the local area closed and replaced with the likes of Tesco Express. This may be a cause for regret, but in reality it is a symptom of the decline of the pub trade, not a cause.

If you want to bulldoze the existing building and replace it, it requires planning permission, but if you want to create a supermarket in a former pub it doesn't. But refusal of planning permission won't guarantee the survival of a pub if there isn't sufficient trade. Many local residents are likely to actively prefer a small supermarket to a scruffy, run-down pub that is a frequent source of late-night noise and fights, and councillors will inevitably listen to their views. If these pubs were thriving community hubs, then nobody would be looking to close them down and turn them into something else. But, sadly, they're not.

It has also been suggested that local communities should be given the right to buy up closed pubs and run them themselves. This may work in close-knit villages in the Lake District, but it's unlikely to be of much interest to the neighbours of large urban pubs like the Four Heatons or the Southern Hotel. The most likely result if some kind of "cooling off period" is introduced for people to try to raise the money to buy them is pubs remaining closed and blighted for months with no realistic prospect of ever coming back to life. In general, local communities are more likely to want developers to get on with it and build a block of flats or a supermarket as soon as possible.

No amount of tinkering with planning regulations will save pubs in any significant numbers if the underlying demand isn't there in the first place. If you are really concerned for the future of pubs, you need to look at the underlying reasons why people have stopped visiting them.

Curmudgeon Online: www.curmudgeoncolumns.blogspot.com

(comments on these articles can be left on the website)

The Railway

Avenue Street, Portwood, Stockport



15 handpumps serving beers from Pen-
nine Outstanding and
Moorhouses plus Pictish Brewers Gold
at all times

Changing guest mild and three additional
guest beers at weekend

Changing guest cider

Large range of foreign bottled beers

Open 12-11 Monday to Saturday; 12-
10.30 Sundays

The White Lion



Disley



High Peak & NE Cheshire Pub of the Year

Mini Beer Festival

22nd - 29th October

Live music last Saturday each month

Pub Food 12-9pm (8pm Sun)

Sunday Lunch only £4.40

Quiz every Thursday

199 bus from Stockport stops outside the door & from Buxton across the road

135 Buxton Road, Disley, SK12 2HA

Tel. 01663 - 762800



PHOENIX BREWERY

GREEN LANE, HEYWOOD, OL10 2EP TEL. 01706 627009

Best Bitter, Old Oak, Navy, Double Dagger, Monkeytown Mild, Arizona, White Monk, Pale Moonlight, Midsummer Madness, Bantam, White Monk, Black Shadow, March Hare, May Fly, Sticky Wicket, Double Gold, Flash Flood, Black Bee, White Tornado, Last Leaf, Massacre, Porter, Snowbound, Wobbly Bob, White Hurricane, Uncle Fester, Christmas Kiss, Humbug, Tyke, Thirsty Moon

MORE CHOICE BETTER BEER

International Brewing Awards



1998

Wobbly Bob



2002

Navy



2002

Wobbly Bob



2004

Wobbly Bob

The Cheshire Ring

Manchester Road, Hyde



Beartown Ales and Changing Guest Ales on handpump

Real Cider also on handpump

CAMRA Regional Cider Pub of the Year 2010

Thursday is Curry Night from 4pm

Curry, rice, naan and a pint for just £6

Return of The Aleoween Beer Fest

28th to 30th October

Around 30 beers over the weekend

Food will be available

Open Monday & Tuesday - 4pm till Close

Wednesday - 1pm till Close

Thursday & Friday 3:30pm till Close

Saturday & Sunday Noon till Close

The Cheshire Ring

Manchester Road, Hyde

Live Music at The Verge

Fri 7th Oct - Peter Bruntnell £7

Thurs 13th Oct - Marisa Yeaman £5

Fri 14th Oct - Toy Hearts £8

Sat 15th Oct - Vic Godard and the Subway Sect £7

Fri 21st Oct - Dan Melrose £5

Fri 22nd Oct - Mik Artistik £7

Fri Oct 28th - Jon Gomm £5

Sat 29th Oct - The Jerzey Street Band £5

Sun Oct 30th - Groanbox £7

Fri 4th Nov - Edgar Broughton (solo) £10

Sat 12th Nov - Jason Johnson £5

Fri 18th Nov - Ian McNabb (Icicle Works frontman) £10 adv

Sat 19th Nov - Ragin Cajuns £5

Brewery News

Robbies Set for Take-off

Multi-platinum selling Manchester band elbow designed their 'build a rocket boys!' beer after a series of tastings at Robinsons Brewery, a stone's throw from elbow's Manchester heartland.

John Robinson, Brand Manager at Robinsons Brewery told

Opening Times: "We are delighted to partner elbow - not only do they genuinely enjoy a good pint of cask ale, but it's also a perfect way to introduce their fans to the delights of drinking cask."

Band members sampled a range of Robinsons' ales to shortlist their preferred style of beer, taste and colour before deciding on a golden ale with a rich rounded body, smooth bitterness, subtle tang of malt and fruity aroma. elbow's ale will be a golden premium session bitter at 4.0% ABV, available in cask and bottle.

After a hectic 2011, which has seen the band complete their biggest arena tour to date including sell out shows at Manchester's MEN and London's O2 Arenas, plus numerous festivals across the world, elbow are looking forward to pulling the first pint of 'build a rocket boys!'.

The official launch of 'build a rocket boys!' beer is at the Manchester Food & Drink Festival in October. The beer also has its own website at www.elbowbeer.co.uk where there is a countdown to the launch and a list of stockists.

Hydes Latest

Hydes Brewery has launched the penultimate of its 2011 craft ales - Thirst Aid - specially brewed for the start of Autumn. Thirst Aid is described as a classic Autumnal style beer that's rich chestnut in colour. Created from Tipple and Cara malts, "this fine beer is mellow and superbly balanced and is sure to rescue the taste buds".

David Safiruddin, Marketing Director at Hydes commented: "As we move towards the end of the year with our final two beers, the flavours take a warmer, fuller tone in keeping with the cooler weather and associated customer tastes."



Micro Magic

As ever there's lots to report from our local micro brewers, where collaboration seems to be the name of the game at the moment.

At **Marble Brewery**, head brewer James Campbell played host to Mark Tranter, head brewer of the well regarded Dark Star Brewery from Brighton. The product of this collaboration is a Belgian-style saison at 9% ABV. The Belgian yeast has been complemented with a large slug of New World hops and promises to be a treat.

Back in June we reported on another Marble collaboration, this time with John Keeling from Fullers. The product of this is the 7% Old Manchester, a beer based on Tawny 5 but at a higher strength and again a big hop addition. As this was typed the beer was due to be launched at the Borefts Beer Festival held at the De Molen Brewery in the Netherlands.

Also in collaborative mode is Jay Krause of Stockport's **Shaw's Brewery**, who on 17 September welcomed the crew from London's Brodies Brewery. The beer they brewed will be a New Zealand Pale Ale (at about 4% ABV) with Super Alpha hops used for bittering with Motueka, Nelson Sauvignon and Super Alpha used for aroma. Pictured below (l-r) are Jay from Shaws and the Brodies crew - Jonathan Queally, Eric Lanouilh and James Brodie.



Also coming up from Shaws (under the Quantum label) at a 5% Nut Brown Ale (but a notably hoppy interpretation of the style with Northdown, First Gold, Summit and Nelson Sauvignon hops all used in the brew), plus two single hop IPAs - Nelson Sauvignon and East Kent Goldings, both at 5.5% ABV.

Meanwhile Toby McKenzie at **Redwillow Brewery** played host to the team from Manchester's Port Street Beer House. The result of this venture is a 7.9% Nelson Sauvignon-hopped "Hopfen Weisse" wheat beer. This will be sold as Faithless VII while Faithless VI is another wheat beer, this time at 4.6% and infused with Thai herbs. Also look out for Faithless V, a pale ale using Galaxy hops and Fathomless, an oyster stout at 5.2% and brewed with 250 oysters added to the boil.

Redwillow has also started picking up awards. Smokeless won a bronze in the new brewery category at Peterborough Beer Festival, while Wreckless was the fastest selling beer at the

Altrincham Bottle & Cask Festival. The brewery also won the competition to supply the Mark Addy pub with a house beer for the next 12 months.

Denton's Hornbeam Brewery

has expanded the range at the brewery shop and now sells bottled beers from Tatton and Bank Top breweries. New beers out soon will be a bottled-only



lager at 5.1%. This has been devised by visiting German brewer David Lauer and has been brewed using Munich malt, making it a little darker than many lagers. Hops are Magnum and Saaz. Out in cask is Lavender Wheat (4.6%) brewed using pale lager malt but with 50% of the grist being wheat malt. It's hopped with Mount Hood and Galena. Also included is a small quantity of dried lavender flowers which add an enticing spiciness which enhances but doesn't overwhelm the beer. Try it if you find it - and don't be put off by the name!

Bollington's **Happy Valley** brewery celebrates its first birthday this month and now has six regular beers in its portfolio. Dave Hughes' wife Nicola is now involved in the brewing process, too. Happy Valley is also celebrating its excellent Black Magic getting through to the finals of the Champion Beer of Cheshire competition.

Happy Valley's near neighbour **Bollington Brewery** is also having a good year. Look out for Microbe Brew a new beer for the Manchester Science Festival which fits in nicely for us with the brewery's science connections. The SciBar is now in its 3rd year at the Vale and is on the second Monday of the month, but a new SciBar will be starting at the Park in the near future, probably on the third Monday of the month and with different topics and speakers. The beer for the Science festival will be available in various venues around Manchester and will be a dark golden colour brewed with Pioneer hops!!

Chorlton's **Bootleg Brewery** is brewing a new session ale to become the resident beer at the Horse & Jockey pub where the brewery is based. Local CAMRA members were recently invited to sample and rate three variants of the new beer with differing hop regimes based around First Gold or Challenger hops for bitterness with Pacific Gem and Green Bullet hops for aroma. Opening Times hopes to bring news of the final beer in next month's issue.

Phoenix Brewery has a range of autumnal seasonals out this month - beers include Uncle Fester, Spooky Brew, Fire Cracker, Skellington and Rip Rap, one of OT's all time favourite Phoenix beers. Lovely stuff!

THE RISING SUN

GENUINE FREE HOUSE



KEEP IT REAL, KEEP IT LOCAL, OPENING 12PM 'TIL 12AM 7 DAYS A WEEK
3 REGULAR ALES, 7 EVER CHANGING GUEST BEERS(10 HAND PUMPS)
WORLD BEERS, SCRUMPTIOUS CIDERS AND FABULOUS WINES ,SPIRITS.
ROARING FIRES STUNNING VIEWS AND FRIENDLY FOLK

WWW.RISINGSUNMOSSLEY.CO.UK

Millstone Mossley, Hornbeam Denton, The Nook
Holmfirth, Howard Town Glossop,, Pheonix Middleton
Manchester Bitter Marble Brewery 150 breweries
since October 2010

Tel 01457 -238 -236

CAMRA AWARD WINNING
ALES ALL BREWED LOCAL
AND ON YOUR DOOR STEP



THE Trafford & Hulme CAMRA Pub Of The Season for Autumn 2011 is The Waterhouse on Princess Street in Manchester City Centre. The pub, owned by the JD Wetherspoon company, has built up an enviable reputation for both the quality and range of its cask ales under manager Sarah Barker. Alongside the regular Wetherspoons offerings of Ruddles Bitter and Abbot Ale, the pub is one of a few to serve Phoenix Wobbly Bob permanently, alongside a further six guest ales which often rotate daily. The pub has its own regular ales in Waterhouse IPA brewed by West Yorkshire's Elland Brewery with a second Waterhouse Pale brewed in Staveley, Cumbria by Hawkshead brewery.



The bedrock of the pub's real ale range was built on the passion and dedication of former shift manager and cellarman Kevin Muldoon who after first ensuring all the pub's ales were of the highest quality, then began searching out the very best new breweries to showcase in the pub including featuring beers from the then fledgling Thornbridge brewery. Although Kevin has now moved on to Wetherspoon's Seven Stars in the Printworks, before he ensured that he had instilled the same enthusiasm and commitment in his fellow shift managers and has left the pub cellar in the very capable hands of Tom and Adam.

As well as continuing to order in a varied selection of both breweries and styles and keep them in tip-top condition, Adam has continued with the series of "Meet The Brewer" events first introduced by his predecessor. Recently, Macclesfield's Redwillow brewery visited the pub where enthusiastic drinkers packed a side room of the pub to bursting point to listen to a talk from owner and brewer Toby McKenzie.

The pub is often commented on for being "not like a Wetherspoons". While many of the group's pubs tend to be large open plan areas, the Waterhouse, named after the architect of Manchester Town Hall which stand opposite, is broken up into many smaller rooms with a handful of tables in each. The usual Wetherspoons menu is served from breakfast at 8am until 10pm at night, with the pub closing at midnight seven days a week. The pub's award is to be presented on Tuesday 1st November at 8.30pm.

Photo by Andy Jenkinson

Didsbury Beer Festival 2011

Didsbury Beer Festival is now in its fourth year and going from strength to strength. The concept of the festival, run at St. Catherine's Social Club in Didsbury, was that of CAMRA members Jeff Seneviratne and Phil Saunders who head up the festival organisation team and beer selection for the event.

This year again sees an emphasis on beers from small breweries in and around Greater Manchester but also with a good selection from further afield. In addition there will be a good range of Cider and Perries, food and entertainment. Although this is not a CAMRA event there will be CAMRA volunteers involved and a membership stall where almost 30 new members signed up last year. For more information look out for the DBF advert in this issue of OT or visit the festival website: www.didsburybeerfestival.org.uk

Coming Soon

THE twin cities of Manchester & Salford are the vibrant heart of a region with a population of 3 million and attracts 90 million visitors a year for leisure, tourism, sport and business. Like the city itself, the city's pubs and bars are a mix of the modern and the traditional with something for everyone.

With over 200 pubs and bars in the city centre ranging from the historic to the new bohemian bars of the Northern Quarter, the visitor can be bewildered about where to go for a pint.

The three CAMRA branches that cover the City of Manchester have come together to produce a guide to the pubs and bars of the City Centre. The guide splits the city centre into seven areas with the name & address of every pub and bar listed. Clear maps in each section show the location of each pub & bar. Over 100 pubs selling real ale are described in detail along with opening times and icons showing the facilities available. Each pub or bar's location is shown on clear maps.

For the more adventurous visitor, additional sections cover the popular suburb of Chorlton, where over 20 pubs and bars squeezed into less than half a square mile have made it a destination in itself, and the Wilmslow Road corridor home to two universities and the bulk of their 80,000 strong student population.

The pub listings are complemented by a range of feature articles on the city's history, local breweries and other subjects of interest to pub-goers. Whether coming to the city for its pubs and ales or just looking for somewhere to relax between museums or meetings, the guide will help visitors plan their visit and seek out the very best the city has to offer.

The Manchester Pub Guide is due to be launched to coincide with the SIBA Great Northern Beer Festival. The full colour, 112 page will have a cover price of £4.99. For orders and enquiries contact Heather Airlie at pubguide@thcamra.org.uk



Great Northern Beer Festival

FOR the second year running the northern region of SIBA will be staging its Great Northern Beer Festival in Manchester. There's a new venue this year – the Ramada Piccadilly hotel, slap bang in the heart of the City Centre.

The focus of the event will be SIBA's regional beer competition with breweries from across the north entering their beers into numerous categories for both cask and bottled beer. In total there will be 250 cask and 100 bottled beers. There will be 64 cask beers available at any one time, all on handpull and with each beer served into a fresh glass. As last year the bars will be set up and run by the Greater Manchester branches of CAMRA on behalf of SIBA.

The cost of entry will be just £3 and this will include a £1 refundable deposit on the souvenir glass. There will be a reduction for CAMRA members. The doors open at 4pm on Thursday 27 October (after the competition judging has been concluded) until 10.30pm, and on Friday 20 and Saturday 29 from noon until 10.30pm. Check out the advert on page 18 or visit the website at www.siba.co.uk/gnbf.



A Campaign

of Two Halves

Fair deal on beer tax now!

Save Britain's Pubs!



Join CAMRA Today

Complete the Direct Debit form below and you will receive 15 months membership for the price of 12 and a fantastic discount on your membership subscription.

Alternatively you can send a cheque payable to CAMRA Ltd with your completed form, visit www.camra.org.uk/joinus or call 01727 867201. All forms should be addressed to Membership Department, CAMRA, 230 Hatfield Road, St Albans, AL1 4LW.

Your Details

Title _____ Surname _____
 Forename(s) _____
 Date of Birth (dd/mm/yyyy) _____
 Address _____

 _____ Postcode _____
 Email address _____
 Tel No(s) _____

Partner's Details (if Joint Membership)

Title _____ Surname _____
 Forename(s) _____
 Date of Birth (dd/mm/yyyy) _____

	Direct Debit	Non DD
Single Membership (UK & EU)	£20 <input type="checkbox"/>	£22 <input type="checkbox"/>
Joint Membership (Partner at the same address)	£25 <input type="checkbox"/>	£27 <input type="checkbox"/>

For Young Member and concessionary rates please visit www.camra.org.uk or call 01727 867201.

I wish to join the Campaign for Real Ale, and agree to abide by the Memorandum and Articles of Association

I enclose a cheque for _____

Signed _____ Date _____

Applications will be processed within 21 days

12/10

Campaigning for Pub Goers & Beer Drinkers

Enjoying Real Ale & Pubs

Join CAMRA today – www.camra.org.uk/joinus



Instruction to your Bank or Building Society to pay by Direct Debit

Please fill in the whole form using a ball point pen and send to: Campaign for Real Ale Ltd, 230 Hatfield Road, St. Albans, Herts AL1 4LW



Name and full postal address of your Bank or Building Society Service User Number

To the Manager _____ Bank or Building Society
 Address _____

 _____ Postcode _____

9 2 6 1 2 9

FOR CAMRA OFFICIAL USE ONLY

This is not part of the instruction to your Bank or Building Society

Membership Number _____
 Name _____
 Postcode _____

Instructions to your Bank or Building Society

Please pay Campaign for Real Ale Limited Direct Debits from the account detailed on this instruction subject to the safeguards assured by the Direct Debit Guarantee. I understand that this instruction may remain with Campaign for Real Ale Limited and, if so will be passed electronically to my Bank/Building Society,

Signature(s) _____

Date _____

This Guarantee should be detached and retained by the payer.

The Direct Debit Guarantee

- This Guarantee is offered by all banks and building societies that accept instructions to pay by Direct Debits.
- If there are any changes to the amount, date or frequency of your Direct Debit The Campaign for Real Ale Ltd will notify you 10 working days in advance of your account being debited or as otherwise agreed. If you request The Campaign for Real Ale Ltd to collect a payment, confirmation of the amount and date will be given to you at the time of the request.
- If an error is made in the payment of your Direct Debit by The Campaign for Real Ale Ltd or your bank or building society, you are entitled to a full and immediate refund of the amount paid from your bank or building society.
 - If you receive a refund you are not entitled to, you must pay it back when The Campaign for Real Ale Ltd asks you to.
- You can cancel a Direct Debit at any time by simply contacting your bank or building society. Written confirmation may be required. Please also notify us.

Ye Olde Woolpack

70 Brinksway, Stockport, SK3 0BY 0161 474 1212



ASK FOR A FREE TASTE OF OUR CIDERS

16 TRADITIONAL CIDERS
2 PERRIES
7 EVER CHANGING CASK ALES

FRIDAY NIGHT KARAOKE
LIVE BAND
SATURDAY

LUNCH 12 TILL 4
WEEKDAYS & SUNDAY
£4.95

FRESH IN EVERY
FRIDAY FROM THE FARM
IN SCOTLAND

VENISON BURGERS & PIES
STEAK BURGERS & PIES
CHICKEN, PORK
COME ALONG & TRY THEM

NATURAL CIDER COMPANY

CALLING PUB AND CLUB LANDLORDS & LANDLADIES
WANTING NATURAL CIDER FOR THE BAR?

WE STOCK
BROADOAK - BAG IN BOX, BOTTLE, KEG
GWYNT Y DDRAIG - BAG IN BOX, BOTTLE
20 CIDERS AND PERRIES
12 VARIETIES

CONTACT MIKE ON
0161 474 1212
OR 0790 242270

The Award Winning **NEW OXFORD**

*A warm welcome awaits you at this
2010 Good Beer Guide listed pub*

*7 Belgian & 4 German beers
on draught at all times*
Plus up to 16 Guest Ales
Two Guest Ciders
120 Belgian Bottled Beers

Food 12 - 4pm Monday to Saturday
Open 12 noon - 12 midnight

www.thenewoxford.co.uk
11 Bexley Square, Salford
(just off Chapel St)
Tel 0161 832 7082



Hornbeam Brewery is an award winning Manchester based, craft micro-brewery producing distinctive high quality beers, full of flavour and character. We deliver throughout the Northwest and have a superb range of core beers and regularly changing monthly beers.

25% OFF
FIRST ORDER

Award Winning cask Ales
Home Bars

A favourite at the bar !



Hornbeam Brewery, Unit 1-1C Grey Street, Denton M34 3RU
Tel 0161 320 5627 Mobile 07984 44 33 83
E Mail: kevin@hornbeambrewery.com

build a rocket boys!

a beer created by

— elbow —



www.elbowbeer.co.uk

brewed by Robinsons